

**INSTRUMENT APPROACH CHART (IAC)**

**ALTA FLORESTA / Aeroporto Piloto Osvaldo Marques Dias (SBAT)**

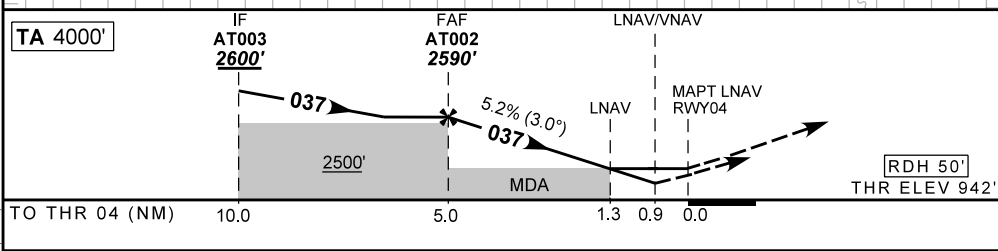
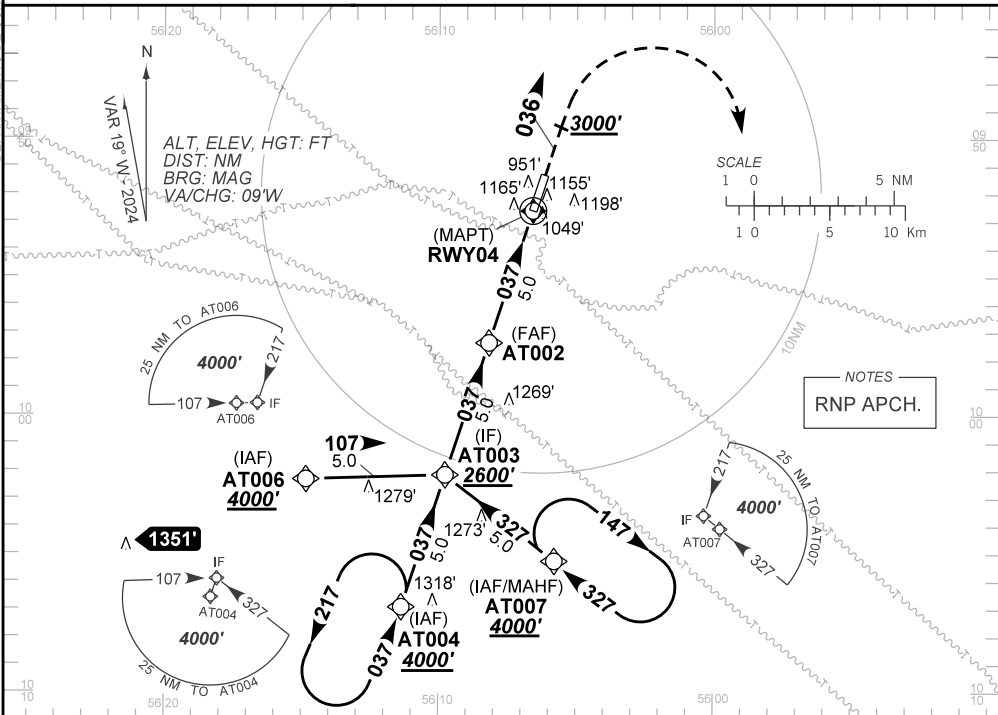
**AD ELEV: 948'**

**RNP RWY 04**

ATIS <b>NIL</b>	APP <b>NIL</b>	AFIS FLORESTA <b>126.60</b>	GNDC <b>NIL</b>
TEMP LNAV/VNAV <b>MIN 0°C / MAX 50°C</b>	FINAL CRS <b>037°</b>	FAF: <b>2590'</b>	LNAV/VNAV <b>DA / (OCH): 1274' / (332')</b>
		LNAV <b>MDA / (OCH): 1410' / (470')</b>	

APCH Perdida: Subir para **4000'**. Manter rumo **036** até **3000'**. Após, curvar à DIREITA direto AT007 para espera.  
Missed APCH: Climb to **4000'**. Maintain course **036** until **3000'**. After, turn RIGHT direct AT007 for holding.

DEPARTAMENTO DE CONTROLE DO ESPAÇO AÉREO



	AT002	4.0	3.0	2.0	1.3	RWY04	Ground Speed (KT)	090	110	130	150	170	190
	2590	2266	1947	1629	1410	ALT	FPM	500	600	700	800	900	NA
	1648	1324	1005	687	470	(HGT)	FAF-MAPT	NIL					

STRAIGHT-IN	CAT	A	B	C	D	E
	DA / (OCH)	1274' / (332')				NA
LNAV/VNAV	ALS/NO ALS/ RVR ALS (m)	NIL / 1500 / NIL				
	MDA / (OCH)	1410' / (470')				
LNAV	ALS/NO ALS/ RVR ALS (m)	NIL / 1600 / NIL		NIL / 2200 / NIL		
	MDA / (OCH)	NA				
CIRCLING	MDA / (OCH)	NA				
	VIS (m)	NA				

CHANGES: DA, HDG, LAYOUT, OBST, OCH, THR, VAR.