

**INSTRUMENT APPROACH
CHART (IAC)**

NATAL / Augusto Severo, MIL (SBNT)

AD ELEV: 171'

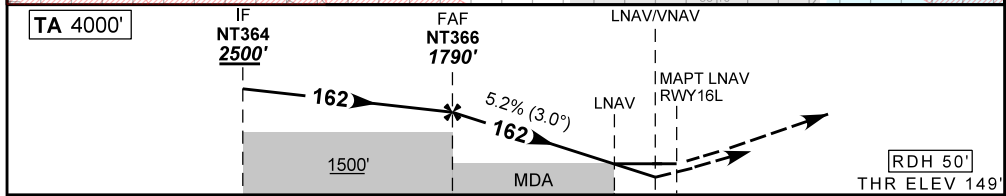
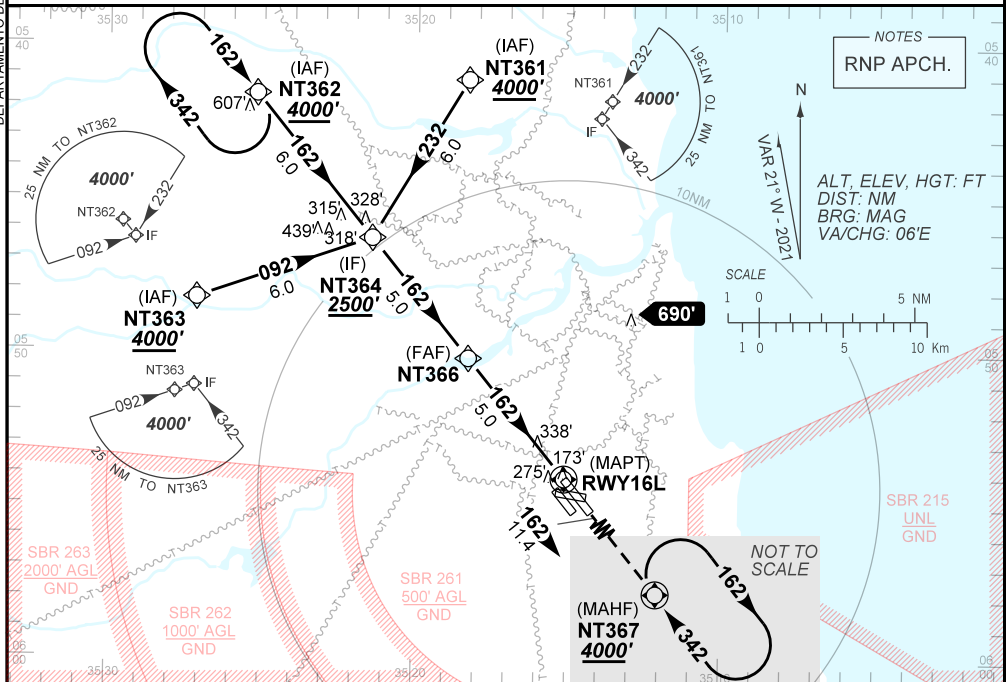
RNP RWY 16L

D-ATIS 132.65	APP NATAL 119.30 119.65 120.65 129.80	TWR NATAL 118.70 122.80	GNDC NATAL 121.90
-------------------------	---	-----------------------------------	-----------------------------

TEMP LNAV/VNAV MIN 0°C / MAX 50°C	FINAL CRS 162°	FAF: 1790'	LNAV/VNAV DA / (OCH): 520' / (371')	LNAV MDA / (OCH): 600' / (450')
---	--------------------------	----------------------	---	---

APCH Perdida: Subir para **4000'**. Manter rumo **162** até NT367 para espera.
Missed APCH: Climb to **4000'**. Maintain course **162** to NT367 for holding.

RMK: NIL.



TO THR 16L (NM) 10.0 5.0 1.3 1.0 0.0

NT366	4.0	3.0	2.0	1.3	1.0	RWY 16	Ground Speed (KT)	090	110	130	150	170	190
1790	1473	1154	836	600	520	ALT	FPM	500	600	700	800	900	1000
1641	1324	1005	687	450	371	(HGT)	FAF-MAPT	NIL					

STRAIGHT-IN	CAT	A	B	C	D	E
	DA / (OCH)	520' / (371')				NA
LNAV/VNAV	ALS/NO ALS/ RVR ALS (m)	NIL / 1700 / NIL				NA
	MDA / (OCH)	600' / (450')				
LNAV	ALS/NO ALS/ RVR ALS (m)	NIL / 1700 / NIL		NIL / 2100 / NIL		
	MDA / (OCH)	NA				
CIRCLING	MDA / (OCH)	NA				
	VIS (m)	NA				

AIRAC AMDT 2107A1 15 JUL 21

SBNT_IAC_00Q 1/1
IAC RNP RWY 16L

DEPARTAMENTO DE CONTROLE DO ESPAÇO AEREO

CHANGES: FREQ. LAYOUT. VAR.