

STANDARD DEPARTURE CHART
INSTRUMENT (SID)

AD ELEV: 1805'

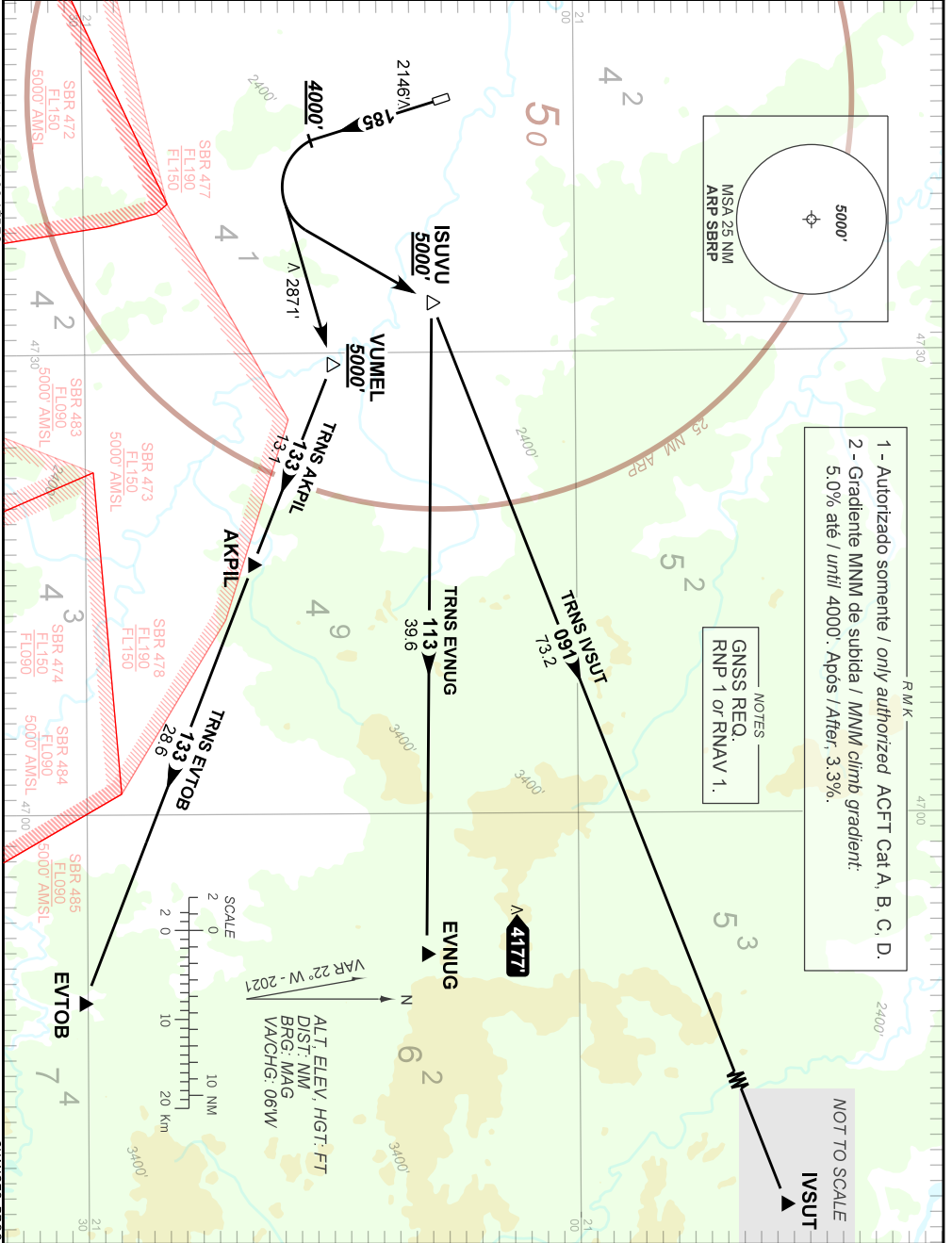
RIBEIRÃO PRETO / Leite Lopes (SBRP)
RWY 18

RNAV ISUVU 1A - VUMEL 1A

| | | | | | |
|----------|--------------|---------------------|--------------------|---|--|
| TA 7000' | ATIS 127.425 | TWR RIBEIRÃO 118.00 | APP UBERABA 120.80 | APP ACADEMIA 119.55 119.75 120.10 134.70 120.40 122.40 | ACC BRASÍLIA 123.35 134.00 128.05 135.15 124.20 126.45 124.80 |
|----------|--------------|---------------------|--------------------|---|--|

DEPARTAMENTO DE CONTROLE DO ESPAÇO AEREO

CHANGES PROC.



1 - Autorizado somente / only authorized ACFT Cat A, B, C, D.
2 - Gradiente MNM de subida / MNM climb gradient: 5,0% até / until 4000'. Após / After, 3,3%.

NOTES
GNSS REQ.
RNP 1 or RNAV 1.

NOT TO SCALE
INSUT

ALT, ELEV, HGT: FT
DIST: NM
BRG: MAG
VA/CHG: 06W

