

INSTRUMENT APPROACH
CHART (IAC)

USO EXCLUSIVO ACFT MILITARES
MILITARY ACFT ONLY

VILHENA / Vilhena (SBVH)

AD ELEV: 2018'

PAR RWY 03

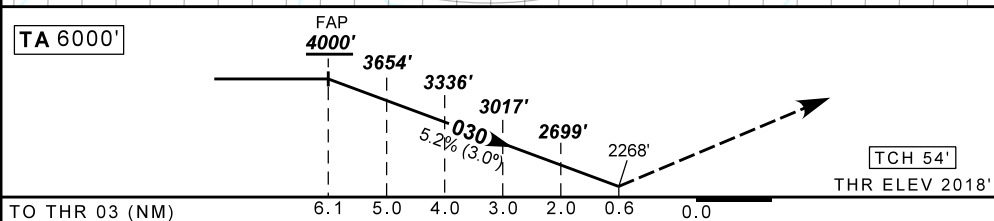
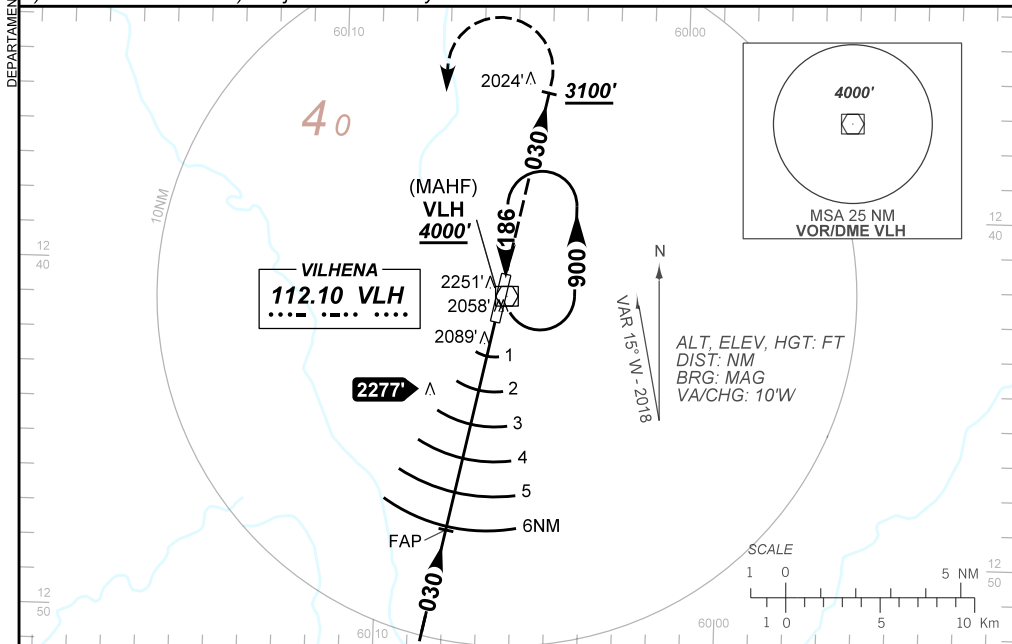
ATIS NIL	APP VILHENA 118.05 130.10	AFIS VILHENA 125.90	PAR VILHENA 122.025 345.125	GNDC NIL
N/A	FINAL CRS 030°	FAP 4000'	PAR DA / (OCH): 2268' (260')	N/A

APCH Perdida: Subir **4000'**. Manter a proa **030** até **3100'**. Após, curvar à ESQUERDA direto VOR Vilhena para espera.

Missed APCH: Climb **4000'**. Maintain heading **030** until **3100'**. Then, turn LEFT direct Vilhena VOR for holding.

RMK: 1) Altitude de início 4000'. 2) Sujeito a disponibilidade do controle PAR.

1) Initial altitude 4000'. 2) Subject to availability of PAR control.



NIL	RWY03	KT	090	110	130	150	170	190
NIL	ALT	FPM	500	600	700	800	900	1000
NIL	(HGT)	FAF-MAPT	NA					

STRAIGHT-IN	CAT	A	B	C	D	E
PAR	DA / (OCH)	2268' / (260')				
	ALS/NO ALS/ RVR ALS (m)	NIL / 1300 / NIL				
CIRCLING	MDA / (OCH)	NA				
	VIS (m)	NA				

AIRAC AMDT 2203A1 24 MAR 22

USO EXCLUSIVO ACFT MILITARES / MILITARY ACFT ONLY

SBVH_IAC_00G 1/1

IAC PAR RWY 03

CHANGES: FREQ. LAYOUT. MSA.

DEPARTAMENTO DE CONTROLE DO ESPAÇO AÉREO