

INSTRUMENT APPROACH
CHART (IAC)

SÃO PAULO / Congonhas - Deputado Freitas Nobre (SBSP)

AD ELEV: 2634'

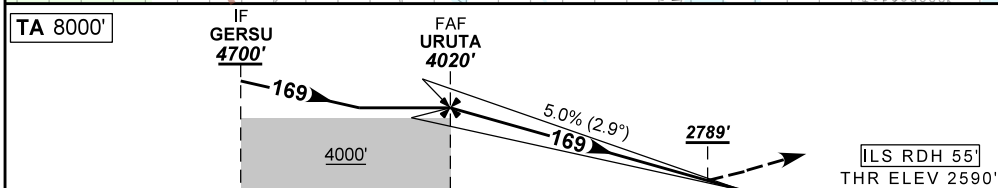
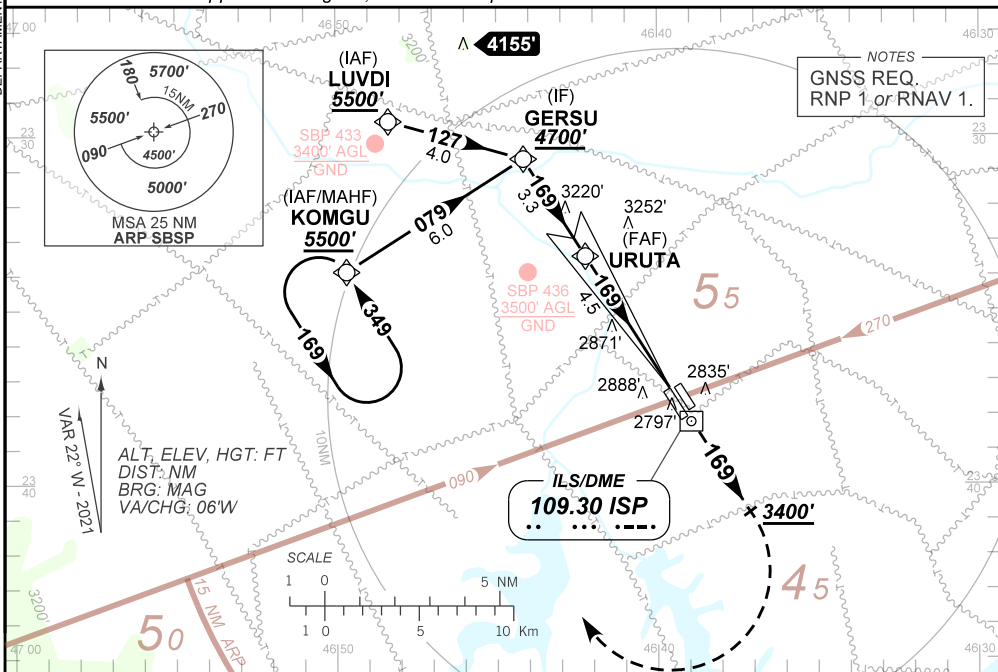
ILS X RWY 17R

D-ATIS 127.65	APP SÃO PAULO 129.75 119.15 120.45 120.85 133.85	TWR SÃO PAULO 118.05 127.15	GNDC SÃO PAULO 121.90
ILS/DME ISP 109.30 MHz	FINAL CRS 169°	FAF: 4020'	CAT I DA / (OCH): 2789' / (200')

APCH Perdida: Subir para **5500'**. Manter proa **169** até cruzar **3400'**. Após, curvar à DIREITA direto KOMGU para espera.

Missed APCH: Climb to **5500'**. Maintain heading **169** until passing **3400'**. Then, turn RIGHT direct KOMGU for holding.

RMK: * RVR ALSF 550m para aproximação utilizando FD, PA ou HUD até a DA.
RVR ALSF 550m for approach using FD, AP or HUD up to DA.



TA 8000'	IF GERSU 4700'	FAF URUTA 4020'	ILS RDH 55'	THR ELEV 2590'
TO THR 17R (NM)	7.8	4.5	0.5	0.0
TO ISP (DME)	9.0	5.7	1.7	1.2

	URUTA	4.0	3.0	2.0	0.5	RWY17R	Ground Speed (KT)	090	110	130	150	170	190
	4020	3877	3569	3260	2789	ALT	FPM	500	600	700	800	900	NA
	1430	1287	979	670	200	(HGT)	FAF-MAPT	NA					

STRAIGHT-IN	CAT	A	B	C	D	E
CAT I	DA / (OCH)	2789' / (200')				NA
	ALSF/NO ALSF/RVR ALSF (m)	800 / 1200 / 700(*)				
CIRCLING	MDA / (OCH)	NA				
	VIS (m)					

DEPARTAMENTO DE CONTROLE DO ESPAÇO AÉREO

CHANGES: MSA