

**INSTRUMENT APPROACH  
CHART (IAC)**

**RIBEIRÃO PRETO / Leite Lopes (SBRP)**

**AD ELEV: 1805'**

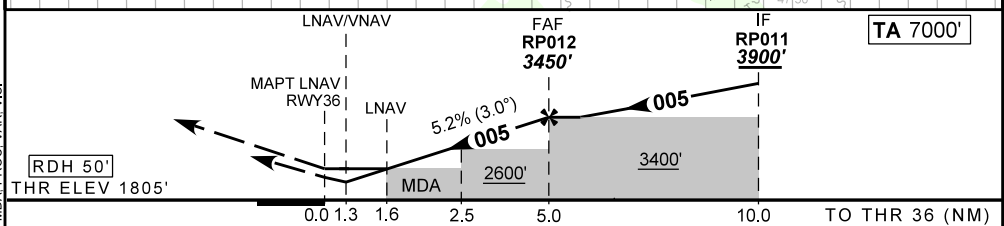
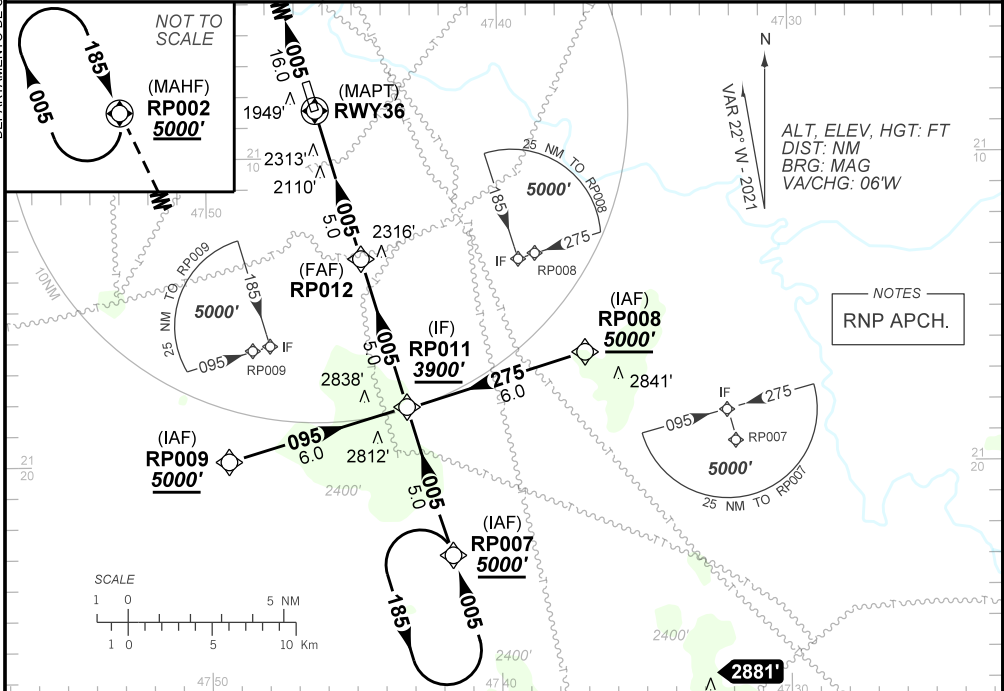
**RNP RWY 36**

ATIS <b>127.425</b>	APP ACADEMIA <b>119.55 119.75 122.40</b>	TWR RIBEIRÃO <b>118.00</b>	GNDC RIBEIRÃO <b>121.60</b>
------------------------	---	-------------------------------	--------------------------------

TEMP LNAV/VNAV <b>MIN -10°C / MAX 50°C</b>	FINAL CRS <b>005°</b>	FAF: <b>3450'</b>	LNAV/VNAV DA / (OCH): <b>2274' / (469')</b>	LNAV MDA / (OCH): <b>2360' / (560')</b>
---	--------------------------	----------------------	--	--

APCH Perdida: Subir para **5000'**. Manter rumo **005** até RP002 para espera.  
Missed APCH: Climb to **5000'**. Maintain course **005** to RP002 for holding.

RMK: NIL.



RWY36	1.3	1.6	2.0	3.0	4.0	RP012	Ground Speed (KT)	090	110	130	150	170	190
ALT	2274	2360	2491	2809	3128	3450	FPM	500	600	700	800	900	NA
(HGT)	469	560	686	1004	1323	1650	FAF-MAPT	NA					

STRAIGHT-IN	CAT	A	B	C	D	E	
	DA / (OCH)	2274' / (469')					NA
LNAV/VNAV	ALS/NO ALS/ RVR ALS (m)	NIL / 2200 / NIL					
	MDA / (OCH)	2360' / (560')					
LNAV	ALS/NO ALS/ RVR ALS (m)	NIL / 2200 / NIL			NIL / 2500 / NIL		
	MDA / (OCH)	NA					
CIRCLING	MDA / (OCH)	NA					
	VIS (m)	NA					

DEPARTAMENTO DE CONTROLE DO ESPAÇO AEREO

CHANGES: APCH, DA, ELEV, FREQ, LAYOUT, MDA, PROC, VAR, VIS.