

**INSTRUMENT APPROACH
CHART (IAC)**

SÃO JOSÉ DOS CAMPOS / Prof. Urbano Ernesto Stumpf (SBSJ)

AD ELEV: 2123'

ILS V or LOC V RWY 16

D-ATIS 127.925	APP SÃO PAULO 124.15 129.00 134.15 134.90	APP RIO 121.35 123.90 125.60 124.70	TWR SÃO JOSÉ 118.50	GNDC SÃO JOSÉ 121.95
--------------------------	---	---	-------------------------------	--------------------------------

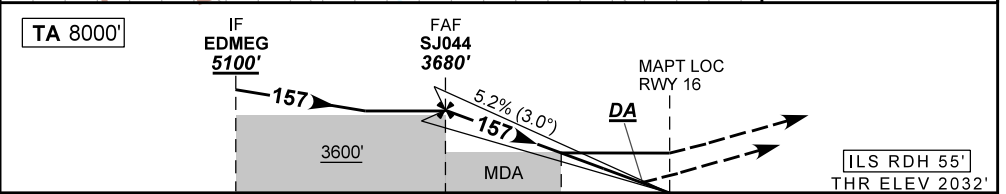
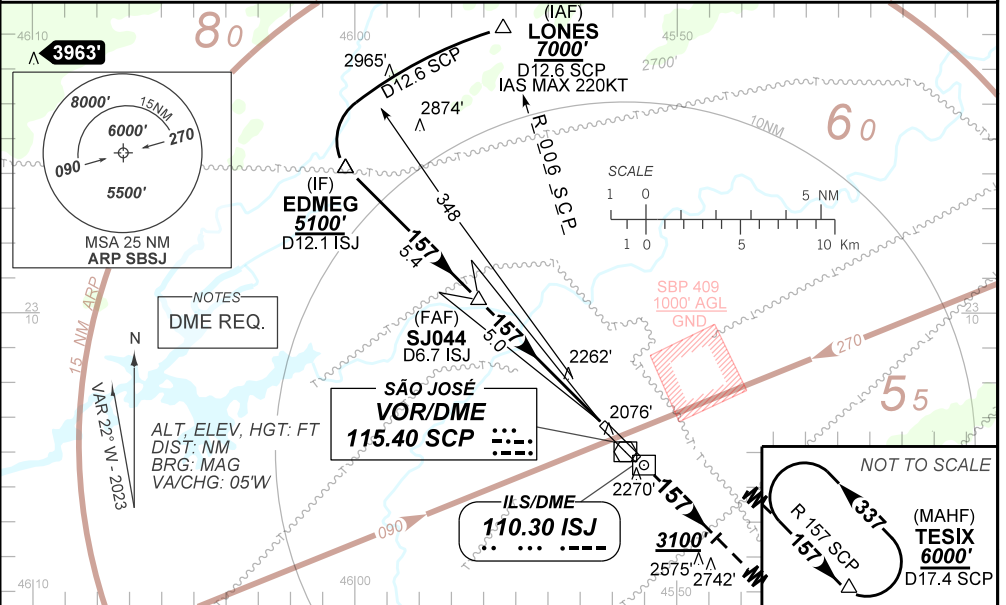
LOC/ISJ 110.30 MHz	FINAL CRS 157°	FAF: 3680'	CAT I DA / (OCH): REFER TO MNM	LOC MDA / (OCH): 2560' / (530')
------------------------------	--------------------------	----------------------	--	---

APCH Perdida: Subir para **6000'** na proa **157'**, com gradiente mínimo de 4%. Após **3100'**, interceptar a RDL **157'** VOR SCP até TESIX para espera.

Missed APCH: Climb to **6000'** on heading **157'**, MNM gradient 4%. After **3100'**, intercept **157'** RDL SCP VOR until TESIX for holding.

RMK: 1) Pouso RWY 34: circular somente pelo setor SW do Aeródromo / Arrival RWY 34: circle SW sector only.
2) (*)VIS RVR ALS 550m para APCH utilizando Diretor de Voo, Piloto Automatico ou Head-Up Display (HUD) / (*)VIS RVR ALS 550m for APCH using a Flight Director, Autopilot or Head-Up Display (HUD).

DEPARTAMENTO DE CONTROLE DO ESPAÇO AÉREO



TO THR 16 (NM)	10.4	5.0	1.5	0.0
TO ISJ (DME)	12.1	6.7	3.2	1.7

SJO44	4.0	3.0	2.0	1.5	0.5	RWY16	Ground Speed (KT)	090	110	130	150	170	190	
	3680	3361	3042	2724	2560	2232		ALT	FPM	500	600	700	800	900
	1694	1329	1010	692	530	200	(HGT)	FAF-MAPT	NA					

CHANGES: PROC. MNM OPR.

STRAIGHT-IN	CAT I	CAT		A	B	C	D	E
		DA / (OCH)	2232' / (200')					2295' / (263')
		ALS/NO ALS/ RVR ALS (m)	800 / 1200 / 700*					800 / 1300 / 700*
LOC	CAT I	MDA / (OCH)		2560' / (530')				
		ALS/NO ALS/ RVR ALS (m)	800 / 1600 / NIL		1700 / 2400 / NIL			
CIRCLING	CAT I	MDA / (OCH)		A	B	C	D	E
		2650' / 530'	3150' / 1030'	3390' / 1270'	3580' / 1460'	4800		
		VIS (m)	1600	4800	4800	4800		