

**INSTRUMENT APPROACH  
CHART (IAC)**

**SANTA MARIA / Santa Maria (SBSM)**

**AD ELEV: 289'**

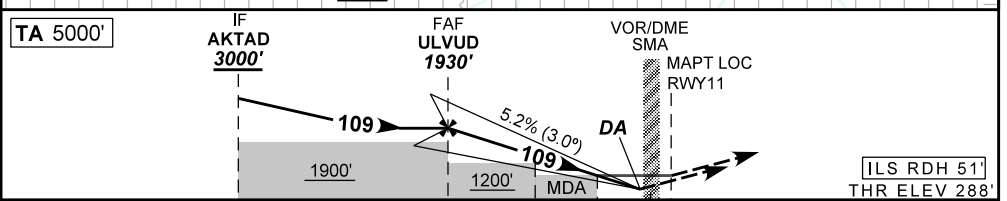
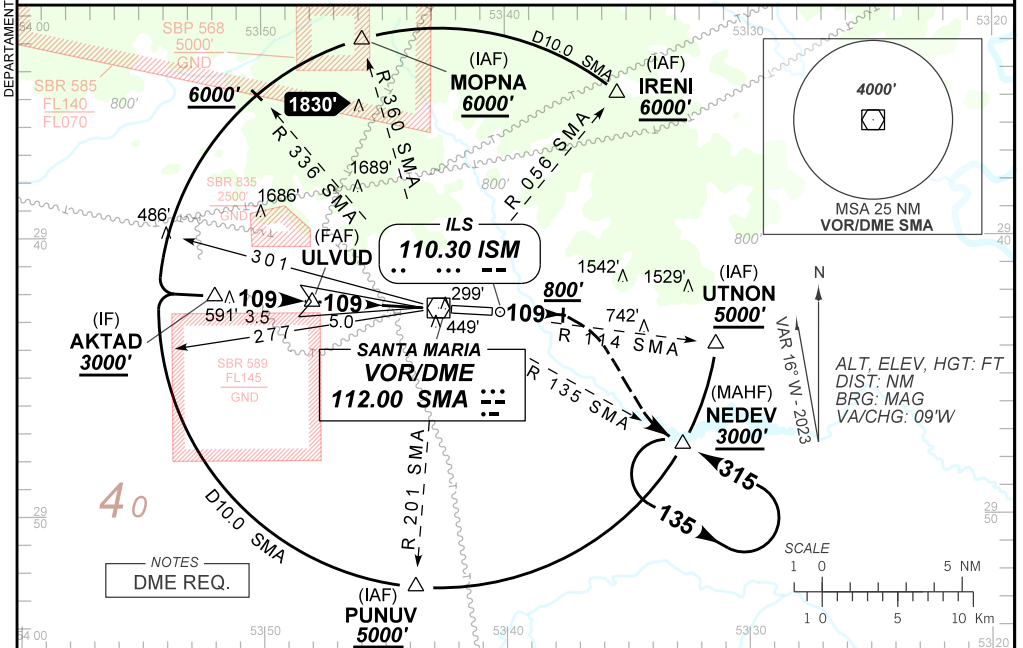
**ILS Z or LOC Z RWY 11**

ATIS <b>127.75</b>	APP SANTA MARIA <b>119.35 121.35</b>	TWR SANTA MARIA <b>118.30 118.85</b>	AFIS SANTA MARIA <b>119.35 121.35 118.30</b>	GNDC <b>NIL</b>
LOC ISM <b>110.30 MHz</b>	FINAL CRS <b>109°</b>	FAF: <b>1930'</b>	CATI <b>DA / (OCH): REFER TO MNM</b>	LOC <b>MDA / (OCH): 730' / (450')</b>

APCH Perdida: Subir para **3000'**. Manter rumo **109°** até **800'**. Após, curvar à DIREITA para interceptar RDL **135°** do VOR SMA até NEDEV para espera. IAS MAX 210 KT até NEDEV.

Missed APCH: Climb to **3000'**. Maintain course **109°** up to **800'**. After, turn RIGHT to intercept **135°** RDL SMA VOR up to NEDEV for holding. IAS MAX 210KT up to NEDEV.

RMK: (\*) VIS RVR ALS 550m para APCH utilizando Diretor de Voo, Piloto automático ou Head-Up Display(HUD).  
(\*) RVR VIS ALS 550m for APCH using a Flight Director, Autopilot or Head-Up Display (HUD).



TO THR 11 (NM)	8.5	5.0	3.0	1.3	0.5	0.0
TO SMA (DME)	8.0	4.5	2.5	0.7	0.0	

	ULVUD	4.0	3.0	2.0	1.3	RWY11	Ground Speed (KT)	090	110	130	150	170	190
		1930	1613	1294	976	730	FPM	500	600	700	800	900	1000
		1642	1325	1006	688	450	FAF-MAPT	NA					

STRAIGHT-IN	CAT	A	B	C	D	E		
		DA / (OCH)	488' / (200')				761' / (473')	
CAT I	ALS/NO ALS/ RVR ALS (m)						800 / 1200 / 700*	1500 / 2200 / 1400
	MDA / (OCH)	730' / (450')						
LOC	ALS/NO ALS/ RVR ALS (m)						800 / 1600 / 700	1400 / 2100 / 700
	MDA / (OCH)						NA	
CIRCLING	VIS (m)						NA	

CHANGES: EAC. IDENT. LAYOUT.