

STANDARD DEPARTURE CHART
INSTRUMENT (SID)

MACAÉ / Plataforma PETROBRÁS 52 P-52 (SBRC)

RNAV PAMAN 1A

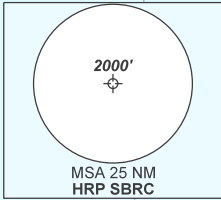
(CAT H)

HELPN ELEV: 105'

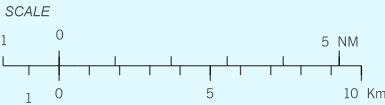
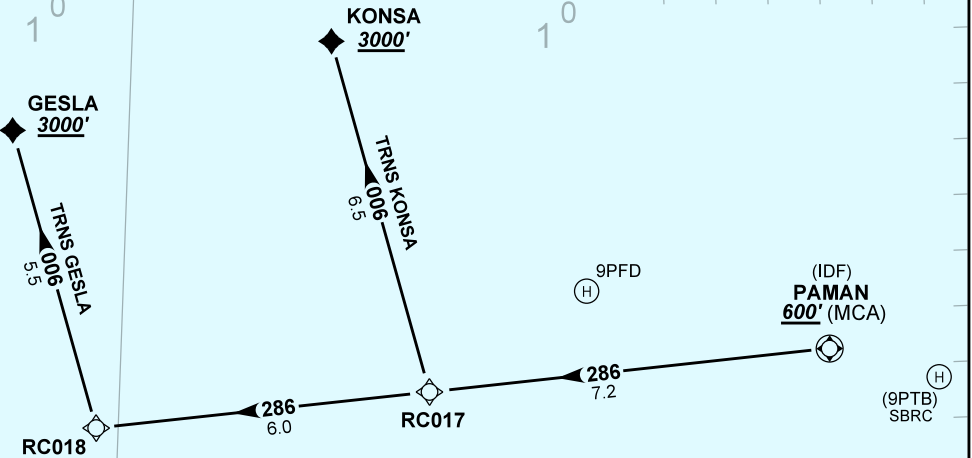
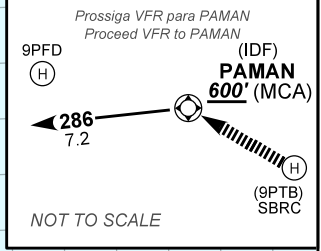
TA 3000'	TWR NIL	APP MACAÉ 131.975 126.90 120.00 129.55 119.20	ACC NIL
-----------------	----------------	--	----------------

DEPARTAMENTO DE CONTROLE DO ESPAÇO AÉREO

CHANGES: DIST. VAR.



NOTES
GNSS REQ.
RNAV 1 or RNP 1.



N

VAR 24° W - 2024

ALT, ELEV, HGT: FT
DIST: NM
BRG: MAG
VA/CHG: 03'W

- R M K
- 1 - Responsabilidade do piloto em comando a separação com obstáculos e terreno até PAMAN.
Responsability of the pilot in command the separation with obstacles and terrain until PAMAN.
 - 2 - Manter regras de voo visual (VFR) até PAMAN.
Maintain visual flight rules (VFR) until PAMAN.
 - 3 - Procedimento poderá ser utilizado de helideques situados dentro de 10NM de PAMAN, desde que em coordenação com o órgão ATS.
Procedure may be used from helidecks located within 10NM of PAMAN, provided that in coordination with the ATS unit.