

STANDARD DEPARTURE CHART
INSTRUMENT (SID)

ARACAJU / Santa Maria, INTL (SBAR)

RWY 30

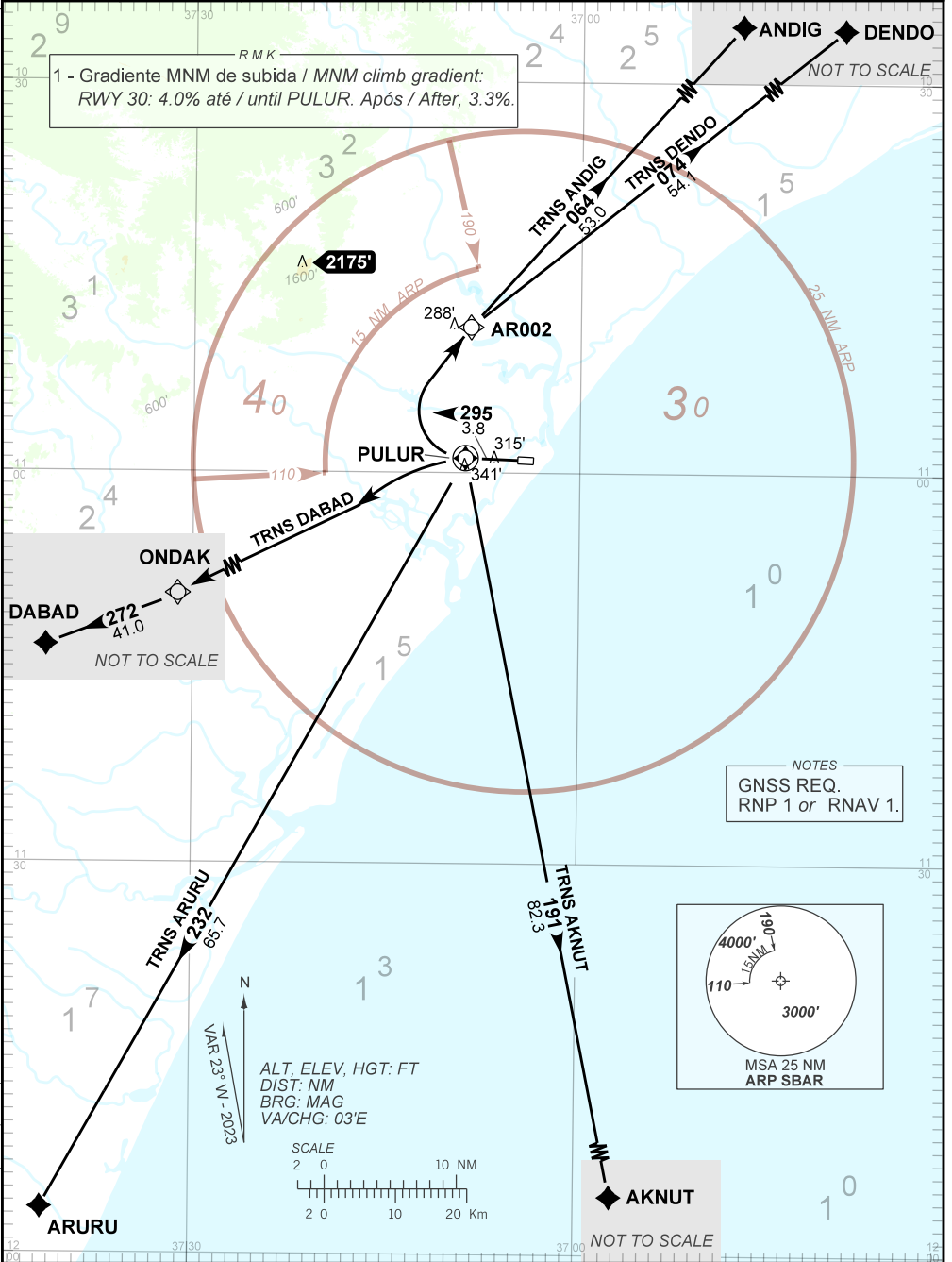
AD ELEV: 23'

RNAV PULUR 2A

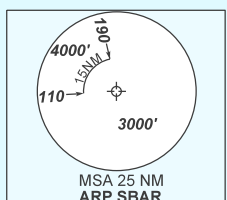
TA 4000'	ATIS NIL	TWR ARACAJU 118.80	APP ARACAJU 129.25 120.30	ACC RECIFE 125.45 126.85 133.65 134.50
----------	----------	--------------------	---------------------------	--

DEPARTAMENTO DE CONTROLE DO ESPAÇO AÉREO

RMK
1 - Gradiente MNM de subida / MNM climb gradient:
RWY 30: 4.0% até / until PULUR. Após / After, 3.3%



NOTES
GNSS REQ.
RNP 1 or RNAV 1.



ALT, ELEV, HGT: FT
DIST: NM
BRG: MAG
VA/CHG: 03'E

SCALE
2 0 10 NM
2 0 10 20 Km

Z
VAR 23° W - 2023

CHANGES: AMA, IDENT, PROC, VAR.