

**INSTRUMENT APPROACH
CHART (IAC)**

ITACOATIARA / Itacoatiara (SBIC)

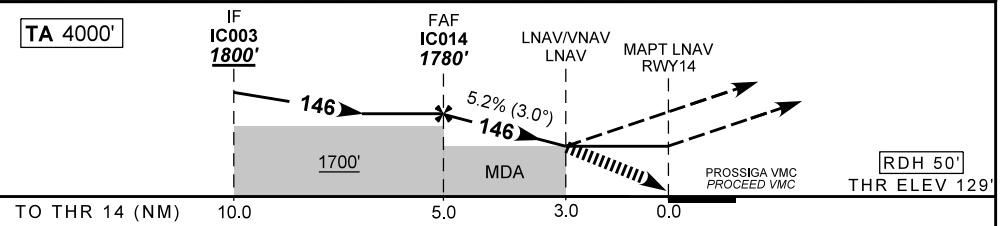
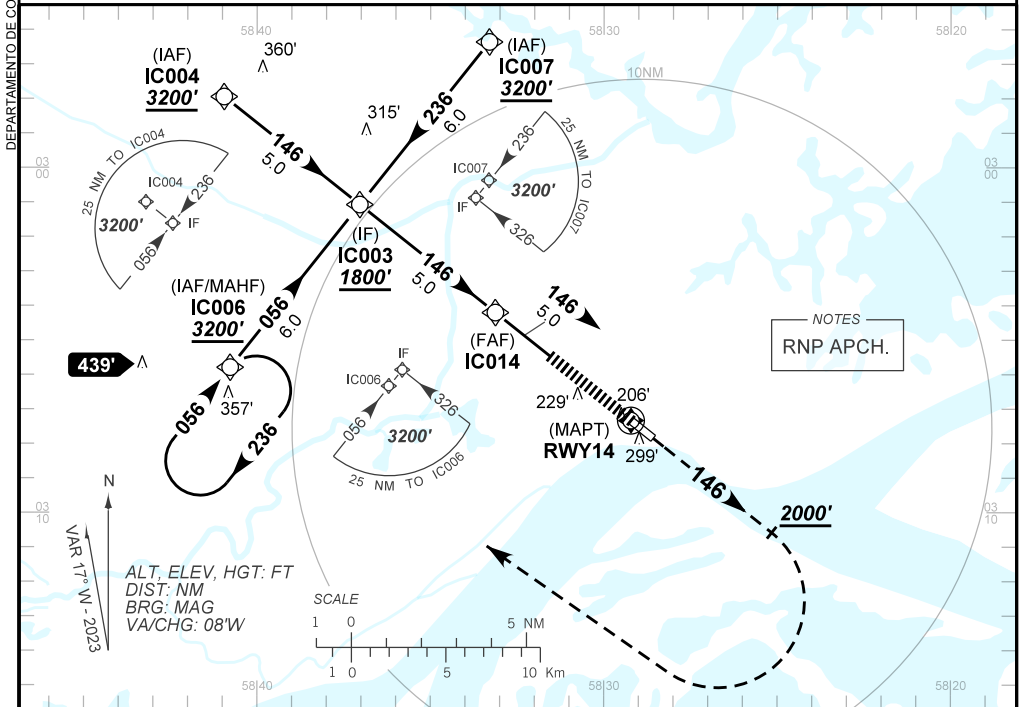
AD ELEV: 141'

RNP RWY 14

ATIS NIL	ERAA 132.35	APP NIL	TWR NIL	GNDC NIL
TEMP LNAV/VNAV MIN -10°C / MAX 50°C	FINAL CRS 146°	FAF: 1780'	LNAV/VNAV DA / (OCH): 1129' / (1000')	LNAV MDA / (OCH): 1130' / (1010')

APCH Perdida: Subir para **3200'**. Manter proa **146°** até **2000'**. Após, curvar à DIREITA direto IC006 para espera.

Missed APCH: Climb to **3200'**. Maintain heading **146°** until **2000'**. After, turn RIGHT direct IC006 for holding.



	IC014	4.0	3.0	RWY 14	Ground Speed (KT)	090	110	130	150	170	190
	1780	1453	1130	ALT	FPM	500	600	700	800	900	NA
	1651	1324	1010	(HGT)	FAF-MAPT	NIL					

STRAIGHT-IN	CAT	A	B	C	D	E
LNAV/VNAV	DA / (OCH)	1129' / (1000')				NA
	ALS/NO ALS/ RVR ALS (m)	NIL / 5000 / NIL				
LNAV	MDA / (OCH)	1130' / (1010')				
	ALS/NO ALS/ RVR ALS (m)	NIL / 5000 / NIL				
CIRCLING	MDA / (OCH)	NA				
	VIS (m)					

CHANGES: NEW CHART.