

**INSTRUMENT APPROACH
CHART (IAC)**

PORTO ALEGRE / Salgado Filho, INTL (SBPA)

ILS Z CAT I or CAT II RWY 11

AD ELEV: 30'

D-ATIS 132.35	APP PALEGRE 119.00 120.10 120.55 128.90		TWR PALEGRE 118.10	GND C PALEGRE 121.90
-------------------------	---	--	------------------------------	--------------------------------

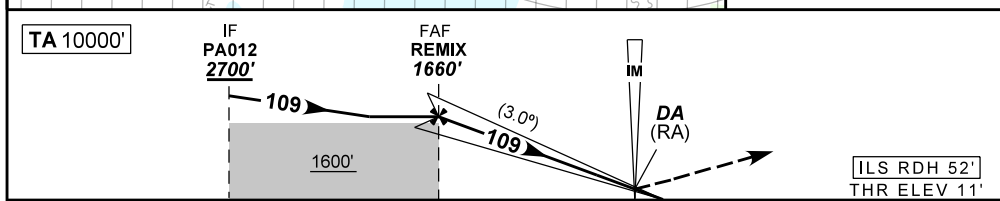
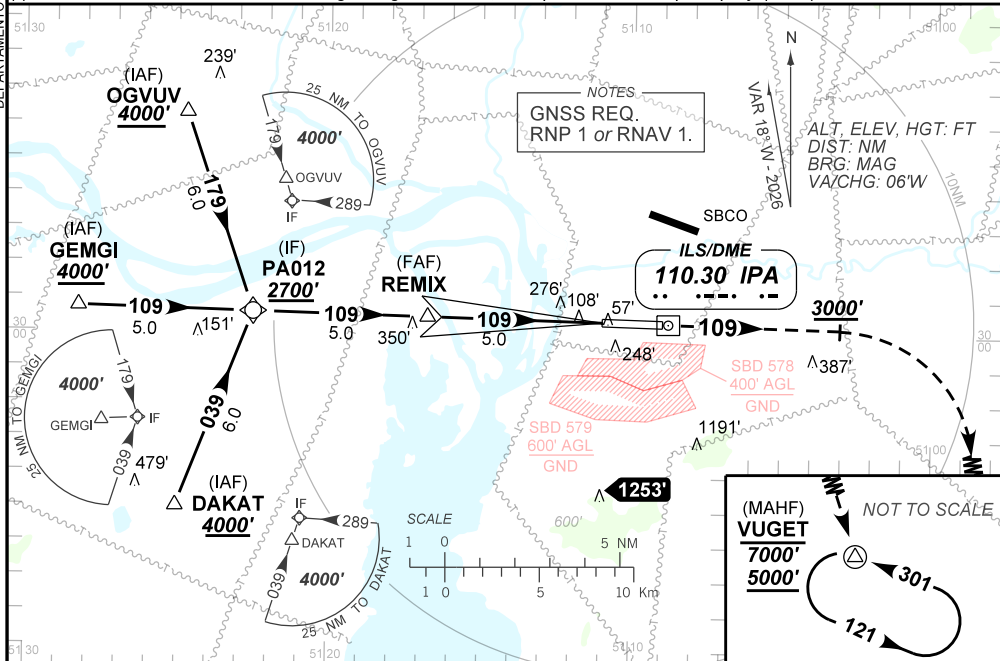
ILS/DME IPA 110.30 MHz	FINAL CRS 109°	FAF: 1660'	CAT I & CAT II DA / (OCH): REFER TO MNM	N/A
----------------------------------	--------------------------	----------------------	---	-----

APCH Perdida: Subir para **5000'**. Manter proa **109** até **3000'**. Após, curvar à DIREITA direto VUGET para espera.

Missed APCH: Climb to **5000'**. Maintain heading **109** until **3000'**. After, turn RIGHT direct VUGET for holding.

RMK: (*)VIS RVR ALS 550m para APCH utilizando Diretor de Voo, Piloto Automático ou Head-Up Display (HUD)
(*)VIS RVR ALS 550m for APCH using a Flight Director, Autopilot or Head-Up Display (HUD).

DEPARTAMENTO DE CONTROLE DO ESPAÇO AÉREO



TO THR 11 (NM)	10.0	5.0	0.1	0.0
TO IPA (DME)	11.9	6.9	2.0	1.9

NIL	RWY 11	Ground Speed (KT)	090	110	130	150	170	190
NIL	ALT	FPM	NIL					
NIL	(HGT)	FAF-MAPT	NA					

STRAIGHT-IN	CAT	A	B	C	D	E
CAT II	DA / (OCH) / RA		111' / (100') / 103'			219' / (208') / 172
	ALS/NO ALS/ RVR ALS (m)		NIL / NIL / 350			NIL / NIL / 700
CAT I	DA / (OCH)		211' / (200')			287' / (276')
	ALS/NO ALS/ RVR ALS (m)		800 / 1200 / 700*			800' / 1300 / 700*
CIRCLING	MDA / (OCH)		NA			
	VIS (m)					