

**INSTRUMENT APPROACH  
CHART (IAC)**

**CURITIBA / Bacacheri (SBBI)  
VOR Y RWY 18  
(CAT A, B)**

**AD ELEV: 3059'**

<b>ATIS</b> 132.325	<b>APP CURITIBA</b> 119.70 119.95 120.65 120.95 129.55 133.15	<b>TWR BACACHERI</b> 118.90	<b>AFIS BACACHERI</b> 118.90 119.95	<b>GNDC BACACHERI</b> 121.80
<b>VOR/DME BCH</b> 112.70 MHz	<b>FINAL CRS</b> 183°	<b>FAF:</b> 5050'	<b>N/A</b>	<b>VOR</b> MDA / (OCH): 3670' / (650')

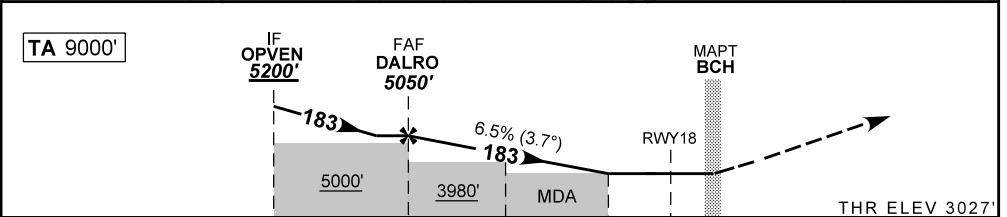
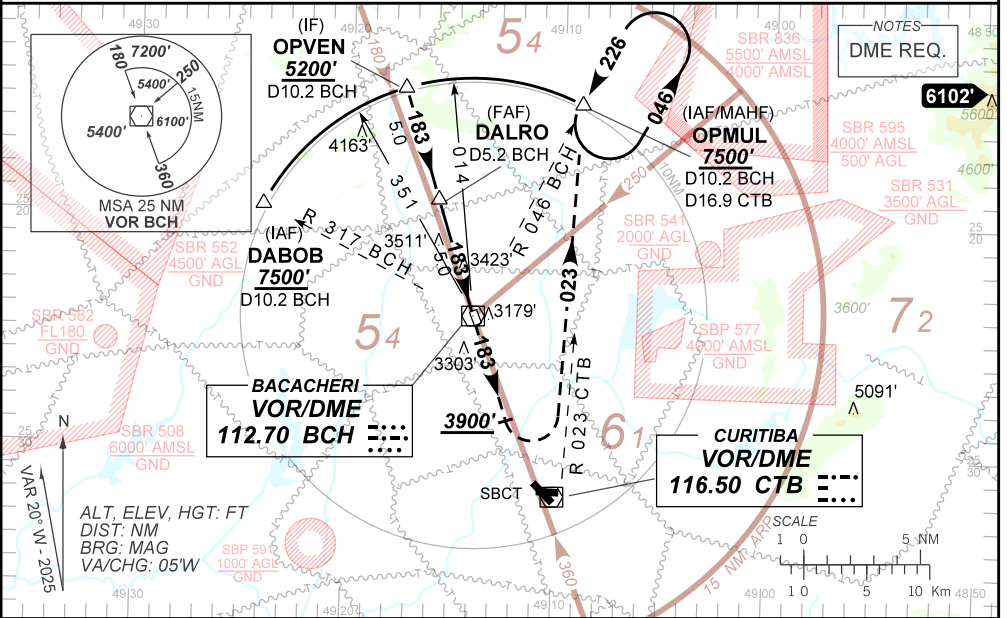
APCH Perdida: Subir para **7500'**. Manter a RDL **183** do VOR BCH até **3900'**. Após curvar à ESQUERDA para interceptar a RDL **023** do VOR CTB até OPMUL para espera.

Missed APCH: Climb to **7500'**. Maintain on RDL **183** BCH VOR until **3900'**. After, turn LEFT to intercept RDL **023** CTB VOR until OPMUL for holding.

RMK: 1) Proibido circular setor W (oeste) do AD. 2) Procedimento para circular RWY 36: após bloqueio do VOR BCH, circular pelo setor E (leste).

1) Prohibited to circle W sector (west) from AD. 2) Procedure to circle RWY 36: after BCH VOR overheading, circling by E sector (east).

DEPARTAMENTO DE CONTROLE DO ESPAÇO AÉREO



TO THR 18 (NM)	10.0	5.0	2.3	1.5	0.0
TO BCH (DME)	10.2	5.2	2.5	1.7	0.2

	DALRO	4.0	3.0	2.3	1.5	RWY18	Ground Speed (KT)	090	110	130	150	170	190
	5050	4649	4256	3983	3670	ALT	FPM	600	700	900		NA	
	2023	1622	1229	956	650	(HGT)	FAF-MAPT				NA		

STRAIGHT-IN	CAT	A	B	C	D	E
	MDA / (OCH)	3670' / (650')				
VOR	ALS/NO ALS/ RVR ALS (m)	NIL / 1600 / NIL				NA
	MDA / (OCH)	3690' / (640')	3820' / (770')			NA
CIRCLING	VIS (m)	NIL / 1600 / NIL				

CHANGES: FPM