

**INSTRUMENT APPROACH
CHART (IAC)**

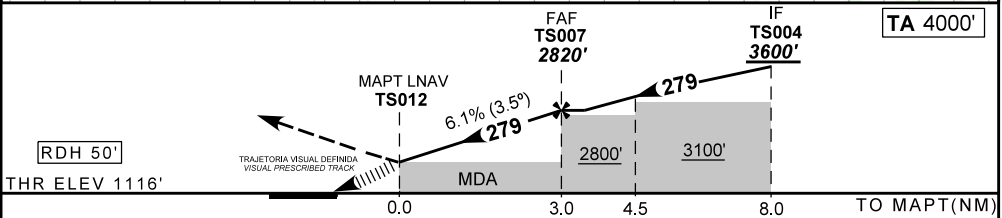
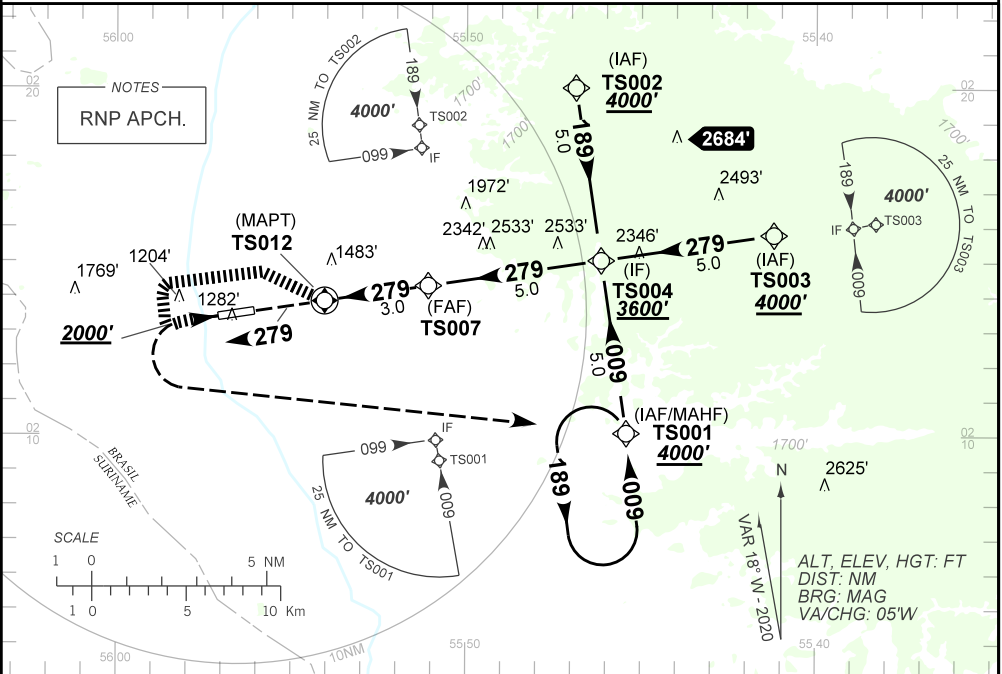
**TIRIÓS / Óbidos, MIL (SBTS)
RNP A RWY 10
(CAT A, B, C)**

AD ELEV: 1129'

ATIS NIL	APP NIL	AFIS TIRIÓS 128.10	GNDC NIL
N/A	FINAL CRS 279°	FAF: 2820'	N/A

APCH Perdida: Subir para **4000'**. Manter rumo **279** até **2000'**. Após, curvar à ESQUERDA direto TS001 para espera. IAS MAX 180KT até TS001.
Missed APCH: Climb to **4000'**. Maintain course **279** until **2000'**. After, turn LEFT direct TS001 for holding.
IAS MAX 180KT until TS001.

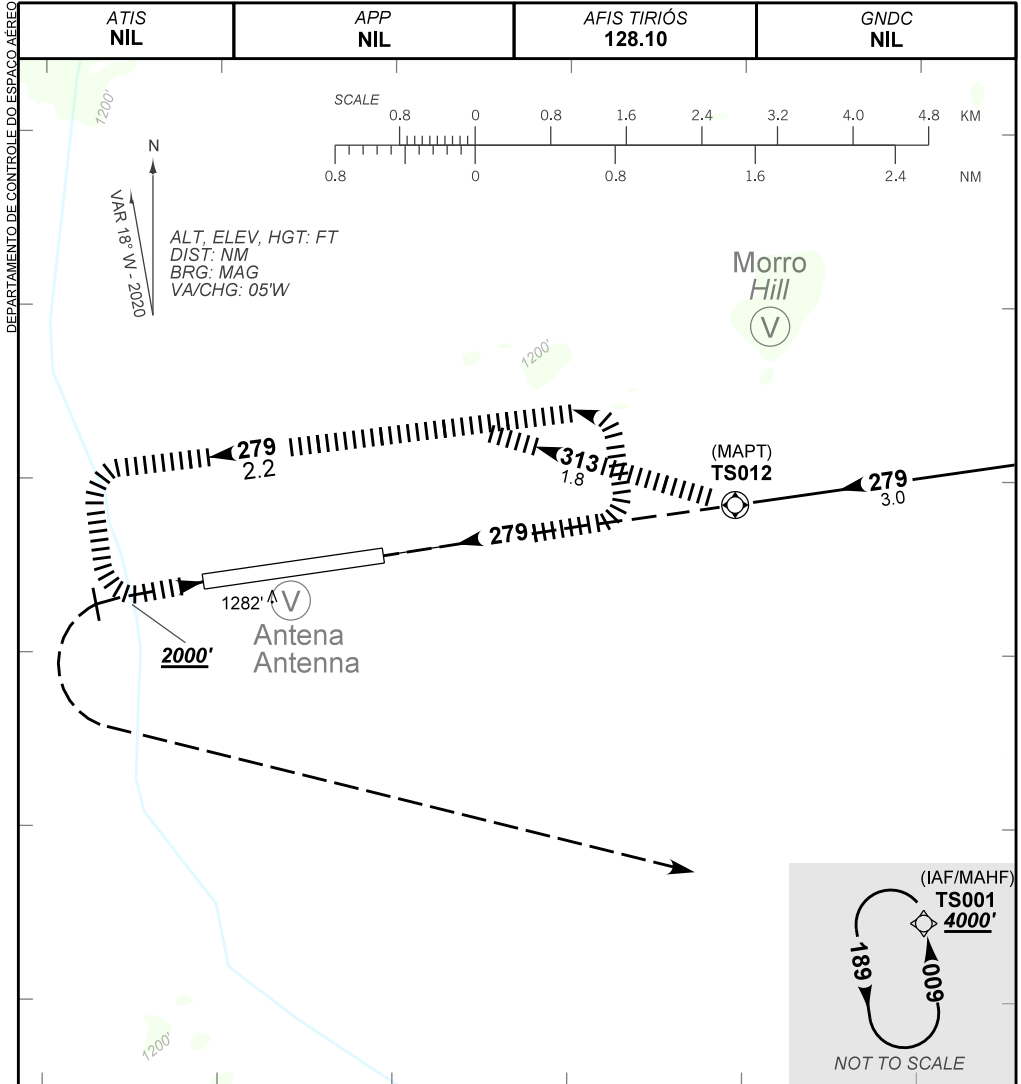
DEPARTAMENTO DE CONTROLE DO ESPAÇO AÉREO



MAPT	TS012	1.0	2.0	TS007	Ground Speed (KT)	090	110	130	150	170	190
ALT	1710	2082	2453	2820	FPM	500	600	700	800	NA	
(HGT)	590	953	1324	1691	FAF-MAPT	NA					

STRAIGHT-IN	CAT	A	B	C	D	E
	MDA / (OCH)	NA				
LNAV	ALS/NO ALS/ RVR ALS (m)	NA				
CIRCLING	MDA / (OCH)	1710' / (590')			NA	
	VIS (m)	1600		2400		

CHANGES: IDENT. LAYOUT.



TRAJETÓRIA VISUAL DEFINIDA RWY 10
VISUAL PRESCRIBED TRACK RWY 10

- 1) O piloto deverá estar em contato visual e prover sua própria separação com as referências visuais:
The pilot should have visual contact and provide his own separation with the visual references:
Morro/Hill (N02 14.89 W055 53.86) e/and Antena/Antenna (N02 13.30 W055 56.59).
- 2) Em caso de aproximação perdida, durante a manobra para circular: Curvar à ESQUERDA para realização de nova passagem e subir para 1800'.
In case of missed approach, during the circling maneuver: turn LEFT to perform a new approach and climb to 1800'.

CHANGES: IDENT. LAYOUT.