

**INSTRUMENT APPROACH
CHART (IAC)**

SÃO PAULO / Congonhas, INTL (SBSP)

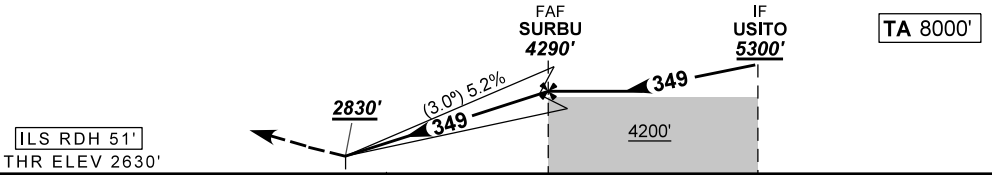
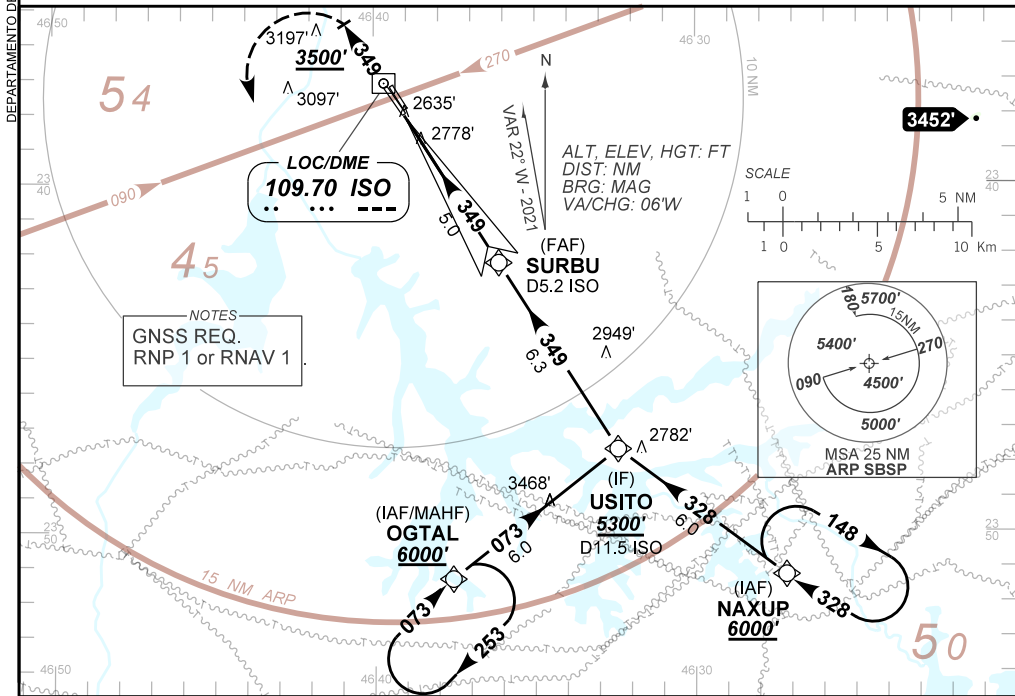
AD ELEV: 2631'

ILS V RWY 35L

D-ATIS 127.65	APP SÃO PAULO 133.85 119.05 134.90 119.80 129.00 119.60 122.75	TWR SÃO PAULO 118.05 127.15	GNDC SÃO PAULO 121.90
LOC ISO 109.70MHz	FINAL CRS 349°	FAF: 4290'	CAT I DA / (OCH): 2830' / (200')
			N/A

APCH Perdida: Subir para **6000'**. Manter rumo **349** com gradiente MNM de 4% até **3500'**. Após, curvar à ESQUERDA direto OGTAL para espera.

Missed APCH: Climb to **6000'**. Maintaing course **349** MNM climb gradient 4% until **3500'**. After, turn LEFT direct to OGTAL for holding.



0.0	0.4	5.0	11.3	TO THR 35L (NM)
0.2	0.6	5.2	11.5	TO ISO DME (NM)

RWY35L	0.4	2.0	3.0	4.0	SURBU	KT	90	110	130	150	170	190
ALT	2830	3317	3636	3954	4290	FPM	500	600	700	800	900	NA
(HGT)	200	687	1006	1324	1660	FAF-MAPT	NA					

STRAIGHT-IN	CAT	A	B	C	D	E
CAT I	DA / (OCH)	2830' / (200')				NA
	ALS/NO ALS/ RVR ALS (m)	NIL / 1200 / NIL				
CIRCLING		NA				

CHANGES: DEC IDENT. PROC.