

**INSTRUMENT APPROACH  
CHART (IAC)**

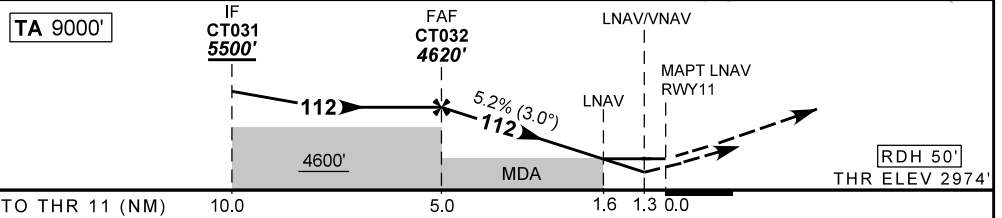
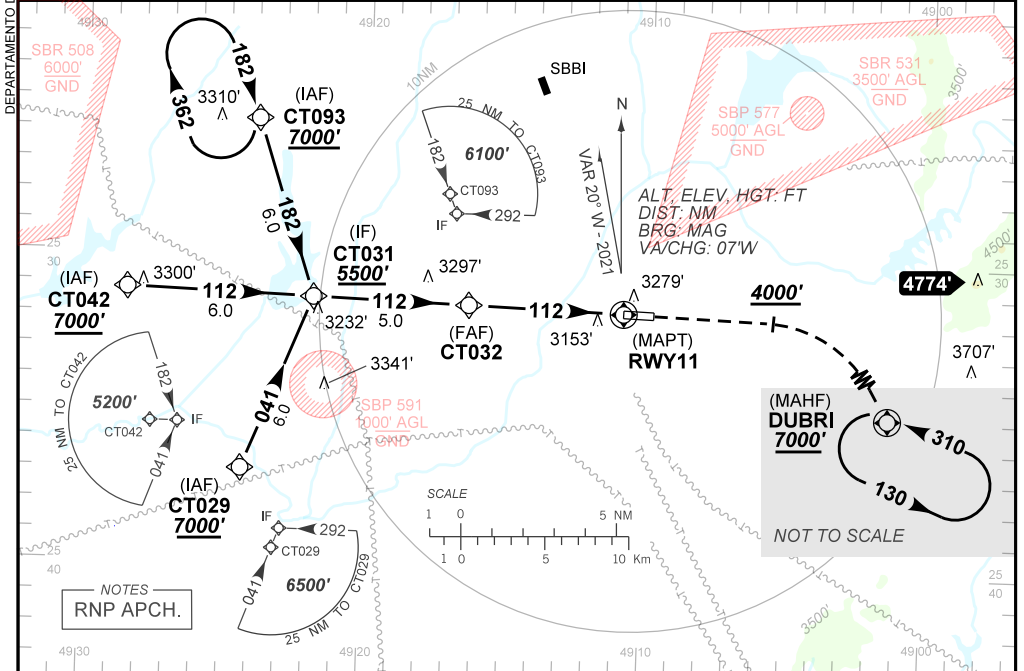
**CURITIBA / Afonso Pena, INTL (SBCT)**

**AD ELEV: 2989'**

**RNP RWY 11**

D-ATIS <b>127.80</b>	APP CURITIBA <b>119.95 119.70 120.65 120.95 133.15</b>	TWR CURITIBA <b>118.15</b>	GNDC CURITIBA <b>121.90</b>
TEMP LNAV/VNAV <b>MIN -10°C / MAX 55°C</b>	FINAL CRS <b>112°</b>	FAF: <b>4620'</b>	LNAV/VNAV DA / (OCH): <b>3444' / (470')</b>
		MDA / (OCH): <b>3530' / (560')</b>	

APCH Perdida: 1) Subir para **7000'**. Manter rumo **112** até cruzar **4000'**. Então, curvar à DIREITA direto DUBRI para espera. 2) IAS MAX 250KT até DUBRI.  
Missed APCH: 1) Climb to **7000'**. Maintain course **112** until passing **4000'**. Then, turn RIGHT direct to DUBRI for holding. 2) IAS MAX 250KT until DUBRI.



	CT032	4.0	3.0	2.0	1.6	RWY11	Ground Speed (KT)	090	110	130	150	170	190
	4620	4298	3979	3661	3530	ALT	FPM	500	600	700	800	900	NA
	1646	1324	1005	687	560	(HGT)	FAF-MAPT	NA					

STRAIGHT-IN	CAT	A	B	C	D	E
	DA / (OCH)	3444' / (470')				NA
LNAV/VNAV	ALS/NO ALS/ RVR ALS (m)	NIL / 2200 / NIL				
LNAV	MDA / (OCH)	3530' / (560')				
	ALS/NO ALS/ RVR ALS (m)	NIL / 2200 / NIL		NIL / 2500 / NIL		
CIRCLING	MDA / (OCH)	NA				
	VIS (m)	NA				

CHANGES: LAYOUT.

DEPARTAMENTO DE CONTROLE DO ESPAÇO AÉREO