

**INSTRUMENT APPROACH
CHART (IAC)**

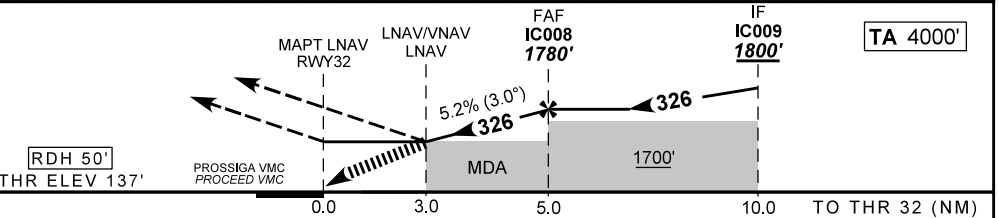
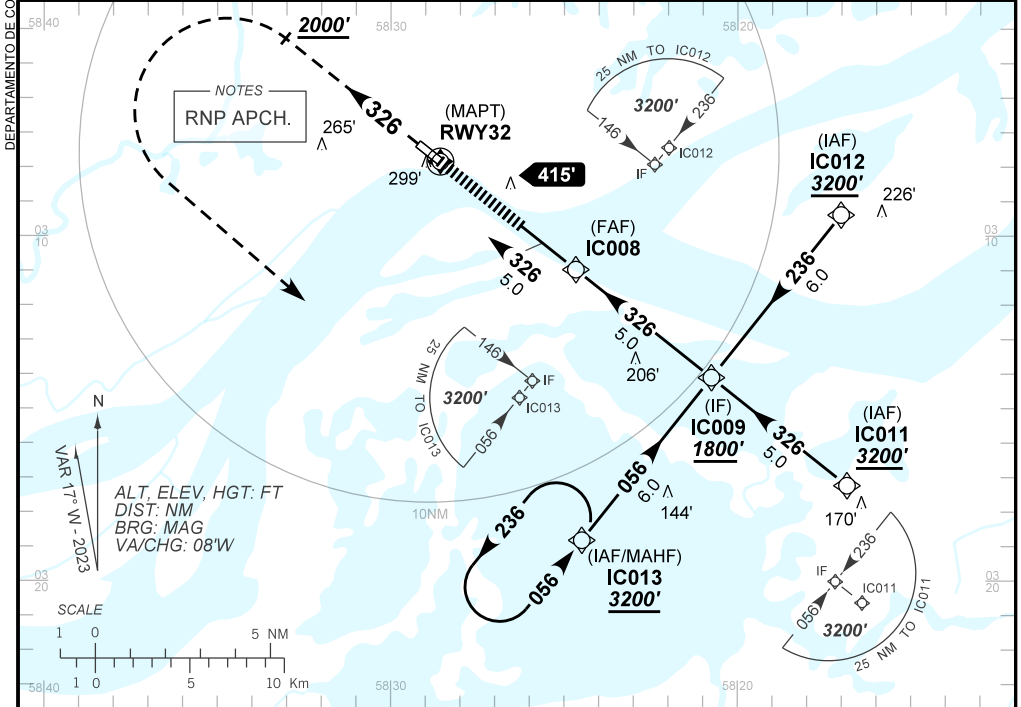
ITACOATIARA / Itacoatiara (SBIC)

AD ELEV: 141'

RNP RWY 32

ATIS NIL	ERAA 132.35	APP NIL	TWR NIL	GNDC NIL
TEMP LNAV/VNAV MIN -10°C / MAX 50°C	FINAL CRS 326°	FAF: 1780'	LNAV/VNAV DA / (OCH): 1137' / (1000')	LNAV MDA / (OCH): 1150' / (1020')

APCH Perdida: Subir para **3200'**. Manter proa **326** até **2000'**. Após, curvar à ESQUERDA direto IC013 para espera.
Missed APCH: Climb to **3200'**. Maintain heading **326** until **2000'**. After, turn LEFT direct IC013 for holding.



RWY32	3.0	4.0	IC008					Ground Speed (KT)	090	110	130	150	170	190
ALT	1150	1461	1780					FPM	500	600	700	800	900	NA
(HGT)	1020	1324	1643					FAF-MAPT	NIL					

STRAIGHT-IN	CAT	A	B	C	D	E
LNAV/VNAV	DA / (OCH)	1137' / (1000')				NA
	ALS/NO ALS/ RVR ALS (m)	NIL / 5000 / NIL				
LNAV	MDA / (OCH)	1150' / (1020')				
	ALS/NO ALS/ RVR ALS (m)	NIL / 5000 / NIL				
CIRCLING	MDA / (OCH)	NA				
	VIS (m)					

CHANGES: NEW CHART.