

INSTRUMENT APPROACH
CHART (IAC)

MANAUS / Ponta Pelada, MIL (SBMN)

AD ELEV: 257'

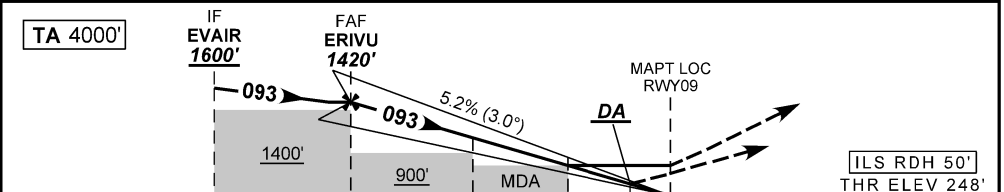
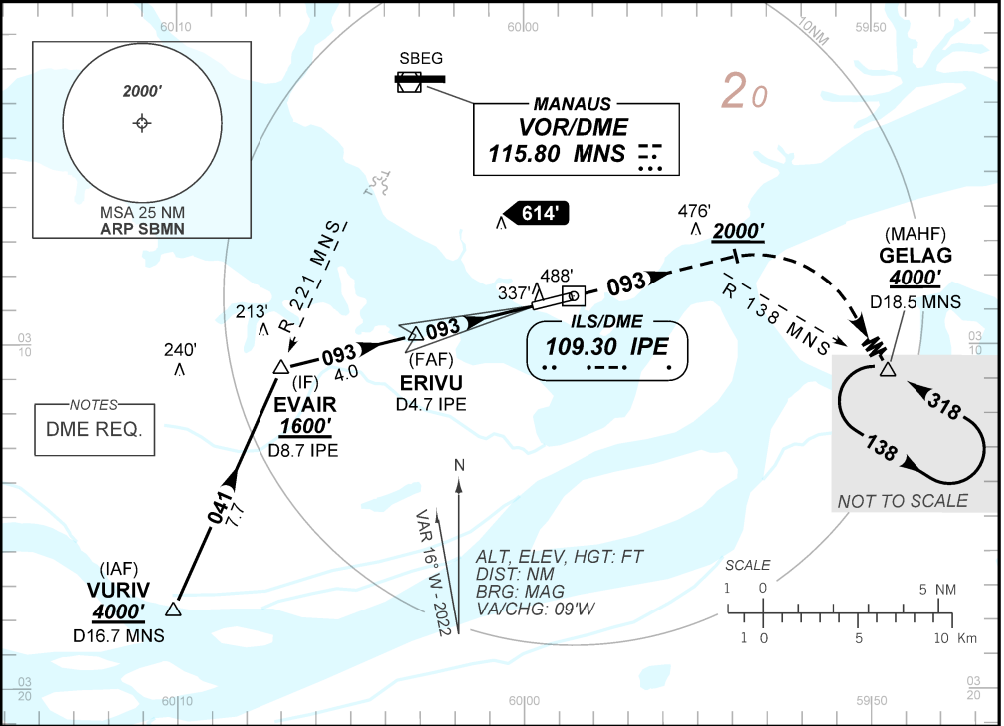
ILS Z or LOC Z RWY 09

ATIS NIL		APP MANAUS 119.25 119.70 120.40		TWR PONTA PELADA 118.60		GNDC NIL	
LOC IPE 109.30 MHz	FINAL CRS 093°	FAF: 1420'	CAT I DA / (OCH): REFER TO MNM		LOC MDA / (OCH): 720' / (480')		

APCH Perdida: 1) Subir para **4000'** com gradiente MNM 4%. Manter rumo **093** até cruzar **2000'**. Então, curvar à DIREITA direto GELAG para espera. 2) IAS MAX 250KT.

Missed APCH: 1) Climb to **4000'** with gradient MNM 4%. Maintain course **093** until passing **2000'**. Then, turn RIGHT direct to GELAG for holding. 2) IAS MAX 250KT.

DEPARTAMENTO DE CONTROLE DO ESPAÇO AÉREO



TO THR 09 (NM)	7.5	3.5	2.2	1.3	0.5	0.0
TO IPE (DME)	8.7	4.7	3.4	2.6	1.7	1.2

	ERIVU	3.0	2.2	1.3	RWY09	Ground Speed (KT)	090	110	130	150	170	190
	1420	1253	900	720	ALT	FPM	500	600	700	800	900	1000
	1172	1005	652	480	(HGT)	FAF-MAPT	NA					

STRAIGHT-IN	CAT	A	B	C	D	E	
	DA / (OCH)	448' / (200')				517' / (269')	
	ALS/NO ALS/ RVR ALS (m)	NIL / 1200 / NIL				NIL / 1300 / NIL	
LOC	MDA / (OCH)	720' / (480')					
	ALS/NO ALS/ RVR ALS (m)	NIL / 1600 / NIL			NIL / 2200 / NIL		

CHANGES: HDG. LAYOUT. VAR.

AIRAC AMDT 2211A1 03 NOV 22

SBMN_IAC_01M 1/1
IAC ILS Z or LOC Z RWY 09