

**INSTRUMENT APPROACH
CHART (IAC)**

NATAL / Campo Augusto Severo, MIL (SBNT)

AD ELEV: 171'

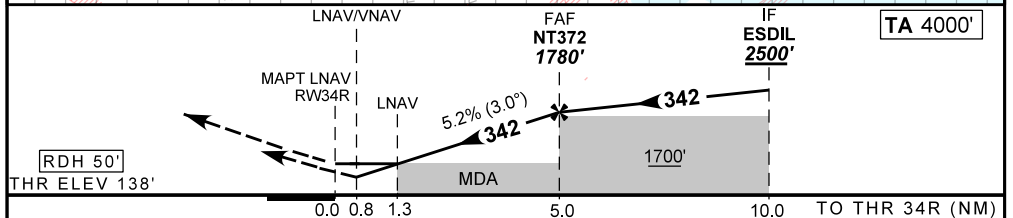
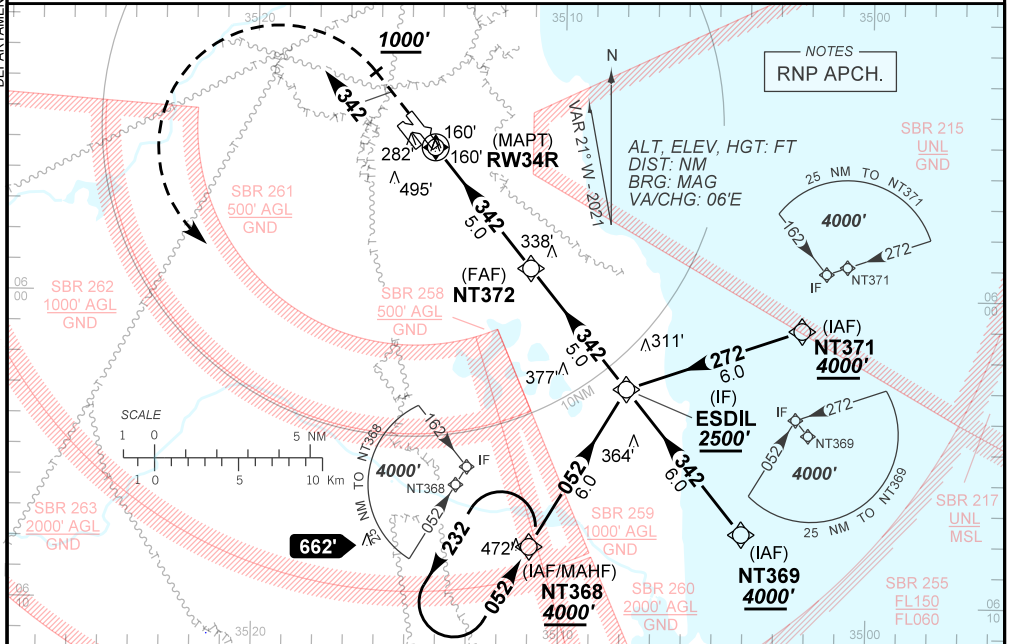
RNP RWY 34R

D-ATIS 132.65	APP NATAL 119.30 119.65 120.65 129.80		TWR NATAL 118.70 122.80	GNDC NATAL 121.90
TEMP LNAV/VNAV MIN 0°C / MAX 50°C	FINAL CRS 342°	FAF: 1780'	LNAV/VNAV DA / (OCH): 450' / (312')	LNAV MDA / (OCH): 590' / (450')

APCH Perdida: Subir para **4000'**, gradiente MNM 4.0% até **1000'**. Manter proa **342** até cruzar **1000'**. Após, curvar à ESQUERDA direto NT368 para espera.

Missed APCH: Climb to **4000'**, MNM gradient 4.0% until **1000'**. Maintain heading **342** until passing **1000'**. After, turn LEFT direct to NT368 for holding.

DEPARTAMENTO DE CONTROLE DO ESPAÇO AÉREO



RW34R	1.3	2.0	3.0	4.0	NT372	Ground Speed (KT)	090	110	130	150	170	190
ALT	590	825	1143	1462	1780	FPM	500	600	700	800	900	NA
(HGT)	450	687	1005	1324	1642	FAF-MAPT	NIL					

STRAIGHT-IN	CAT	A	B	C	D	E		
	DA / (OCH)	450' / (312')				NA		
LNAV/VNAV	ALS/NO ALS/ RVR ALS (m)	NIL / 1600 / NIL				NA		
	MDA / (OCH)	590' / (450')						
LNAV	ALS/NO ALS/ RVR ALS (m)	NIL / 1600 / NIL			NIL / 2100 / NIL			
	MDA / (OCH)	NA						
CIRCLING	MDA / (OCH)							

CHANGES: IDENT LAYOUT.