

INSTRUMENT APPROACH
CHART (IAC)

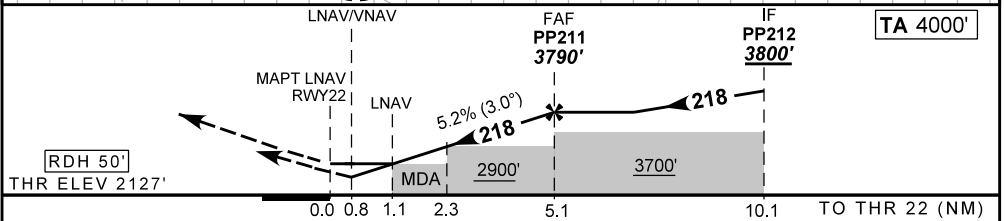
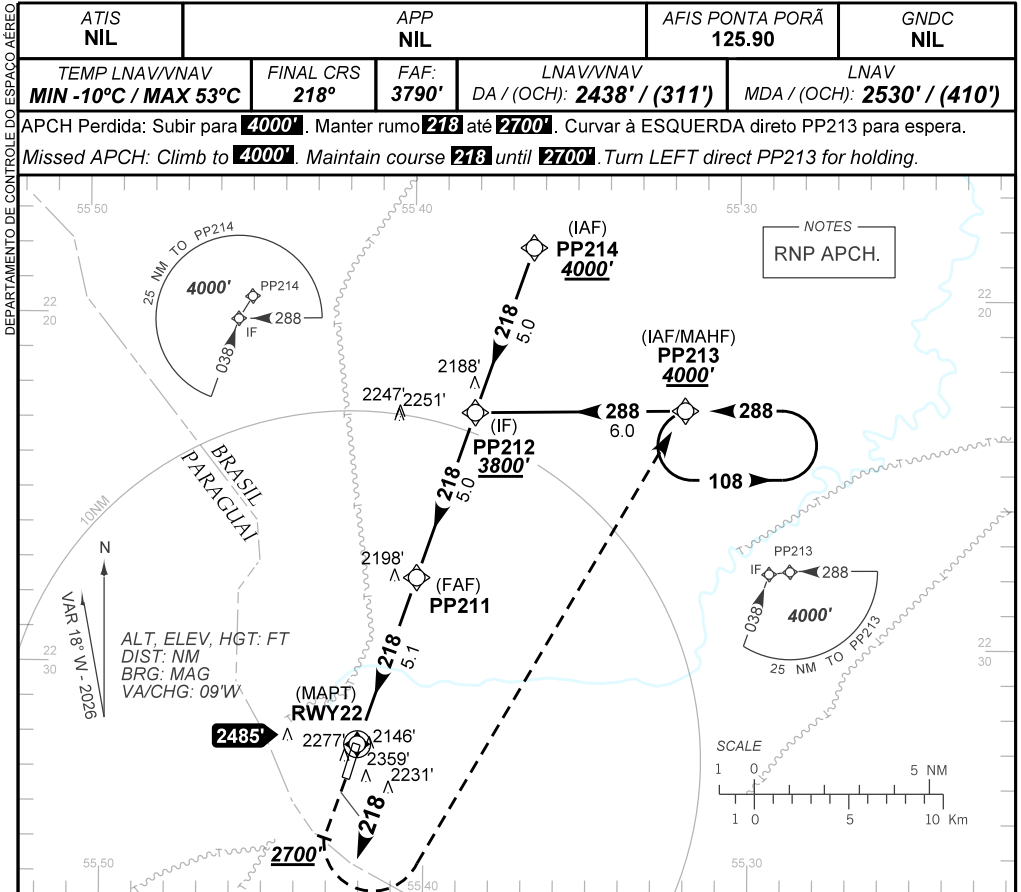
PONTA PORĂ / Ponta Poră, INTL (SBPP)

AD ELEV: 2152'

RNP RWY 22

ATIS NIL	APP NIL	AFIS PONTA PORĂ 125.90	GNDC NIL
TEMP LNAV/VNAV MIN -10°C / MAX 53°C	FINAL CRS 218°	FAF: 3790'	LNAV/VNAV DA / (OCH): 2438' / (311')
		LNAV MDA / (OCH): 2530' / (410')	

APCH Perdida: Subir para **4000'**. Manter rumo **218** até **2700'**. Curvar à ESQUERDA direto PP213 para espera.
Missed APCH: Climb to **4000'**. Maintain course **218** until **2700'**. Turn LEFT direct PP213 for holding.



RWY22	1.1	2.3	3.0	4.0	PP211		Ground Speed (KT)	090	110	130	150	170	190
ALT	2530	2909	3132	3451	3790		FPM	500	600	700	800	900	NA
(HGT)	410	782	1005	1324	1663		FAF-MAPT	NIL					

STRAIGHT-IN	CAT	A	B	C	D	E
	DA / (OCH)	2438' / (311')				
LNAV/VNAV	ALS/NO ALS/ RVR ALS (m)	NIL / 1400 / NIL				
	MDA / (OCH)	2530' / (410')				
LNAV	ALS/NO ALS/ RVR ALS (m)	NIL / 1600 / NIL		NIL / 1900 / NIL		
	MDA / (OCH)	NA				
CIRCLING	VIS (m)	NA				

CHANGES: AD ELEV. AD THR. PROC. VAR.