

**INSTRUMENT APPROACH
CHART (IAC)**

**NAVEGANTES / Ministro Victor Konder, INTL (SBNF)
RNP Y RWY 07 (AR)**

AD ELEV: 18'

(CAT A, B, C)

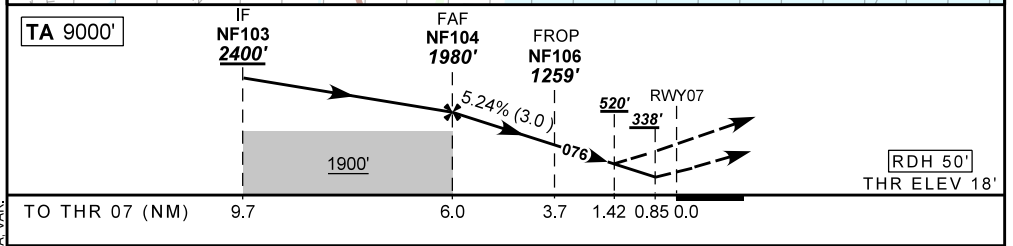
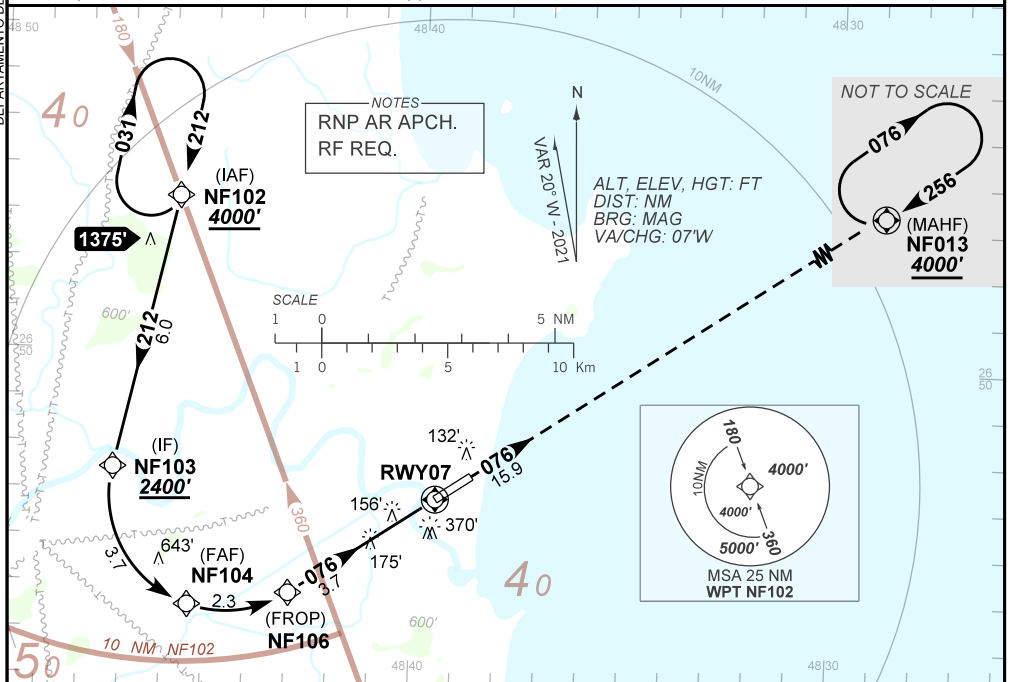
ATIS 127.625	APP FLORIANÓPOLIS 119.50 119.65 128.95 129.45 129.60	TWR NAVEGANTES 118.20	GNDC NIL
------------------------	--	---------------------------------	--------------------

TEMP LNAV/VNAV MIN 0°C / MAX 40°C	FINAL CRS 076°	FAF: 1980'	RNP 0.2 DA / (OCH): 338' / (320')	RNP 0.3 MDA / (OCH): 520' / (502')
---	--------------------------	----------------------	---	--

APCH Perdida: Subir para **4000'**. Manter rumo **076** até NF013 para espera.
Missed APCH: Climb to **4000'**. Maintain course **076** until NF013 for holding.

RMK: Não efetuar transição para o RNP da aproximação perdida antes de 0.85 NM de RWY07.
Do not perform transition to RNP of missed approach before 0.85 NM of RWY07.

DEPARTAMENTO DE CONTROLE DO ESPAÇO AÉREO



NF104	4.0	3.0	2.0	1.4	0.85	RWY07	Ground Speed (KT)	090	110	130	150	NA
1978	1340	1022	704	520	338	ALT	FPM	500	600	700	800	
1960	1322	1004	686	502	320	(HGT)	FAF-MAPT	NIL				

STRAIGHT-IN	CAT	A	B	C	D	E
	DA / (OCH)	338' / (320')				
RNP 0.2	ALS/NO ALS/ RVR ALS (m)	NIL / 1400 / NIL				
	DA / (OCH)	520' / (502')				
RNP 0.3	ALS/NO ALS/ RVR ALS (m)	NIL / 2400 / NIL				

AUTORIZAÇÃO ESPECIAL PARA AERONAVE E TRIPULAÇÃO QUERIDA
SPECIAL AUTHORIZATION FOR AIRCRAFT AND CREW REQUIRED

CHANGES: HDG, IDENT, LAYOUT, RMK, TA, VAR.