

**INSTRUMENT APPROACH
CHART (IAC)**

**SALVADOR / Deputado Luís Eduardo Magalhães, INTL (SBSV)
RNAV(GNSS) RWY 17**

AD ELEV: 66'

CAT (A, B, C)

D-ATIS 127.75	APP SALVADOR 119.35 119.80 120.80 129.45	TWR SALVADOR 118.30 118.60 118.95 121.10	GNDC SALVADOR 121.90
N/A	FINAL CRS 167°	FAF: 1670'	LNNAV MDA / (OCH): 1566' / (1500')

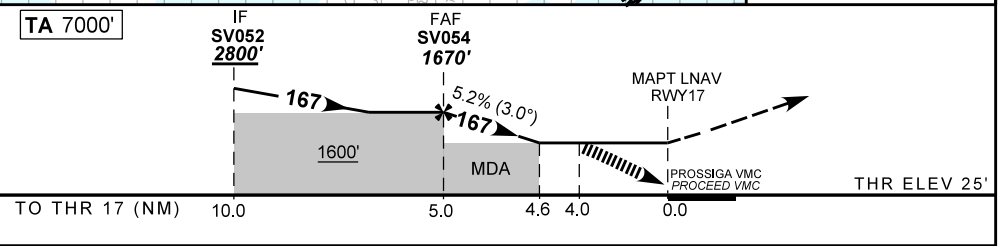
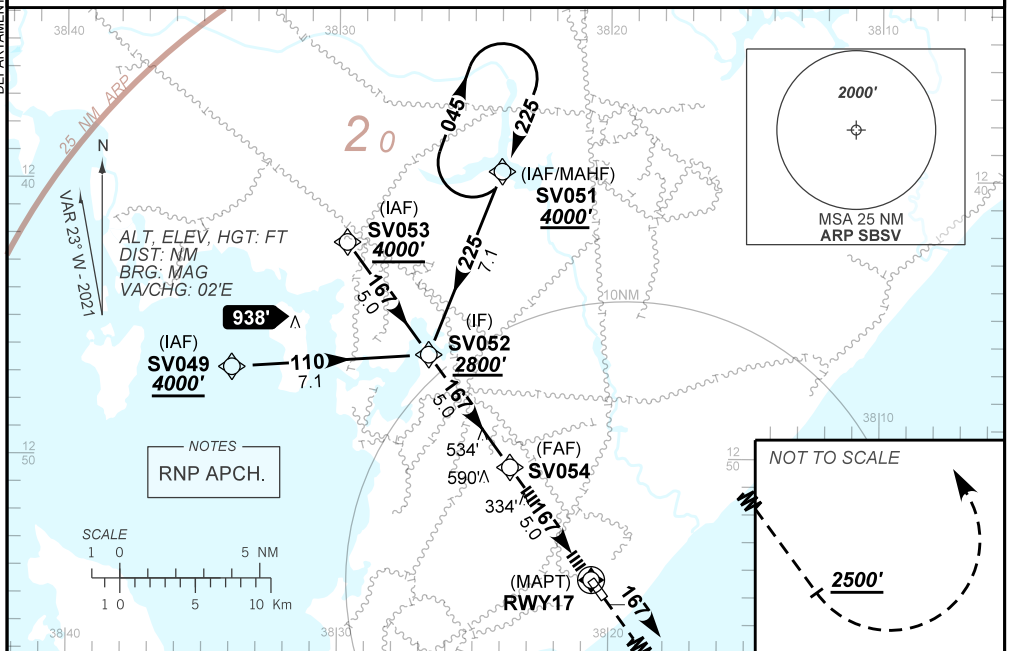
APCH Perdida: Subir para **4000'**. Manter rumo **167** até **2500'**. Após, curvar à ESQUERDA direto SV051 para espera.

Missed APCH: Climb to **4000'**. Maintain course **167** until **2500'**. After, Turn LEFT direct to SV051 for holding.

RMK: Prosseguir VMC a partir de 4NM do MAPT ou efetuar aproximação perdida.

Proceed VMC at 4NM to MAPT or perform the Missed Approach.

DEPARTAMENTO DE CONTROLE DO ESPAÇO AÉREO



	SV054	4.6	RWY17	Ground Speed (KT)	090	110	130	150	170	190
	1670	1566	ALT	FPM	500	600	700	800	NA	
	NIL		(HGT)	FAF-MAPT	NIL					

STRAIGHT-IN	CAT	A	B	C	D	E
	LNNAV	MDA / (OCH)	1566' / (1500')			NA
		NIL / 5000 / NIL				
CIRCLING	MDA / (OCH)	NA				
	VIS (m)					

CHANGES: LAYOUT, PROC. VAR.