

**INSTRUMENT APPROACH
CHART (IAC)**

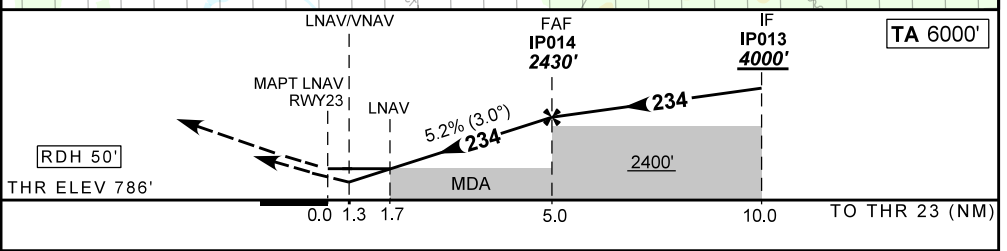
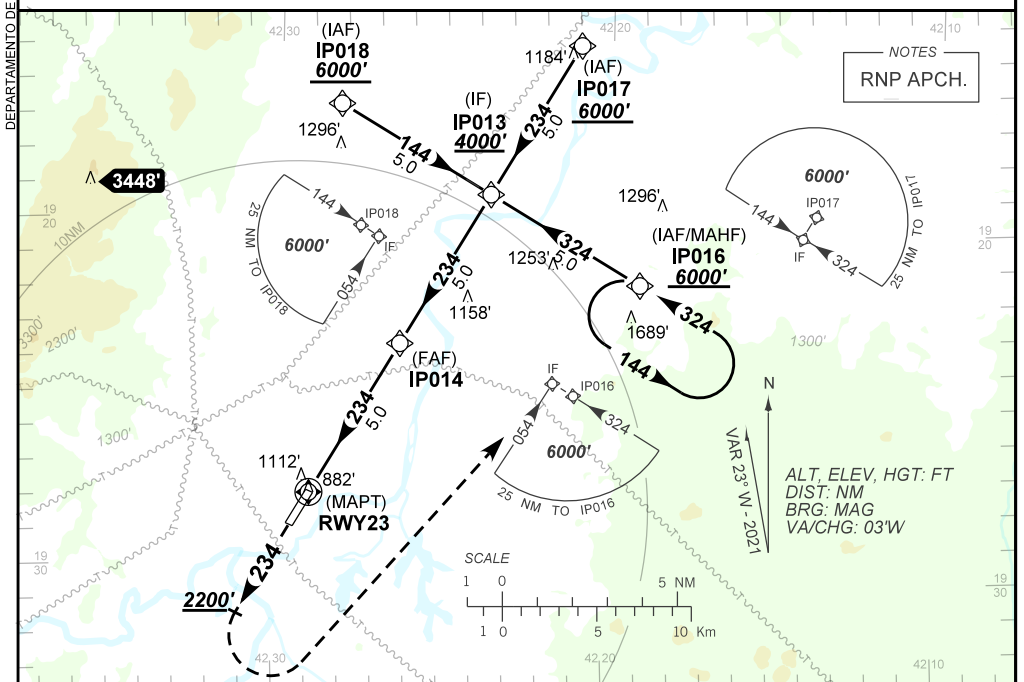
**SANTANA DO PARAÍSO / Usiminas (SBIP)
RNP Y RWY 23**

AD ELEV: 786'

CAT (A,B,C)

ATIS NIL	APP NIL	AFIS USIMINAS 130.00	ERAA 126.30	GNDC NIL
TEMP LNAV/VNAV MIN 0°C / MAX 45°C	FINAL CRS 234°	FAF: 2430'	LNAV/VNAV DA / (OCH): 1263' / (477')	LNAV MDA / (OCH): 1360' / (580')

APCH Perdida: Subir para **6000'**. Manter a proa **234**. Após passar **2200'**, curvar à ESQUERDA direto IP016 para espera.
Missed APCH: Climb to **6000'**. Maintain heading **234**. After passing **2200'**, turn LEFT direct IP016 for holding.



RWY23	1.7	2.0	3.0	4.0	IP014	Ground Speed (KT)	090	110	130	150	170	190
ALT	1360	1473	1791	2110	2430	FPM	500	600	700	800	NA	NA
(HGT)	580	687	1005	1324	1644	FAF-MAPT	NA					

STRAIGHT-IN	CAT	A	B	C	D	E
	DA / (OCH)	1263' / (477')				
LNAV/VNAV	ALS/NO ALS/ RVR ALS (m)	NIL / 2200 / NIL				
	MDA / (OCH)	1360' / (580')				
LNAV	ALS/NO ALS/ RVR ALS (m)	NIL / 2200 / NIL		NIL / 2600 / NIL		
	MDA / (OCH)	NA				
CIRCLING	MDA / (OCH)	NA				
	VIS (m)	NA				

CHANGES: IDENT, LAYOUT, MNM OPR.