

**INSTRUMENT APPROACH
CHART (IAC)
AD ELEV: 295'**

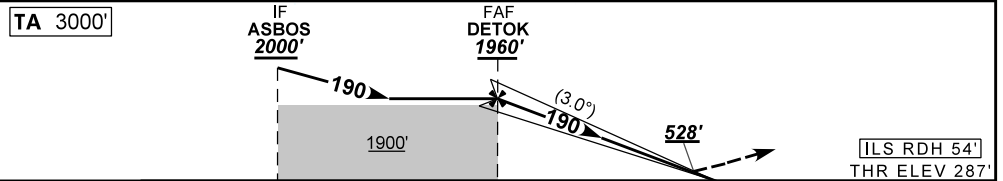
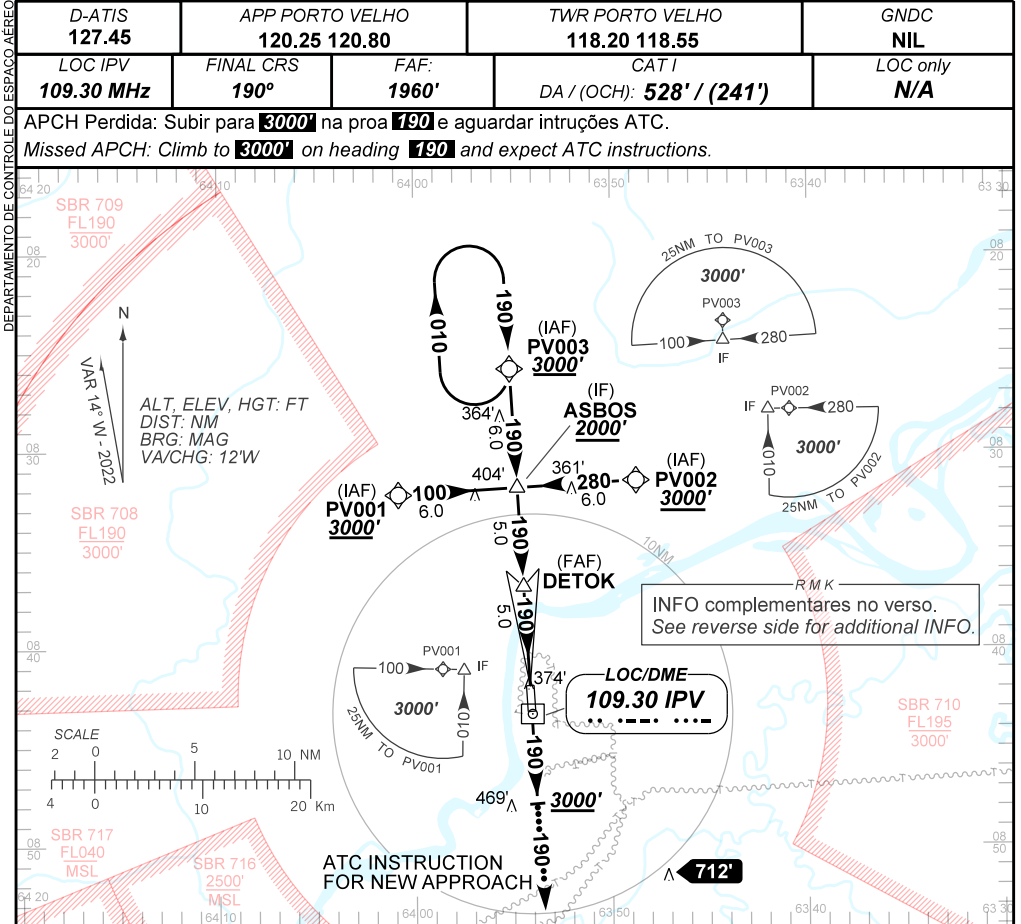
PORTO VELHO / Gov. Jorge Teixeira de Oliveira, INTL (SBPV)

**USO EXCLUSIVO ACFT MILITARES
MILITARY ACFT ONLY**

ILS U RWY 19

D-ATIS 127.45	APP PORTO VELHO 120.25 120.80	TWR PORTO VELHO 118.20 118.55	GNDNC NIL
LOC IPV 109.30 MHz	FINAL CRS 190°	FAF: 1960'	CAT I LOC only N/A
		DA / (OCH): 528' / (241')	

APCH Perdida: Subir para **3000'** na proa **190** e aguardar intruções ATC.
Missed APCH: Climb to **3000'** on heading **190** and expect ATC instructions.



TO THR 19 (NM)	10.0	5.0	0.6	0.0
TO IPV (DME)	11.4	6.4	2.0	1.4

NIL	RWY19	Ground Speed (KT)	090	110	130	150	170	190
NIL	ALT	FPM	NIL					
NIL	(HGT)	FAF-MAPT	NA					

STRAIGHT-IN	CAT	A	B	C	D	E
CAT I	DA / (OCH)	528' / (241')				NA
	ALS/NO ALS/ RVR ALS (m)	NIL / 1300 / NIL				
CIRCLING	MDA / (OCH)	NA				
	VIS (m)					

CHANGES: ATIS, VAR.

AMDT 2203C 24 MAR 22

USO EXCLUSIVO ACFT MILITARES / MILITARY ACFT ONLY

SBPV_IAC_01D 1/2
IAC ILS U RWY 19

DEPARTAMENTO DE CONTROLE DO ESPAÇO AÉREO

RMK

1 - Dados complementares:
Complementary data:

IDENT	LATITUDE / LONGITUDE
PV001	S 08:32.23 / W 64:00.82
PV002	S 08:31.52 / W 63:48.73
PV003	S 08:25.86 / W 63:55.13
ASBOS	S 08:31.88 / W 63:54.77
DETOK	S 08:36.89 / W 63:54.48
RWY19	S 08:41.91 / W 63:54.18

CHANGES: ATIS, VAR.