

**INSTRUMENT APPROACH
CHART (IAC)**

ARACAJU / Santa Maria, INTL (SBAR)

AD ELEV: 23'

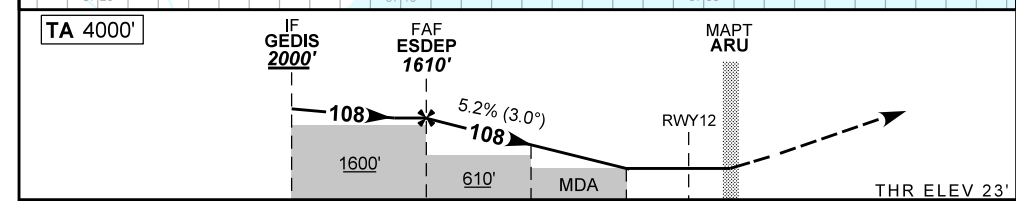
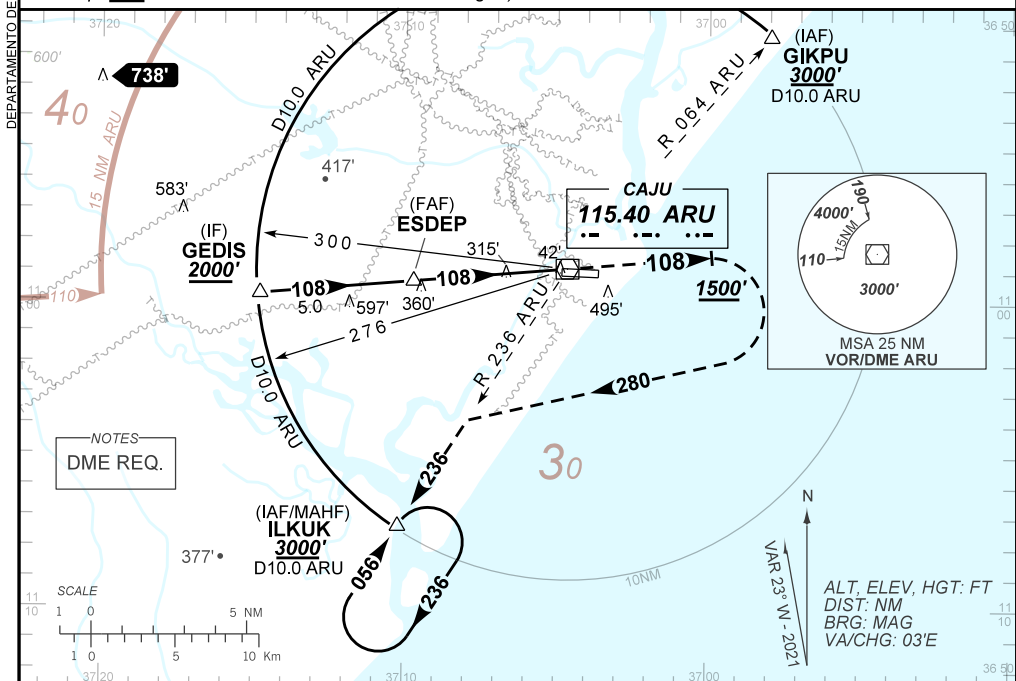
VOR X RWY 12

ATIS NIL	APP ARACAJU 120.30 129.25	TWR ARACAJU 118.80	GNDC NIL
-------------	------------------------------	-----------------------	-------------

VOR ARU 115.40 MHz	FINAL CRS 108°	FAF: 1610'	N/A	VOR MDA / (OCH): 570' / (550')
-----------------------	-------------------	---------------	-----	-----------------------------------

APCH Perdida: 1) Subir para **3000'**. Manter RDL **108** VOR ARU até **1500'**. Após, curvar à DIREITA proa **280** para interceptar RDL **236** VOR ARU até ILKUK para espera. 2) IAS MAX 200KT.

Missed APCH: 1) Climb to **3000'**. Maintain **108** RDL ARU VOR until **1500'**. After, turn RIGHT heading **280** to intercept **236** RDL ARU VOR until ILKUK for holding. 2) IAS MAX 200KT.



TO THR 12 (NM)	9.8	4.8	2.8	1.6	0.0	THR ELEV 23'
TO ARU (DME)	10.0	5.0	3.0	1.8	0.2	

ESDEP	4.0	3.0	2.8	1.6	RWY 12	Ground Speed (KT)	090	110	130	150	170	190
1610	1347	1028	972	570	ALT	FPM	500	600	700	800	900	1000
1587	1324	1005	949	550	(HGT)	FAF-MAPT	NA					

STRAIGHT-IN	CAT	A	B	C	D	E
	MDA / (OCH)	570' / (550')				
VOR	ALS/NO ALS/ RVR ALS (m)	NIL / 1600 / NIL		NIL / 2500 / NIL		
CIRCLING	MDA / (OCH)	NA				
	VIS (m)					

AMDT 2306A0 15 JUN 23

SBAR_IAC_00F/1/1
IAC VOR X RWY 12

CHANGES: PROC. VAR.

DEPARTAMENTO DE CONTROLE DO ESPAÇO AEREO