

**INSTRUMENT APPROACH
CHART (IAC)**

CURITIBA / Afonso Pena, INTL (SBCT)

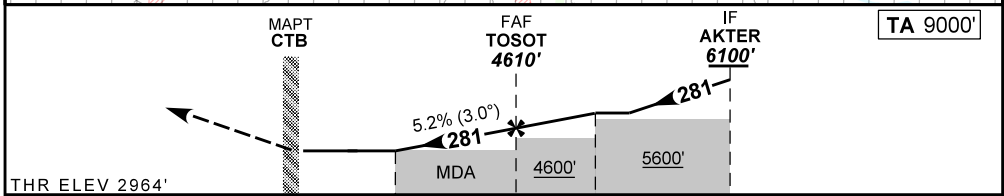
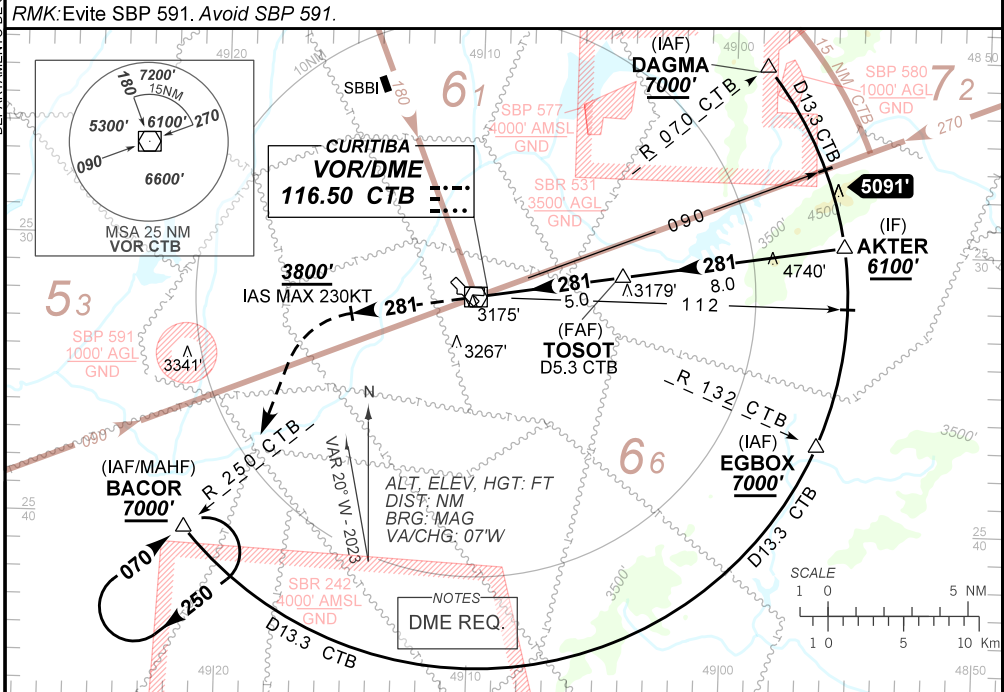
VOR RWY 29

AD ELEV: 2989'

D-ATIS 127.80	APP CURITIBA 119.95 119.70 120.65 120.95 129.55 133.15			TWR CURITIBA 118.15	GNDC CURITIBA 121.90
VOR CTB 116.50 MHz	FINAL CRS 281°	FAF: 4610'	N/A	VOR MDA / (OCH): 3460' / (500')	

APCH Perdida: 1) Subir para **7000'**. Manter a RDL **281'** do VOR CTB até **3800'**. Após, curvar à ESQUERDA para interceptar a RDL **250'** do VOR CTB até BACOR para espera.
Missed APCH: 1) Climb to **7000'**. Maintain RDL **281'** CTB VOR until **3800'**. After, turn LEFT to intercept RDL **250'** CTB VOR until BACOR for holding.

RMK: Evite SBP 591. Avoid SBP 591.



0.0	1.4	5.0	10.0	13.0	TO THR 29 (NM)
0.3	1.7	5.3	10.3	13.3	TO CTB (DME)

RWY29	1.4	2.0	3.0	4.0	TOSOT	Ground Speed (KT)	090	110	130	150	170	190
ALT	3460	3651	3969	4288	4610	FPM	500	600	700	800	900	NA
(HGT)	500	687	1005	1324	1646	FAF-MAPT	NA					

STRAIGHT-IN	CAT	A	B	C	D	E
	MDA / (OCH)	3460' / (500')				
VOR	ALS/SNO ALS/ RVR ALS (m)	NIL / 1600 / NIL		NIL / 2300 / NIL		
		NA				
CIRCLING	MDA / (OCH)	NA				
	VIS (m)	NA				

DEPARTAMENTO DE CONTROLE DO ESPAÇO AÉREO