

**INSTRUMENT APPROACH  
CHART (IAC)**

**PORTO ALEGRE / Salgado Filho, INTL (SBPA)**

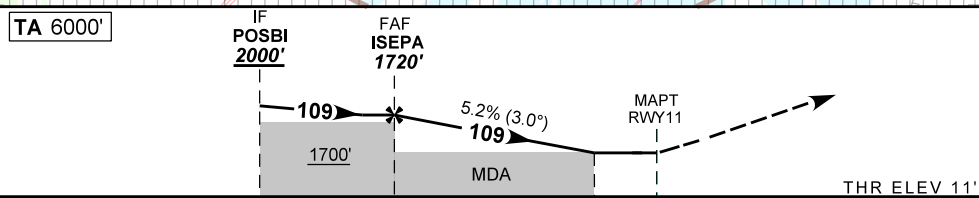
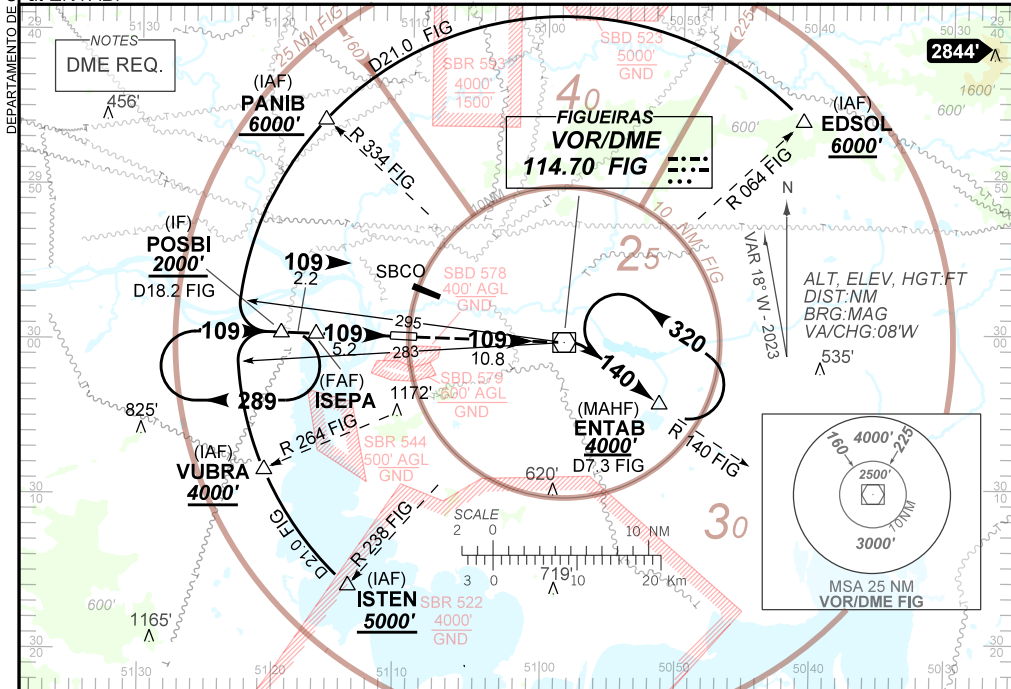
**AD ELEV: 30'**

**VOR Z RWY 11**

D-ATIS <b>132.35</b>	APP PALEGRE <b>119.00 120.10 120.55 128.90</b>	TWR PORTO ALEGRE <b>118.10</b>	GNDQ PORTO ALEGRE <b>121.90</b>
VOR FIG <b>114.70 MHz</b>	FINAL CRS <b>109°</b>	FAF: <b>1720'</b>	VOR MDA / (OCH): <b>620' / (610')</b>

APCH Perdida: Subir para **4000'**. Manter rumo **109°** até VOR FIG. Após curvar à DIREITA, RDL **140°** VOR FIG para espera em ENTAB.

Missed APCH: Climb to **4000'**. Maintain course **109°** until FIG VOR. Turn RIGHT, **140°** FIG RDL for holding at ENTAB.



TO THR 11 (NM)	7.4	5.2	1.8	0.0
TO FIG (DME)	18.2	16.0	12.6	10.8

	ISEPA	4.0	3.0	2.0	1.8	RWY11	Ground Speed (KT)	090	110	130	150	170	190
	1720	1335	1016	698	620	ALT	FPM	500	600	700	800	900	NA
	1709	1324	1005	687	610	(HGT)	FAF-MAPT	NA					

STRAIGHT-IN	CAT	A	B	C	D	E
VOR	MDA / (OCH)	620' / (610')				NA
	ALS/NO ALS/ RVR ALS (m)	NIL / 1600 / NIL		NIL / 2800 / NIL		
CIRCLING	MDA / (OCH)	NA				
	VIS (m)	NA				

CHANGES: EAC, F, FREO, HDG, LAYOUT, VAR.