

INSTRUMENT APPROACH  
CHART (IAC)

JUNDIAÍ / Comandante Rolim Adolfo Amaro (SBJD)

RNP Z RWY 18

(CAT A, B, C)

AD ELEV: 2470'

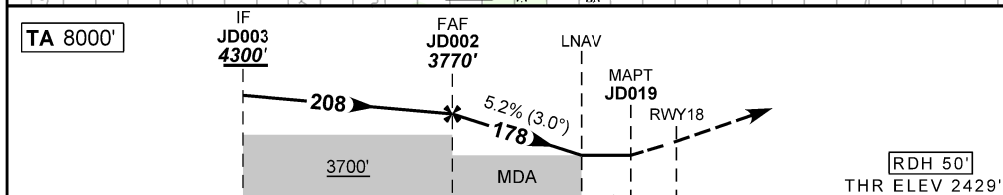
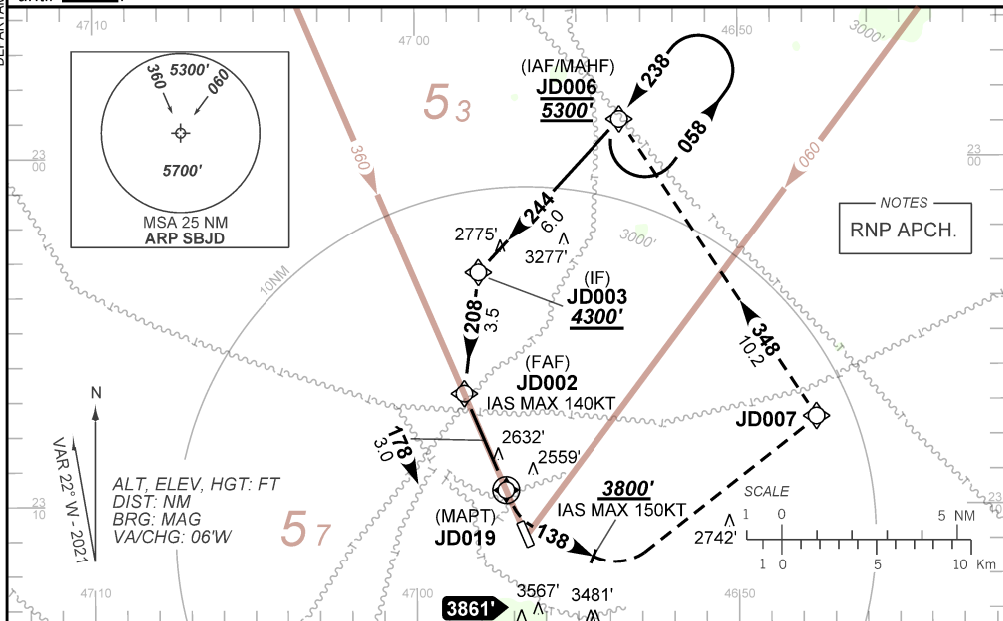
ATIS NIL	APP SÃO PAULO 119.05 119.25 119.80 120.05 120.45 120.85 122.75 123.25 124.15	TWR JUNDIAÍ 118.75	GNDC JUNDIAÍ 121.65
-------------	--	-----------------------	------------------------

N/A	FINAL CRS 178°	FAF: 3770'	N/A	LNNAV MDA / (OCH): REFER TO MNM
-----	-------------------	---------------	-----	------------------------------------

APCH Perdida: 1) Subir para **5300'**, gradiente (\*VER MNM). Manter o rumo **138** até **3800'**. Após, curvar à ESQUERDA direto JD007. Curvar à ESQUERDA, rumo **348** até JD006 para espera. 2) IAS MAX 150KT até **3800'**.

Missed APCH: 1) Climb to **5300'**, MNM gradient (\*REFER TO MNM). Maintain course **138** until passing **3800'**. After, turn LEFT direct to JD007. After, turn LEFT, heading **348** until JD006 for holding. 2) IAS MAX 150KT until **3800'**.

DEPARTAMENTO DE CONTROLE DO ESPAÇO AÉREO



TO THR 18 (NM)	7.5	4.0	1.0	0.0
TO JD019 (NM)	6.5	3.0	0.0	0.0

	JD002	2.5	1.5	RWY18	Ground Speed (KT)	090	110	130	150	170	190
		3770	3290	2960	ALT	500	600	700	800	NA	
		1341	860	530	(HGT)	NIL					

STRAIGHT-IN	CAT	A	B	C	D	E
LNNAV	MDA / (OCH)	2960' / (530')				
Missed APCH Climb gradient	5.0%	NIL / 1600 / NIL		NIL / 2400 / NIL		
LNNAV	MDA / (OCH)	3290' / (860')				
	ALS/NO ALS/ RVR ALS (m)	NIL / 1600 / NIL		NIL / 2000 / NIL / NIL / 2400 / NIL		
CIRCLING	MDA / (OCH)	NA				
	VIS (m)	NA				

CHANGES: LAYOUT