

**INSTRUMENT APPROACH
CHART (IAC)**

IPATINGA / Usiminas (SBIP)

AD ELEV: 786'

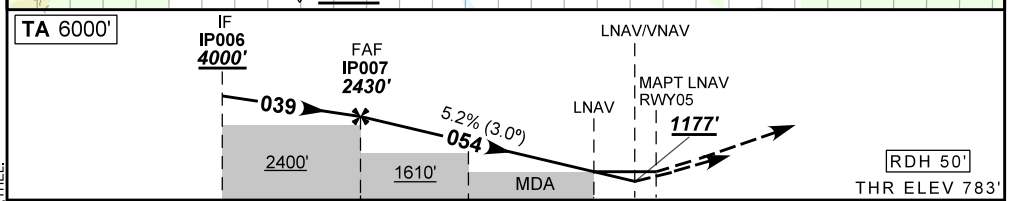
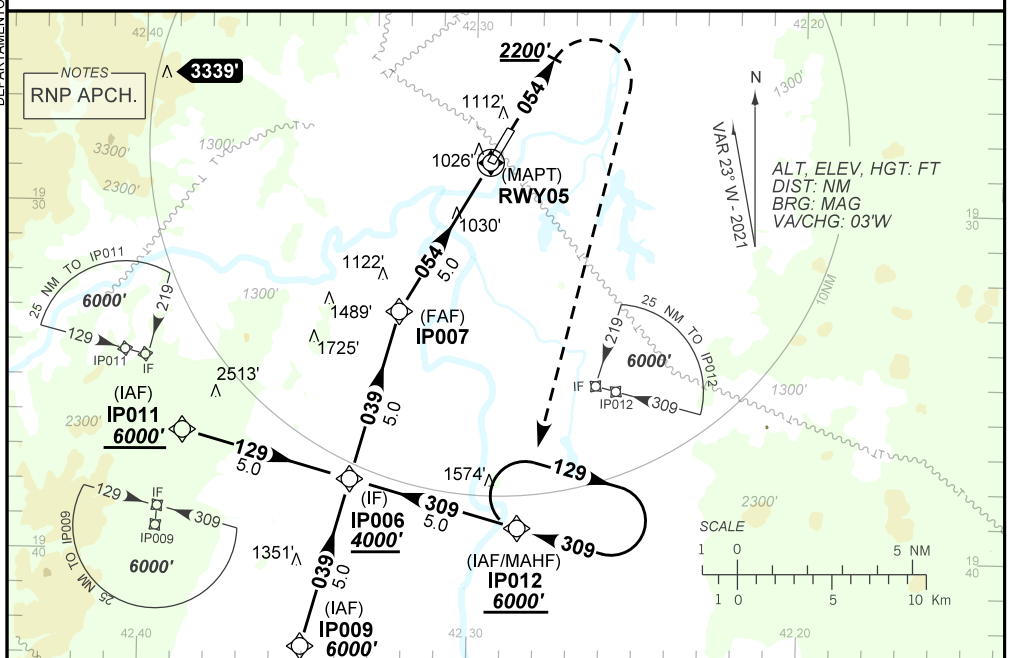
RNP Z RWY 05

ATIS NIL	APP NIL	AFIS USIMINAS 130.00	GNDC NIL
TEMP LNAV/VNAV MIN 0°C / MAX 45°C	FINAL CRS 054°	FAF: 2430'	LNAV/VNAV DA / (OCH): 1177' / (394')
LNAV MDA / (OCH): 1280' / (500')			

APCH Perdida: Subir para **6000'**. Manter a proa **054** até passar **2200'**. Após, curvar à DIREITA direto para IP012 para espera.

Missed APCH: Climb to **6000'**. Maintain heading **054** until passing **2200'**. After, turn RIGHT direct to IP012 for holding.

RMK: NIL.



TA 6000'	IP006 4000'	FAF IP007 2430'	LNAV/VNAV	LNAV	MAPT LNAV RWY05 1177'	RDH 50'	THR ELEV 783'
TO THR 05 (NM)	10.0	5.0	2.5	1.4	1.1	0.0	

IP007	4.0	3.0	2.0	1.4	RWY05	KT	090	110	130	150	170	190
2430	2145	1827	1470	1280	ALT	FPM	500	600	700	800	NA	
1647	1362	1044	687	500	(HGT)	FAF-MAPT	NA					

STRAIGHT-IN	CAT	A	B	C	D	E
	DA / (OCH)	1177' / (394')				
LNAV/VNAV	ALS/NO ALS/ RVR ALS (m)	NIL / 1800 / NIL				
	MDA / (OCH)	1280' / (500')				
LNAV	ALS/NO ALS/ RVR ALS (m)	NIL / 1800 / NIL			NIL / 2300 / NIL	
	MDA / (OCH) / TETO	NA				
CIRCLING	VIS (m)	NA				

DEPARTAMENTO DE CONTROLE DO ESPAÇO AÉREO

CHANGES: ADEL DA DEC. LAYOUT, MDA, PROC. THEL.