

**INSTRUMENT APPROACH  
CHART (IAC)**

**SANTA MARIA / Santa Maria (SBSM)**

**USO EXCLUSIVO ACFT MILITARES  
MILITARY ACFT ONLY**

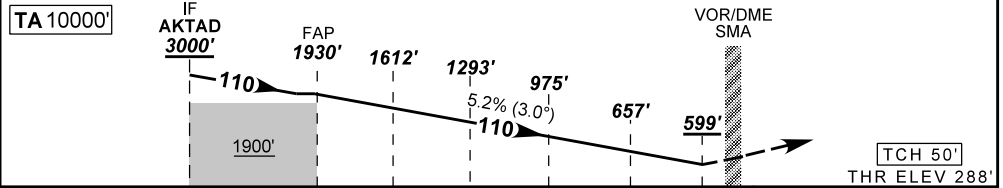
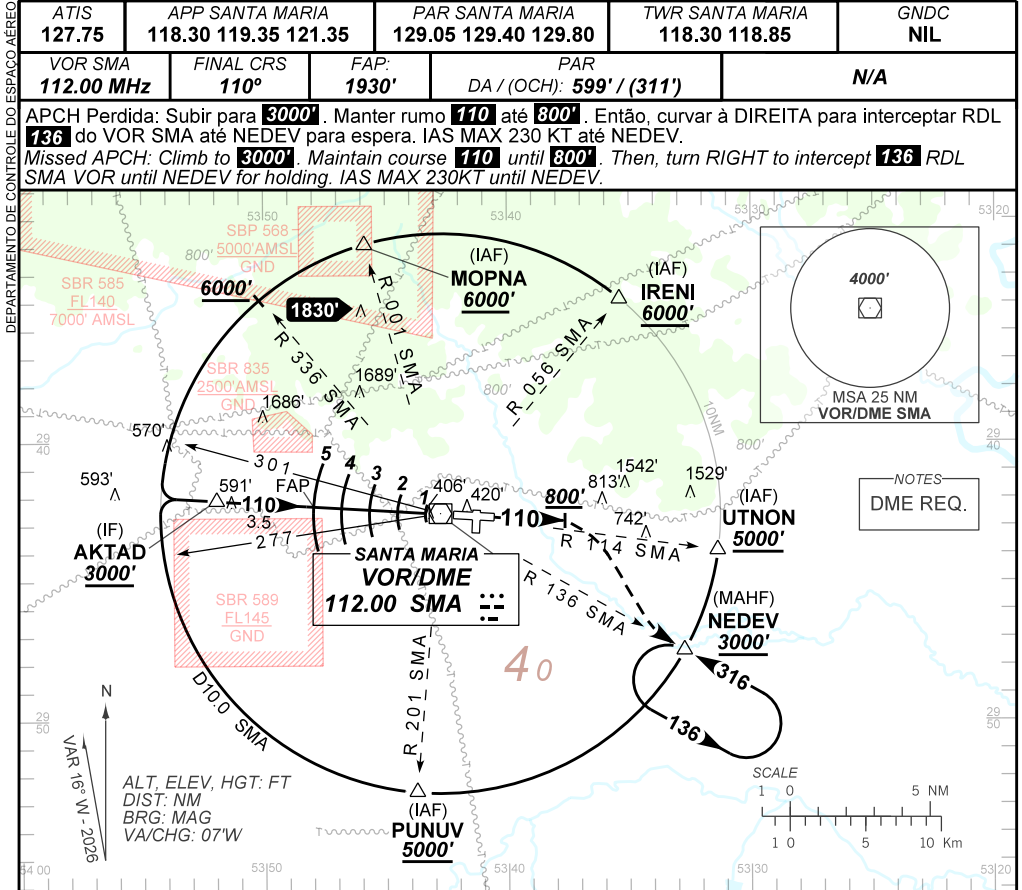
**PAR Z RWY 11**

**AD ELEV: 289'**

|                              |  |  |   |                    |
|------------------------------|--|--|---|--------------------|
| ATIS<br><b>127.75</b>        | APP SANTA MARIA<br><b>118.30 119.35 121.35</b> | PAR SANTA MARIA<br><b>129.05 129.40 129.80</b> | TWR SANTA MARIA<br><b>118.30 118.85</b> | GNDC<br><b>NIL</b> |
| VOR SMA<br><b>112.00 MHz</b> | FINAL CRS<br><b>110°</b>                       | FAP:<br><b>1930'</b>                           | PAR<br>DA / (OCH): <b>599' / (311')</b> | <b>N/A</b>         |

APCH Perdida: Subir para **3000'**. Manter rumo **110°** até **800'**. Então, curvar à DIREITA para interceptar RDL **136** do VOR SMA até NEDEV para espera. IAS MAX 230 KT até NEDEV.

Missed APCH: Climb to **3000'**. Maintain course **110°** until **800'**. Then, turn RIGHT to intercept **136** RDL SMA VOR until NEDEV for holding. IAS MAX 230KT until NEDEV.



|                |     |     |     |     |     |     |     |     |     |
|----------------|-----|-----|-----|-----|-----|-----|-----|-----|-----|
| TO THR 11 (NM) | 8.5 | 5.0 | 4.0 | 3.0 | 2.0 | 1.0 | 0.8 | 0.5 | 0.0 |
| TO SMA (DME)   | 8.0 | 4.5 | 3.5 | 2.5 | 1.5 | 0.5 | 0.3 | 0.0 |     |

|      |      |      |     |     |     |       |                   |     |     |     |     |     |      |
|------|------|------|-----|-----|-----|-------|-------------------|-----|-----|-----|-----|-----|------|
| FAP  | 4.0  | 3.0  | 2.0 | 1.0 | 0.8 | RWY11 | Ground Speed (KT) | 090 | 110 | 130 | 150 | 170 | 190  |
| 1930 | 1612 | 1293 | 975 | 657 | 599 | ALT   | FPM               | 500 | 600 | 700 | 800 | 900 | 1000 |
| 1642 | 1324 | 1005 | 687 | 369 | 311 | (HGT) | FAF-MAPT          | NA  |     |     |     |     |      |

|             |                         |                  |   |   |   |   |
|-------------|-------------------------|------------------|---|---|---|---|
| STRAIGHT-IN | CAT                     | A                | B | C | D | E |
|             | DA / (OCH)              | 599 / (311')     |   |   |   |   |
| PAR         | ALS/NO ALS/ RVR ALS (m) | 800 / 1400 / NIL |   |   |   |   |
|             | MDA / (OCH)             | NA               |   |   |   |   |
| CIRCLING    | MDA / (OCH)             | NA               |   |   |   |   |
|             | VIS (m)                 | NA               |   |   |   |   |

CHANGES: FREQ, MINM, PROC, OBST, TA, VAR.

AIRAC AMDT 2603A1 19 MAR 26

**USO EXCLUSIVO ACFT MILITARES / MILITARY ACFT ONLY**

**SBSM\_IAC\_01E 1/1  
IAC PAR Z RWY 11**