

**INSTRUMENT APPROACH  
CHART (IAC)**

**BAURU / Bauru (SBBU)**

**AD ELEV: 2025'**

**RNAV(GNSS) Z RWY 32**

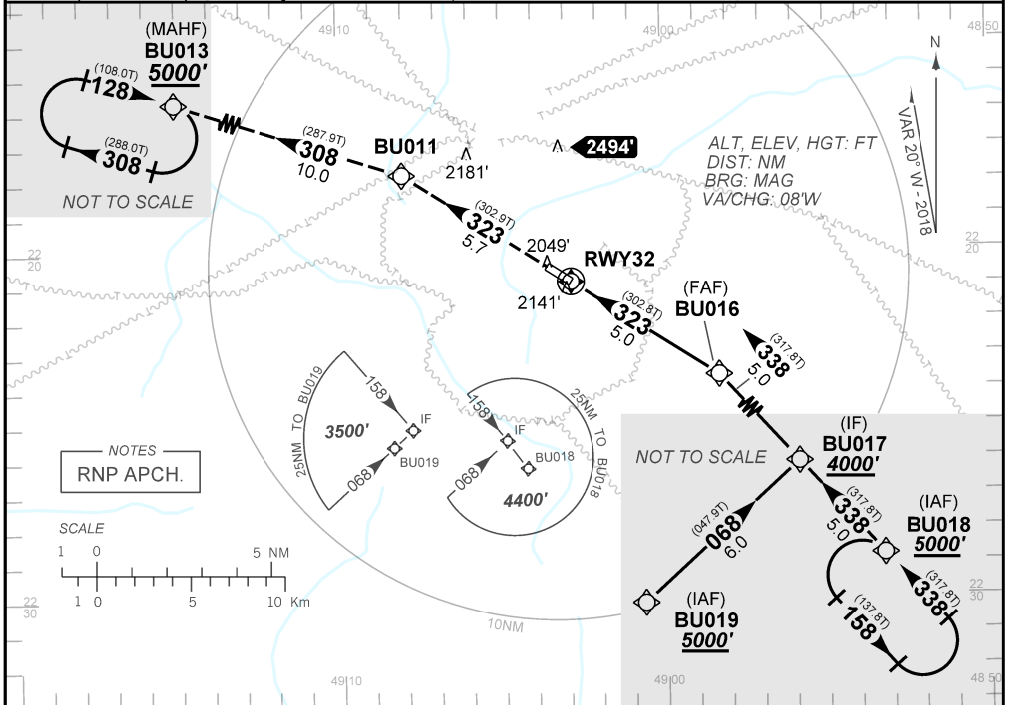
ATIS <b>127.875</b>	APP BAURU <b>121.30</b>	AFIS BAURU <b>121.30</b>	GNDC <b>NIL</b>
N/A	FINAL CRS <b>323°</b>	FAF <b>3670'</b>	LNAV/VNAV DA / (OCH): <b>2330' (310')</b>
		LNAV MDA / (OCH): <b>2420' (400')</b>	

APCH Perdida: Subir para **5000'**, rumo **323** até BU011. Após, curva à **ESQUERDA**, rumo **308** até BU013 para espera.

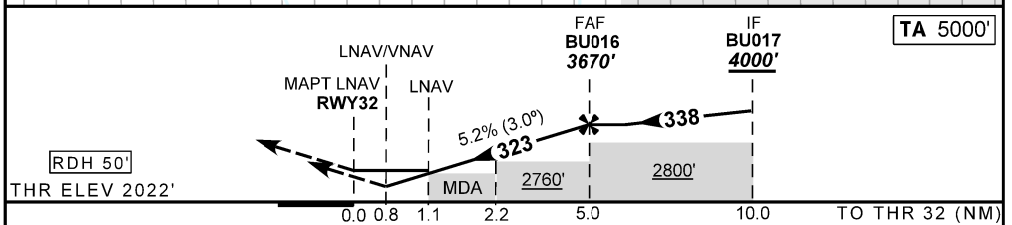
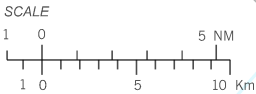
Missed APCH: Climb to **5000'**, course **323** to BU011. Then, turn **LEFT**, course **308** to BU013 for holding.

RMK: 1) Para sistemas não compensados Baro-VNAV, LNAV/VNAV NAO AUTORIZADO abaixo de 5°C ou acima de 40°C.

1) For uncompensated systems Baro-VNAV, LNAV/VNAV NOT AUTHORIZED below 5°C or above 40°C.



NOTES  
RNP APCH.



	RWY32	1.1	2.0	3.0	4.0	BU016	KT	090	110	130	150	170	190
	ALT	2420	2709	3027	3346	3670	FPM	500	600	700	800	950	1050
	(HGT)	400	687	1005	1324	1650	FAF-MAPT	NA					

STRAIGHT-IN	CAT	A	B	C	D	E
	DA / (OCH)	2330' / (310')				
	ALS/NO ALS/ RVR ALS (m)	NIL / 1600 / NIL				
	MDA / (OCH)	2420' / (400')				
LNAV	ALS/NO ALS/ RVR ALS (m)	NIL / 1600 / NIL			NIL / 1800 / NIL	
	MDA / (OCH)	NA				
CIRCLING	MDA / (OCH)	NA				
	VIS (m)	NA				

CHANGES: DIST.