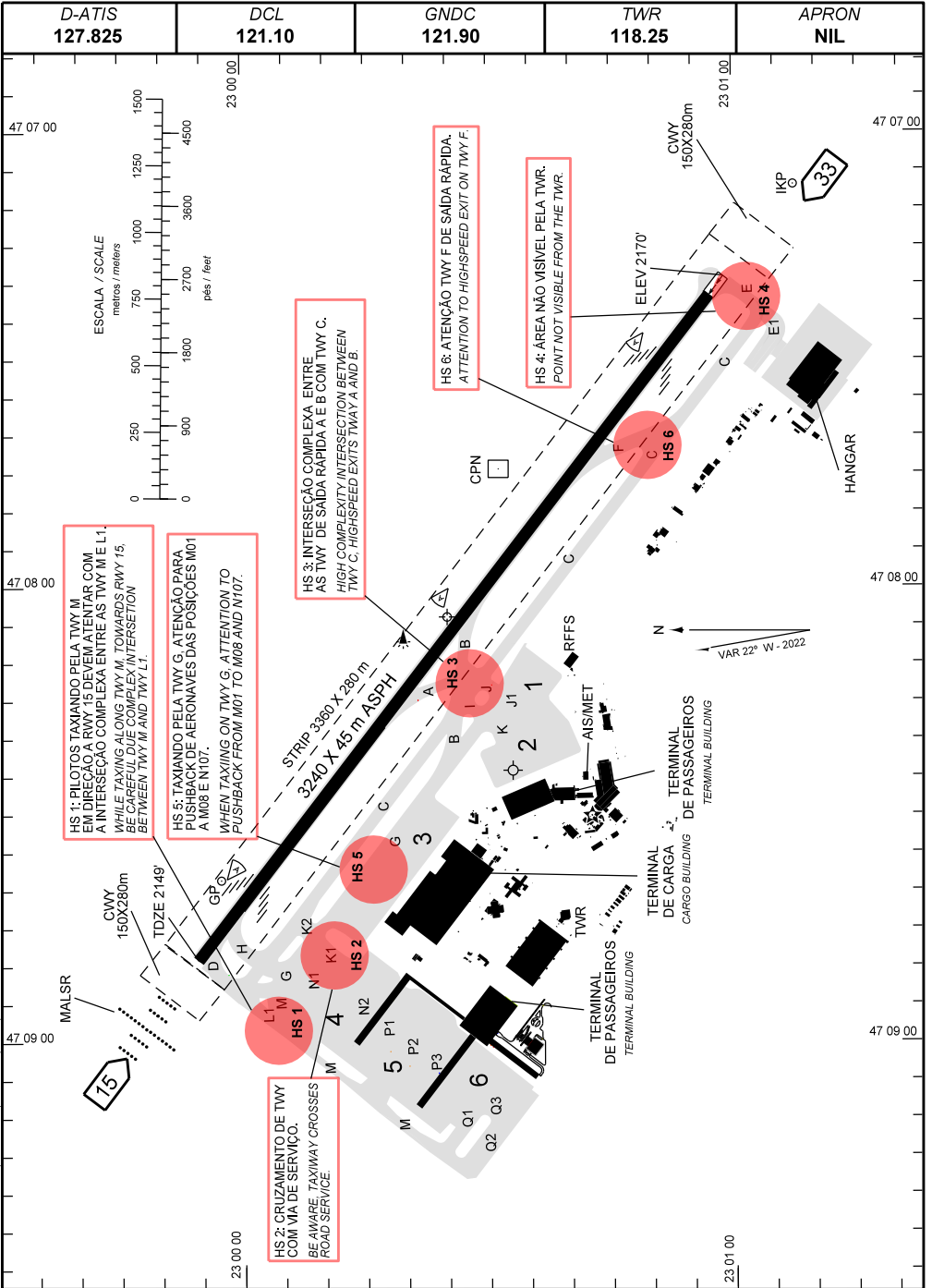


AD ELEV: 2170'

ARP S23 00 25 W047 08 04



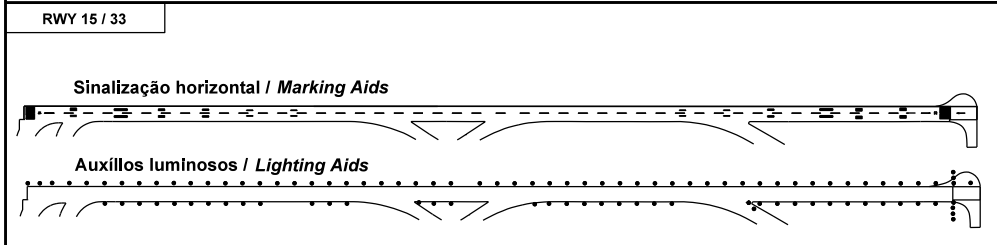
CHANGES: BRG. MAG. DECAVAR. LAYOUT. TWY. VOR.

**ADC - SBKP: INFORMAÇÕES COMPLEMENTARES / COMPLEMENTARY INFORMATION**

CARACTERÍSTICAS FÍSICAS / PHYSICAL CHARACTERISTICS											
PISTA RUNWAY				DIMENSÕES(m) DIMENSIONS(m)				PCN	TIPO DE SUPERFÍCIE SURFACE KIND		
RWY	BRG MAG	Tipo Type	RCD	RWY	SWY	CWY	STRIP	RWY	RWY	SWY	
a	b	c	d	e	f	g	h	i	j	k	
15	149	CAT-I	4E	3240x45		150x280	3360 x 280	56/F/B/X/T	ASPH		
33	329	NPA	4E			150x280					

DISTÂNCIAS DECLARADAS, AUXÍLIOS VISUAIS E COORDENADAS DAS CABECEIRAS DECLARED DISTANCES, VISUAL AIDS AND THRESHOLD COORDINATES								
RWY	TORA(m)	TODA(m)	ASDA(m)	LDA(m)	AUXÍLIOS AIDS	ALTURA GEODAL(m) GEOID HEIGHT(m)	COORDENADAS COORDINATES	
15	3150	3390	3150	3150	MALSR / PAPI	- 4,36	S22 59 55 W047 08 49	
33	3240	3390	3240	3150	PAPI	- 4,26	S23 00 59 W047 07 19	

**SERVIÇO DE SALVAMENTO E CONTRAINCÊNDIO / RESCUE AND FIRE FIGHTING SERVICE: RFFS REQ - 10**



**RMK:**

- 1) MEHT: PAPI RWY15 - 62FT
- MEHT: PAPI RWY33 - 65FT

CHANGES: BRG MAG, DEC/VAR, LAYOUT, ITWY, VOR.