

STANDARD DEPARTURE CHART
INSTRUMENT (SID)

ARACAJU / Santa Maria, INTL (SBAR)

RWY 30

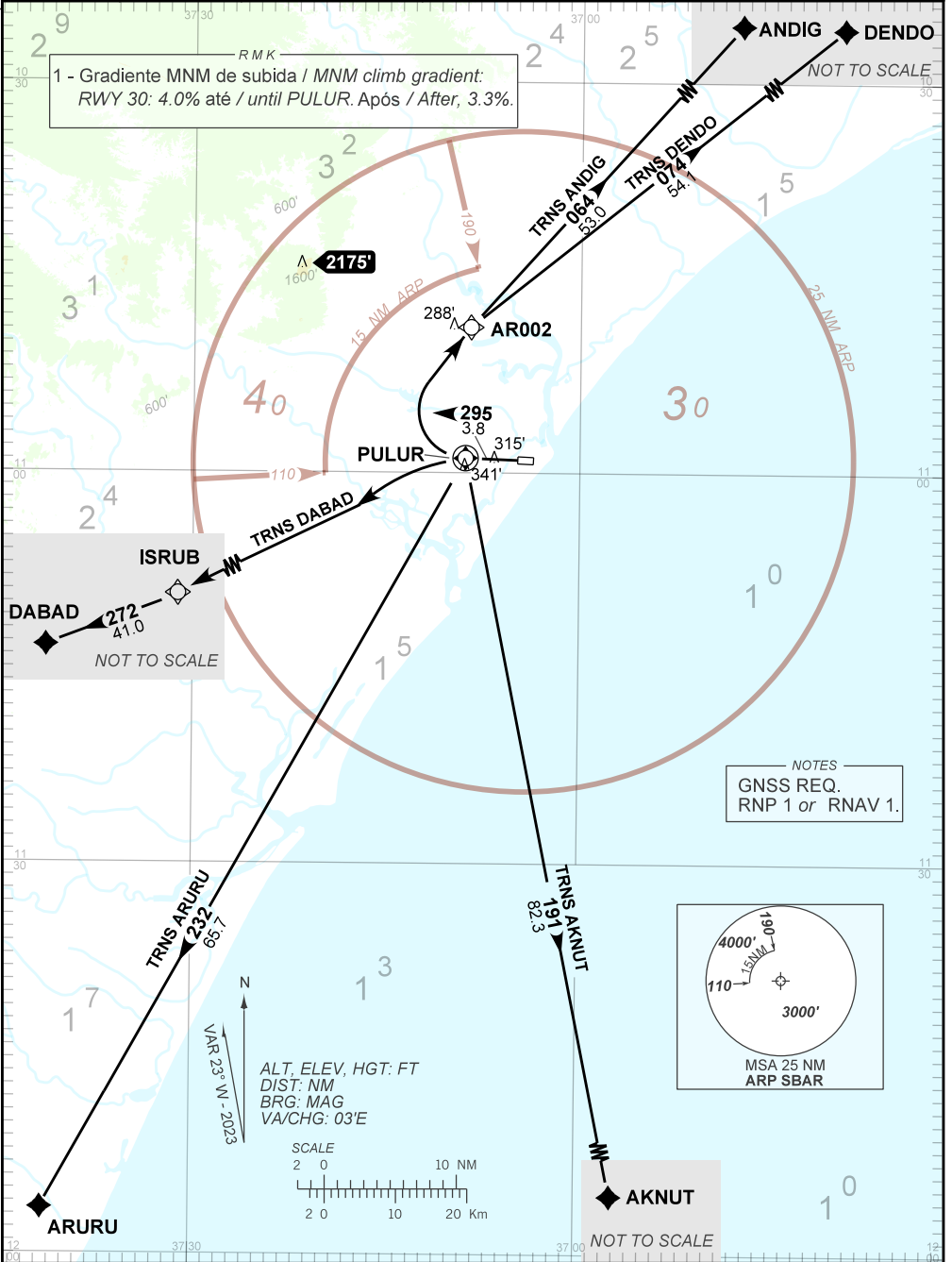
AD ELEV: 23'

RNAV PULUR 2A

TA 4000'	ATIS NIL	TWR ARACAJU 118.10 118.80	APP ARACAJU 129.25 120.30	ACC RECIFE 125.45 126.85 133.65 134.50
----------	----------	---------------------------	---------------------------	--

DEPARTAMENTO DE CONTROLE DO ESPAÇO AÉREO

RMK
1 - Gradiente MNM de subida / MNM climb gradient:
RWY 30: 4.0% até / until PULUR. Após / After, 3.3%.



CHANGES: NIL

AIRAC AMDT 2502A1 20 FEB 25.

SBAR_SID_00K 1/1
SID RNAV PULUR 2A RWY 30