

**INSTRUMENT APPROACH
CHART (IAC)**

MACEIÓ / Zumbi dos Palmares, INTL (SBMO)

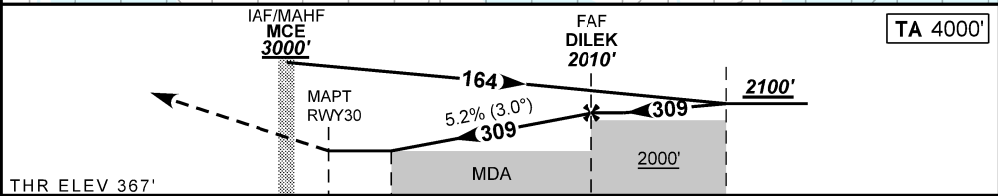
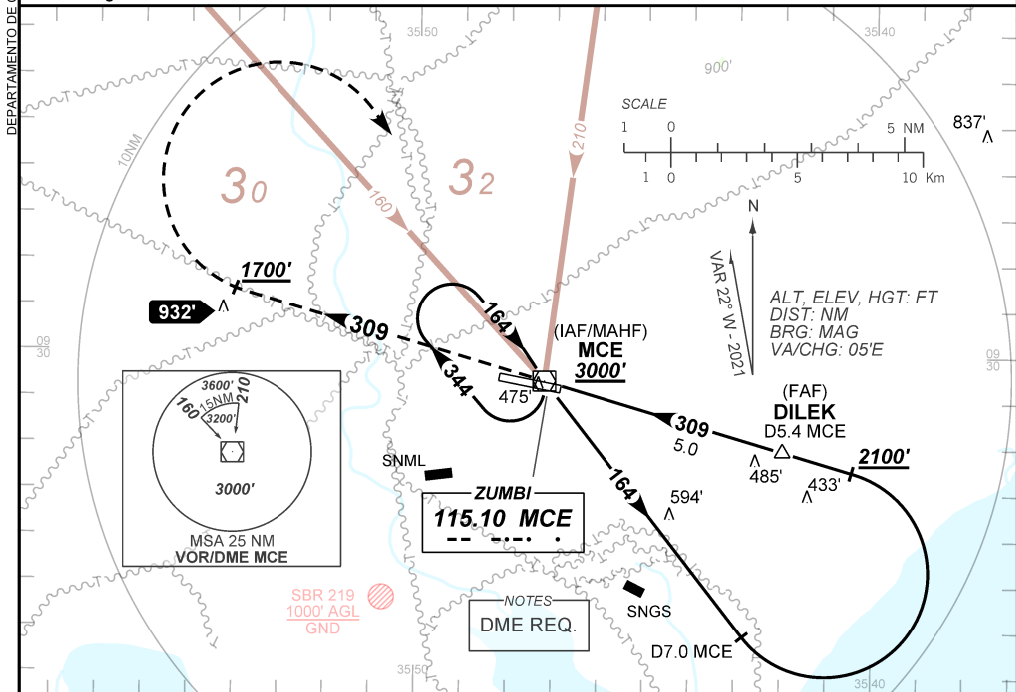
AD ELEV: 388'

VOR Y RWY 30

D-ATIS NIL	APP MACEIÓ 119.25 128.90		TWR MACEIÓ 118.00 118.25	GNDC NIL
VOR MCE 115.10 MHz	FINAL CRS 309°	FAF: 2010'	N/A	VOR MDA / (OCH): 850' / (490')

APCH Perdida: Subir para **3000'**. Manter RDL **309** do VOR MCE até **1700'**. Após, curvar à DIREITA direto VOR MCE para espera.

Missed APCH: Climb to **3000'**. Maintain **309** RDL MCE VOR until **1700'**. After, turn RIGHT direct to MCE VOR for holding.



	0.0	1.4	5.0	6.6	TO THR 30 (NM)
	0.4	1.8	5.4	7.0	TO MCE (DME)

RWY30	1.4	2.0	3.0	4.0	DILEK	Ground Speed (KT)	090	110	130	150	170	190
ALT	850	1054	1372	1691	2010	FPM	500	600	700	800	900	NA
(HGT)	490	687	1005	1324	1643	FAF-MAPT	NA					

STRAIGHT-IN	CAT	A	B	C	D	E
VOR	MDA / (OCH)	850' / (490')				
	ALS/NO ALS/ RVR ALS (m)	NIL / 1600 / NIL		NIL / 2300 / NIL		
CIRCLING	MDA / (OCH)	NA				
	VIS (m)					

CHANGES: DIST.