

**INSTRUMENT APPROACH  
CHART (IAC)**

**GUAJARÁ-MIRIM / Guajará-Mirim (SBGM)**

**AD ELEV: 479'**

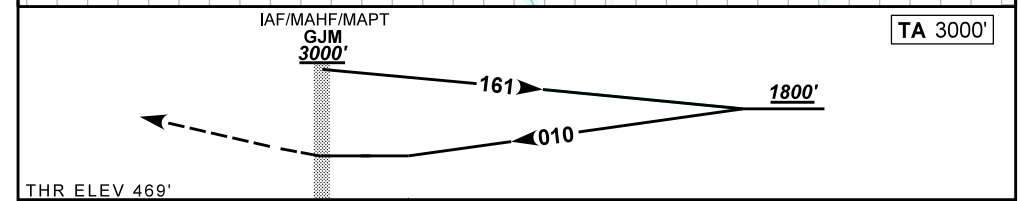
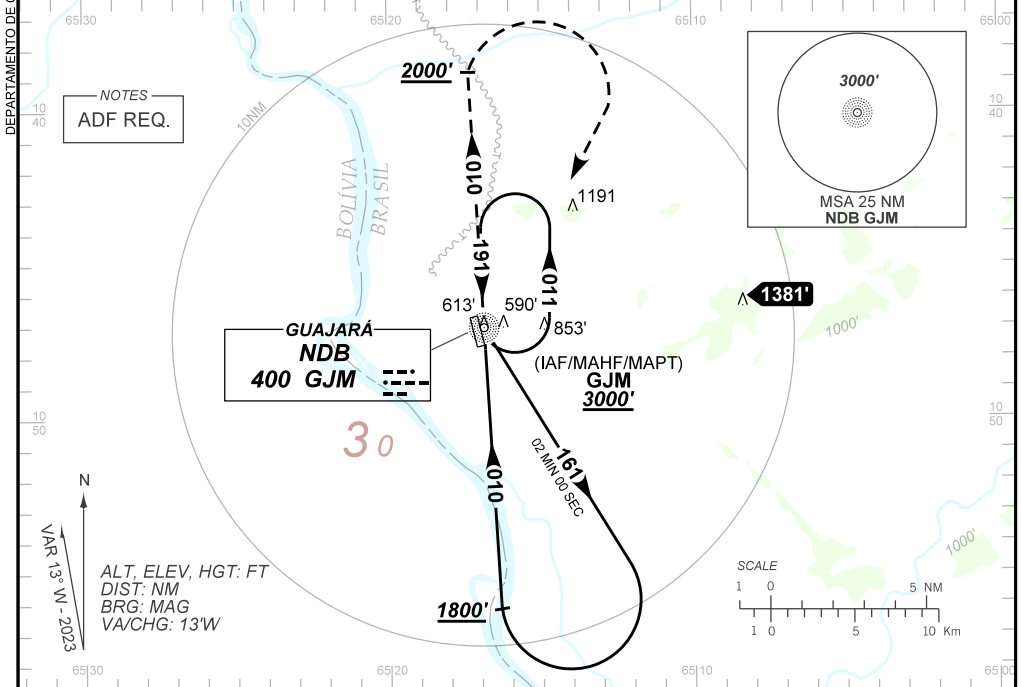
**NDB RWY 35**

ATIS NIL	APP NIL	AFIS GUAJARÁ-MIRIM 125.90	GNDC NIL
-------------	------------	------------------------------	-------------

NDB GJM 400 KHz	FINAL CRS 010°	N/A	N/A	NDB MDA / (OCH): <b>950' / (480')</b>
--------------------	-------------------	-----	-----	--

APCH Perdida: Subir para **3000'**. Manter QDR **010** do NDB GJM até **2000'**. Após, curvar à DIREITA direto NDB GJM para espera.

Missed APCH: Climb to **3000'**. Maintain QDR **010** GJM NDB until **2000'**. After, turn RIGHT direct GJM NDB for holding.



RWY35	NIL	Ground Speed (KT)	090	110	130	150	170	190
ALT	NIL	FPM	650			NA		
(HGT)	NIL	FAF-MAPT	NA					

STRAIGHT-IN	CAT	A	B	C	D	E
NDB	MDA / (OCH)	950' / (480')				NA
	ALS/NO ALS/ RVR ALS (m)	NIL / 1600 / NIL		NIL / 2200 / NIL		
CIRCLING	MDA / (OCH)	NA				
	VIS (m)	NA				