

**INSTRUMENT APPROACH CHART (IAC)**

**CANOAS / Campo Nossa Senhora de Fátima, MIL (SBCO)**

**NAV APV RWY 31**

**AD ELEV: 26'**

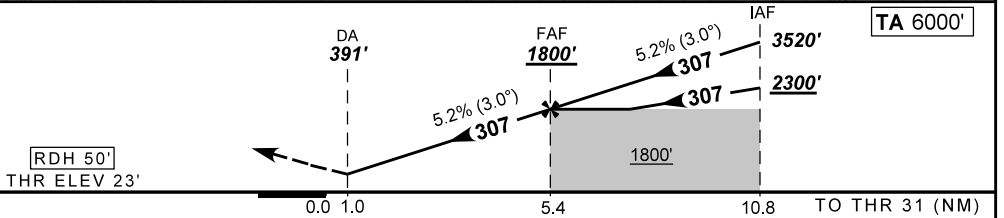
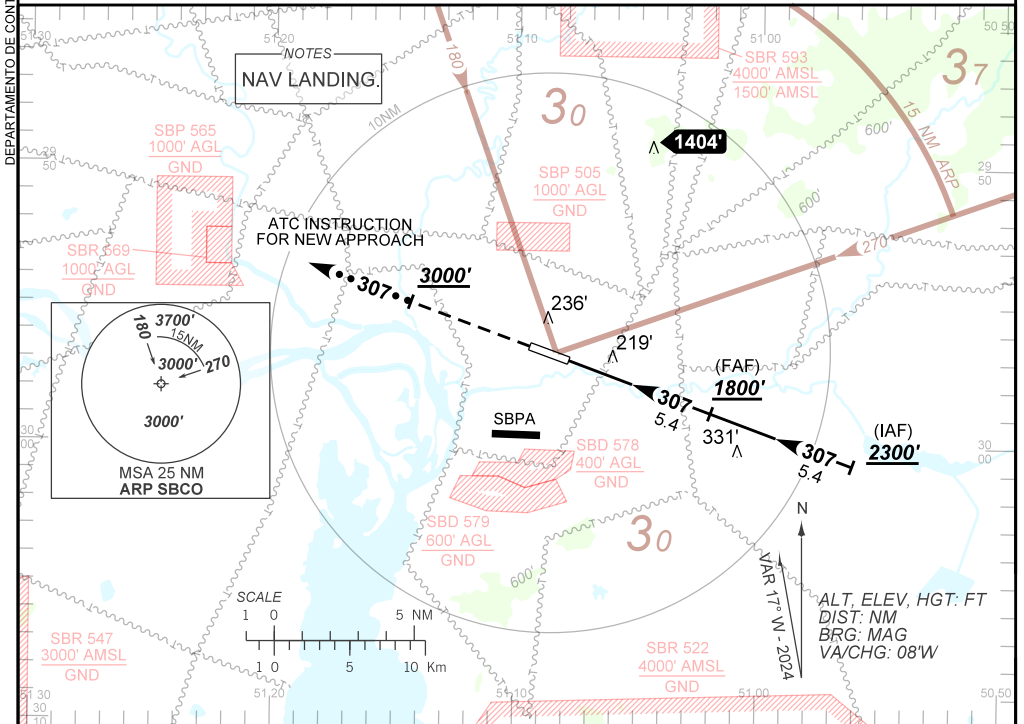
**USO EXCLUSIVO F-39  
F-39 USE ONLY**

(ONLY CAT E)

ATIS NIL	APP PALEGRE 119.00 120.10 120.55 128.90		TWR CANOAS 118.50 122.80 (MIL)	GNDC CANOAS 121.70
-------------	--	--	-----------------------------------	-----------------------

TEMP LNAV/VNAV MIN -10°C / MAX 50°C	FINAL CRS 307°	FAF: 1800'	NAV APV DA / (OCH): 391' / (368')	N/A
--	-------------------	---------------	--------------------------------------	-----

APCH Perdida: Subir para **3000'** no rumo **307** e aguardar instruções ATC.  
Missed APCH: Climb to **3000'** on course **307** and expect further ATC instructions.



RWY31	2.0	3.0	4.0	FAF			Ground Speed (KT)	090	110	130	150	170	190
ALT	710	1028	1347	1800			FPM	500	600	700	800	900	1000
(HGT)	687	1005	1324	1777			FAF-MAPT	NIL					

STRAIGHT-IN	CAT	ONLY CAT E
	NAV APV	DA / (OCH)
	ALS/NO ALS/ RVR ALS (m)	NIL / 1700 / NIL
		NA
CIRCLING	MDA / (OCH)	NA
	VIS (m)	NA

AIRAC AMDT 2408A1 08 AUG 24  
USO EXCLUSIVO F-39 / F-39 USE ONLY

SBCO\_IAC\_02T 1/1  
IAC NAV APV RWY 31

CHANGES: NEW CHART.

DEPARTAMENTO DE CONTROLE DO ESPAÇO AÉREO