

**INSTRUMENT APPROACH  
CHART (IAC)**

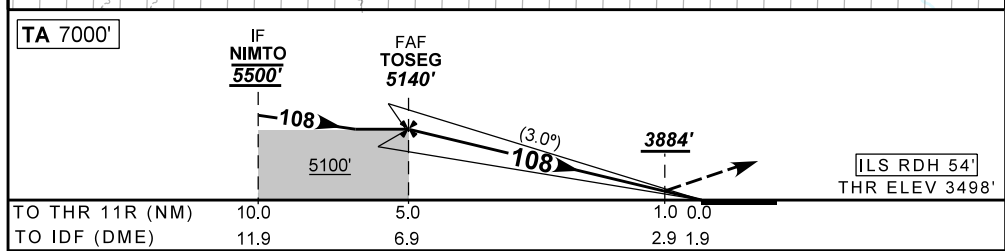
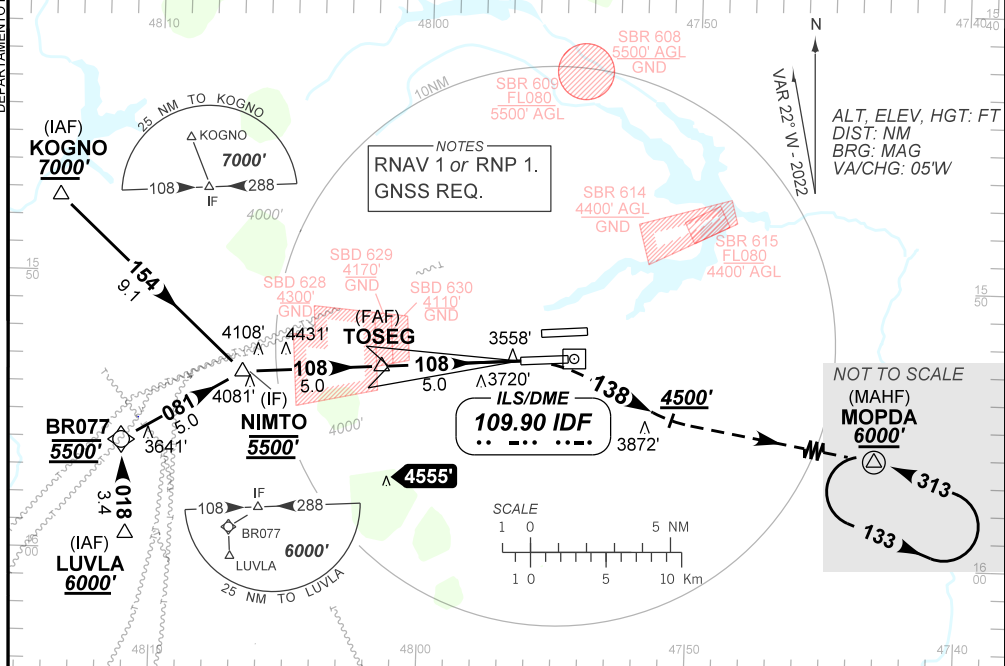
**BRASÍLIA / Pres. Juscelino Kubitschek, INTL (SBBR)**

**AD ELEV: 3498'**

**ILS V RWY 11R**

D-ATIS <b>127.80</b>	APP BRASÍLIA <b>119.70 129.60 119.20 120.00</b>		TWR BRASÍLIA <b>118.10 118.45 118.75</b>	GND C BRASÍLIA <b>121.80 121.95</b>
LOC IDF <b>109.90 MHz</b>	FINAL CRS <b>108°</b>	FAF: <b>5140'</b>	CAT I DA / (OCH): <b>3884' / (386')</b>	N/A

APCH Perdida: Subir para **6000'**. Manter proa **138** até **4500'**. Após, curvar à ESQUERDA direto MOPDA para espera.  
 Missed APCH: Climb to **6000'**. Maintain heading **138** until **4500'**. After turn LEFT direct to MOPDA for holding.  
 RMK: Aproximações Paralelas Independentes.  
 Independent Parallel Approaches.



NIL	NIL	RWY 11R	Ground Speed (KT)	090	110	130	150	170	190
NIL	NIL	ALT	FPM	NIL					
NIL	NIL	(HGT)	FAF-MAPT	NIL					

STRAIGHT-IN	CAT	A	B	C	D	E
CAT I	DA / (OCH)	3884' / (386')				
	ALS/NO ALS/ RVR ALS (m)	1100 / 1800 / 1000				
CIRCLING	MDA / (OCH)	NA				
	VIS (m)	NA				

CHANGES: NEW CHART.

DEPARTAMENTO DE CONTROLE DO ESPAÇO AÉREO