

**INSTRUMENT APPROACH
CHART (IAC)**

CANOAS / Campo Nossa Senhora de Fátima, MIL (SBCO)

**USO EXCLUSIVO ACFT MILITARES
MILITARY ACFT ONLY**

PAR Z RWY 13

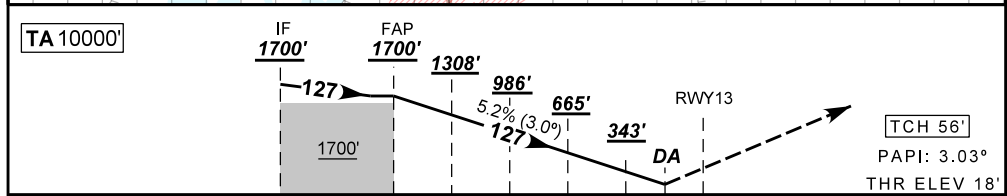
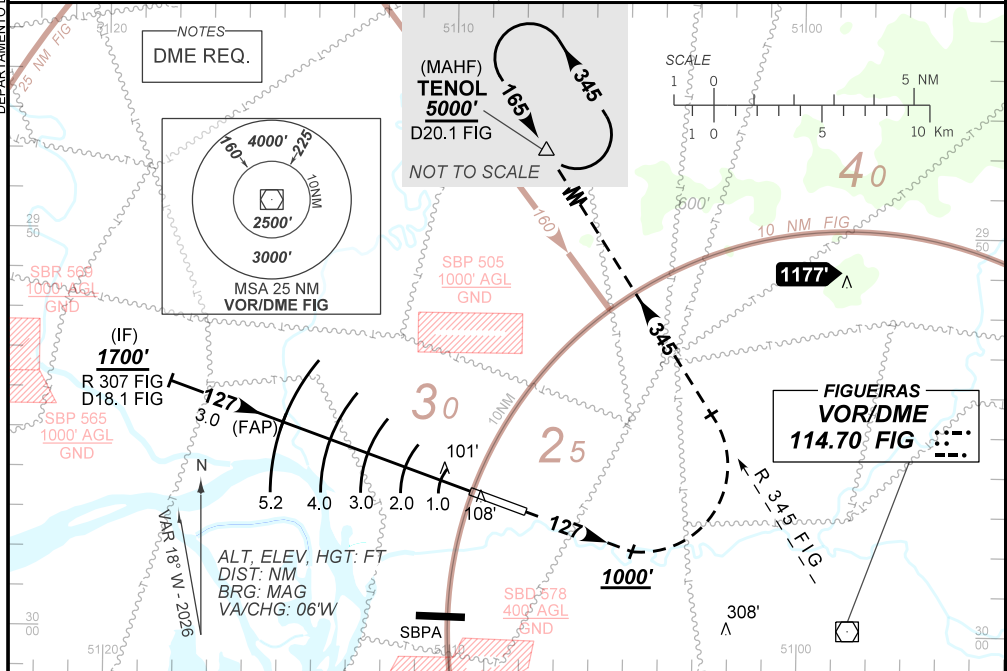
AD ELEV: 26'

ATIS NIL	APP PALEGRE 119.00 120.10 120.55 128.90	PAR CANOAS 129.15 134.80	TWR CANOAS 118.50 122.80 (MIL)	GNDC CANOAS 121.70
N/A	FINAL CRS 127°	FAP: 1700'	PAR DA / (OCH): 288' / (270')	N/A

APCH Perdida: Subir para **5000'**. Manter proa **127** até **1000'**. Após, curvar à ESQUERDA para interceptar a RDL **345** do VOR FIG até TENOL para espera.

Missed APCH: Climb to **5000'**. Maintain heading **127** until **1000'**. After, turn LEFT to intercept **345** RDL FIG VOR until TENOL for holding.

DEPARTAMENTO DE CONTROLE DO ESPAÇO AÉREO



TO TDZ 13 (NM) 8.2 5.2 4.0 3.0 2.0 1.0 0.8 0.2

FAP	4.0	3.0	2.0	1.0	0.8	TDZ13	Ground Speed (KT)	090	110	130	150	170	190
1700	1308	986	665	343	288	ALT	FPM	500	600	700	800	900	1000
1682	1290	968	647	325	270	(HGT)	FAF-MAPT	NA					

STRAIGHT-IN	CAT	A	B	C	D	E
	DA / (OCH)	288' / (270')				
PAR	ALS/NO ALS/ RVR ALS (m)	800 / 1300 / NIL				
	MDA / (OCH)	NA				
CIRCLING	VIS (m)	NA				

CHANGES: PROC. TA. VAR.

AIRAC AMDT 2604A1 16 APR 26

USO EXCLUSIVO ACFT MILITARES / MILITARY ACFT ONLY

**SBCO_IAC_01V 1/1
IAC PAR Z RWY 13**