

INSTRUMENT APPROACH
CHART (IAC)

NATAL / Campo Augusto Severo, MIL (SBNT)

USO EXCLUSIVO ACFT MILITARES
MILITARY ACFT ONLY

VOR Z RWY 16L

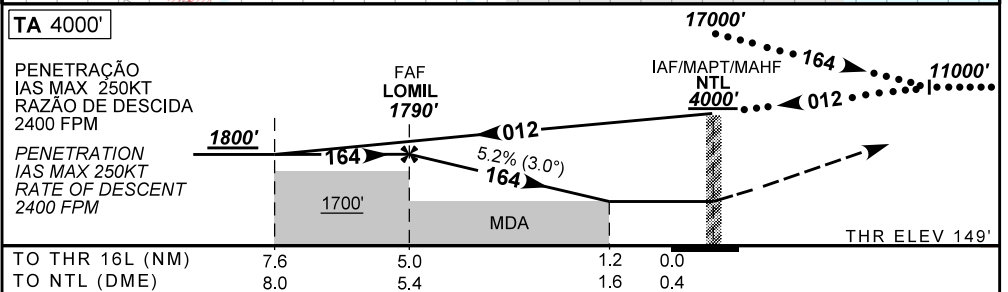
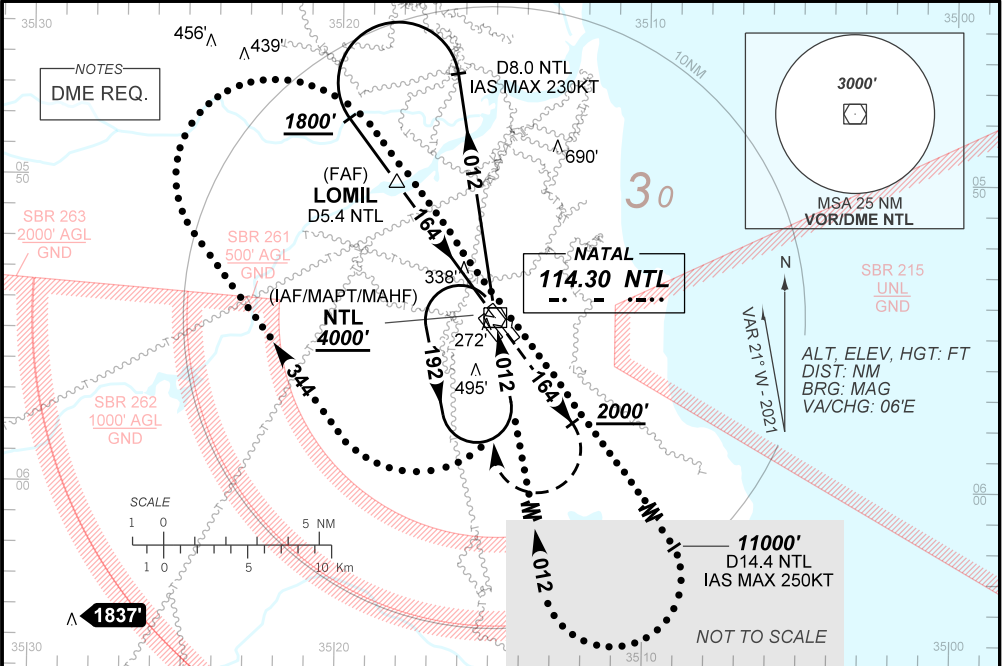
AD ELEV: 171'

D-ATIS 132.65	APP NATAL 119.30 119.65 120.65 129.80			TWR NATAL 118.70 122.80	GNDC NATAL 121.90
VOR NTL 114.30 MHz	FINAL CRS 164°	FAF: 1790'	N/A	VOR MDA / (OCH): 590' / (450')	

APCH Perdida: Subir para 4000'. Manter a RDL 164 do VOR NTL até 2000'. Após, curvar à DIREITA direito VOR NTL para esquerda. Missed APCH: Climb to 4000'. Maintain 164 RDL NTL VOR until 2000'. After, turn RIGHT direct to NTL VOR for holding.

RMK: Proibido circular setores N (norte), NE (nordeste) e E (leste) do AD.
Prohibited to circle N (north), NE (northeast) and E (east) sectors from AD.

DEPARTAMENTO DE CONTROLE DO ESPAÇO AÉREO



	LOMIL	4.0	3.0	2.0	1.2	RW16L	Ground Speed (KT)	090	110	130	150	170	190
	1790	1473	1154	836	590	ALT	FPM	500	600	700	800	900	1000
	1641	1324	1005	687	450	(HGT)	FAF-MAPT	NA					

STRAIGHT-IN	CAT	A					B					C					D					E																								
		MDA / (OCH)					590' / (450')					NIL / 1600 / NIL					NIL / 2100 / NIL					NIL / 2100 / NIL																								
VOR	ALS/NO ALS/ RVR ALS (m)																				NIL / 1600 / NIL										NIL / 2100 / NIL															
	MDA / (OCH)		650' / (490')					800' / (640')					910' / (750')					980' / (820')					1190' / (1030')																							
CIRCLING		VIS (m)																				1600					1600					3600					4400					4800				

AIAC AMDT 2202A1 24 FEB 22

USO EXCLUSIVO ACFT MILITARES / MILITARY ACFT ONLY

SBNT_IAC_01W 1/1
IAC VOR Z RWY 16L

CHANGES: IDENT.