

**INSTRUMENT APPROACH  
CHART (IAC)**

**GAVIÃO PEIXOTO / EMBRAER, Unidade Gavião Peixoto (SBGP)**

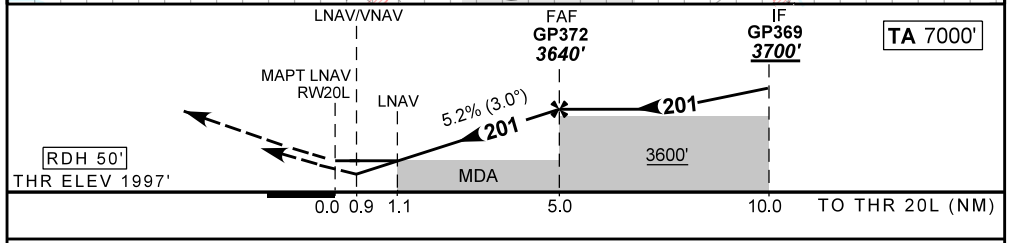
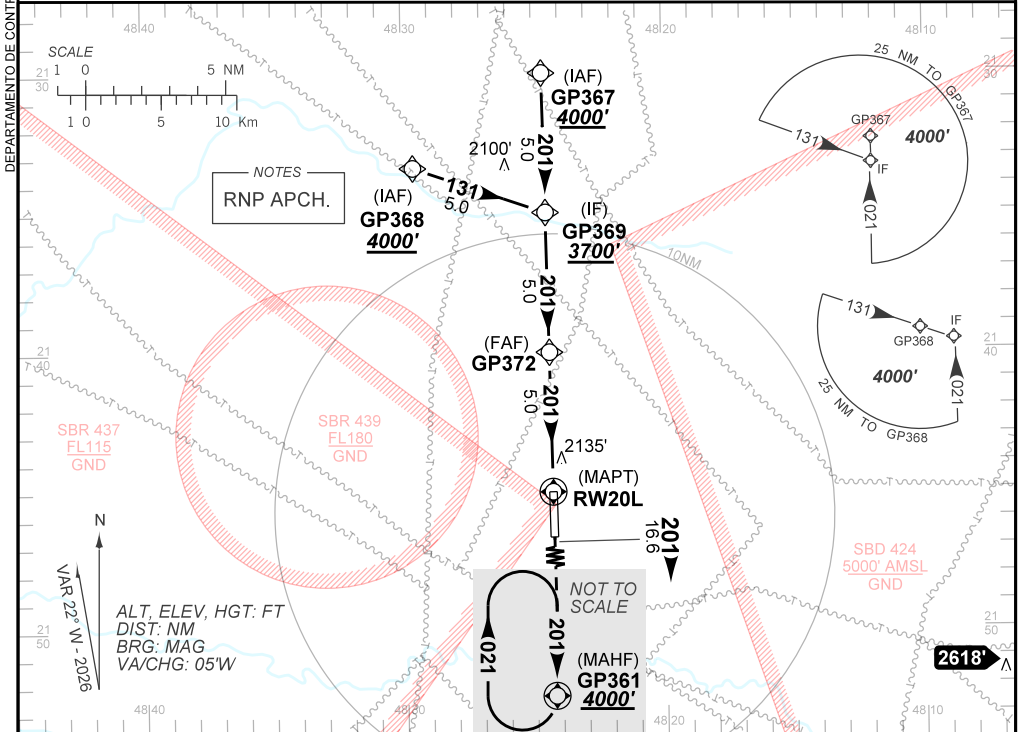
**AD ELEV: 1998'**

**RNP U RWY 20L**

ATIS <b>NIL</b>	APP ACADEMIA <b>120.10 122.40</b>	AFIS GAVIÃO <b>118.95</b>
--------------------	--------------------------------------	------------------------------

TEMP LNAV/VNAV <b>MIN -10°C / MAX 50°C</b>	FINAL CRS <b>201°</b>	FAF: <b>3640'</b>	LNAV/VNAV <b>DA / (OCH): 2340' / (343')</b>	LNAV <b>MDA / (OCH): 2400' / (410')</b>
---	--------------------------	----------------------	--	--

APCH Perdida: Subir para **4000'** no rumo **201** até GP361 para espera.  
Missed APCH: Climb to **4000'** on course **201** until GP361 for holding.



RWY20L	1.1	2.0	3.0	4.0	GP372		Ground Speed (KT)	090	110	130	150	170	190
ALT	2400	2684	3002	3321	3640		FPM	500	600	700	800	900	1000
(HGT)	410	687	1005	1324	1643		FAF-MAPT	NIL					

STRAIGHT-IN	CAT	A	B	C	D	E
	DA / (OCH)	2340' / (343')				NA
LNAV/VNAV	ALS/NO ALS/ RVR ALS (m)	NIL / 1600 / NIL				NA
	MDA / (OCH)	2400' / (410')				
LNAV	ALS/NO ALS/ RVR ALS (m)	NIL / 1600 / NIL		NIL / 1900 / NIL		
	MDA / (OCH)	NA				
CIRCLING	MDA / (OCH)	NA				
	VIS (m)	NA				

CHANGES: HDG, LAYOUT, PROC, VAR.