

**INSTRUMENT APPROACH  
CHART (IAC)**

**MAXARANGUAPE / Maxaranguape, MIL (SNXX)**

**AD ELEV: 305'**

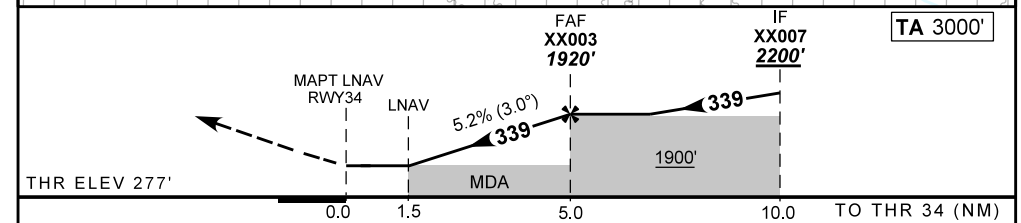
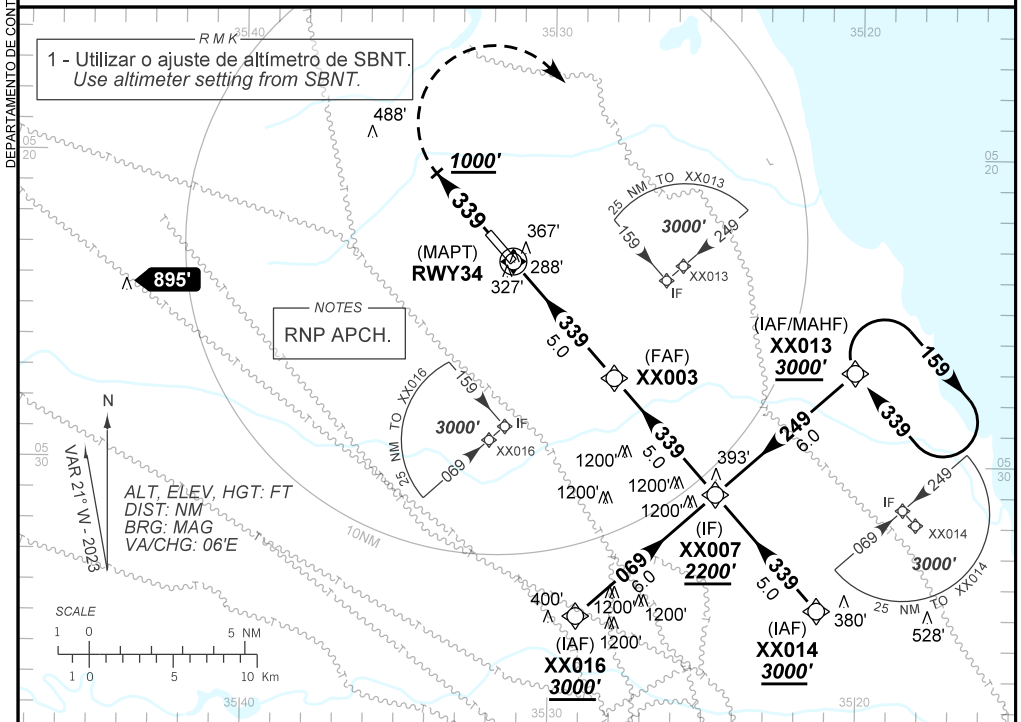
**USO EXCLUSIVO ACFT MILITARES  
MILITARY ACFT ONLY**

**RNP RWY 34**

ATIS NIL	APP NATAL 119.30 119.65	TWR NIL	GNDC NIL
-------------	----------------------------	------------	-------------

N/A	FINAL CRS 339°	FAF: 1920'	N/A	LNAV RASS (SBNT) MDA / (OCH): <b>810' / (530')</b>
-----	-------------------	---------------	-----	---

APCH Perdida: Subir para **3000'**. Manter rumo **339** até **1000'**. Após, curvar à DIREITA direto XX013 para espera.  
Missed APCH: Climb to **3000'**. Maintain course **339** until **1000'**. After, turn RIGHT direct XX013 for holding.



RWY34	1.5	2.0	3.0	4.0	XX003	Ground Speed (KT)	090	110	130	150	170	190
ALT	810	964	1282	1601	1920	FPM	500	600	700	800	900	1000
(HGT)	530	687	1005	1324	1643	FAF-MAPT	NIL					

STRAIGHT-IN	CAT	A	B	C	D	E
	LNAV RASS (SBNT)	MDA / (OCH) <b>810' / (530')</b>				
CIRCLING	MDA / (OCH)	NIL / 1600 / NIL				
	VIS (m)	NIL / 2400 / NIL				
		NA				

AIRAC AMDT 2305A1 18 MAY 23

**USO EXCLUSIVO ACFT MILITARES / MILITARY ACFT ONLY**

**SNXX\_IAC\_00D 1/1  
IAC RNP RWY 34**

CHANGES: NEW CHART.

DEPARTAMENTO DE CONTROLE DO ESPAÇO AEREO