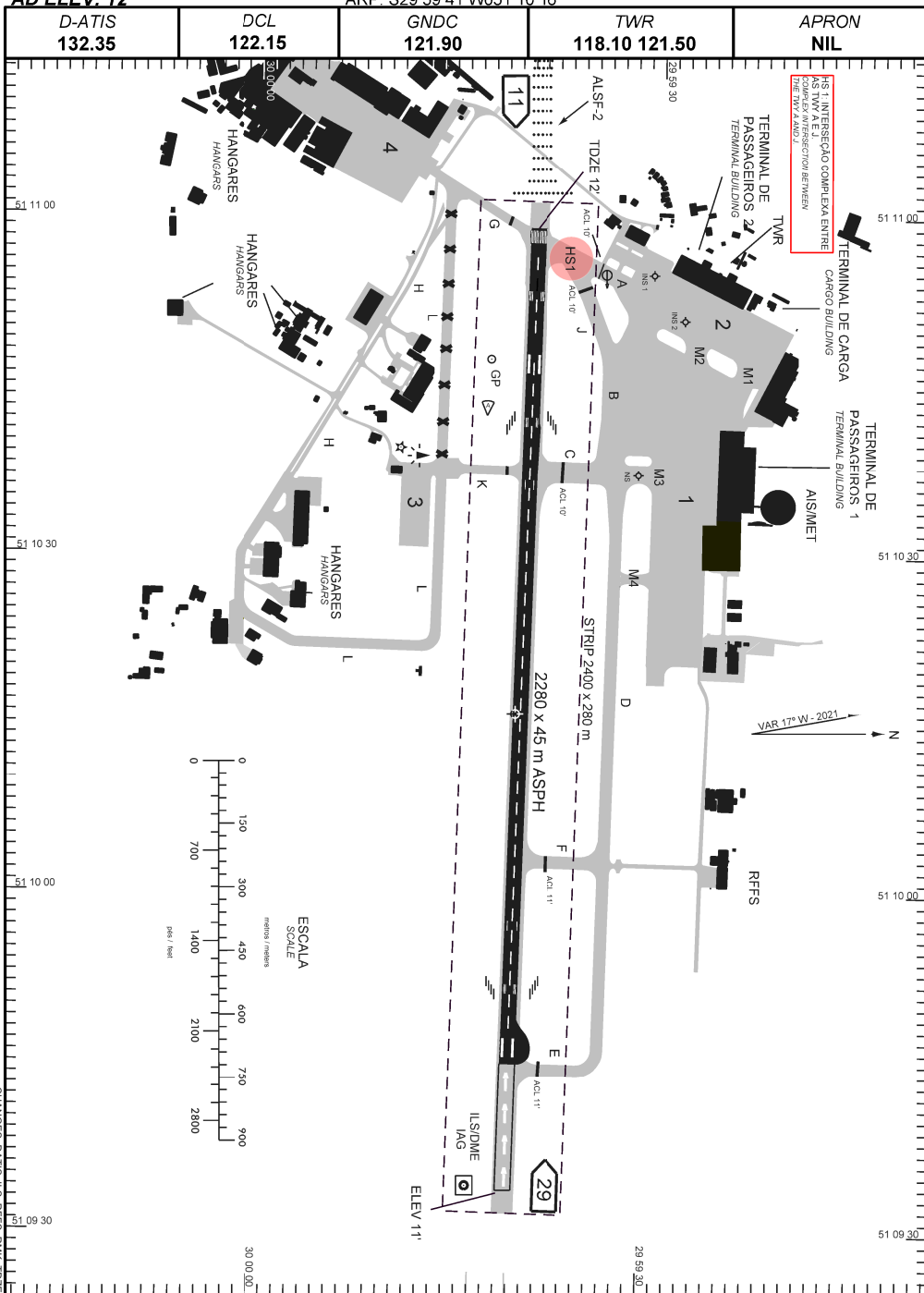
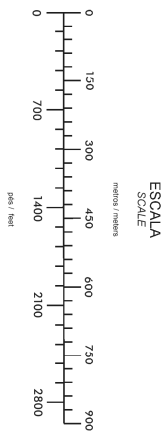


AD ELEV: 12'

ARP: S29 59 41 W051 10 16


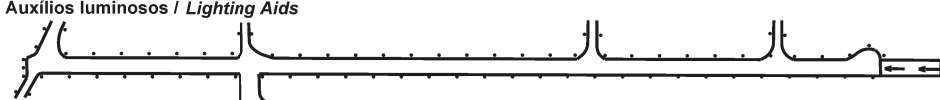


NS 1 INTERSEÇÃO COMPLEXA ENTRE NS 10V E NS 11V. COMPLEX INTERSECTION BETWEEN NS 10V AND NS 11V.



CHANGES DATES: ILS, REFS, RWK, TDZE

**ADC - SBPA: INFORMAÇÕES COMPLEMENTARES / COMPLEMENTARY INFORMATION**

CARACTERÍSTICAS FÍSICAS / PHYSICAL CHARACTERISTICS											
PISTA RUNWAY				DIMENSÕES(m) DIMENSIONS(m)				PCN	TIPO DE SUPERFÍCIE SURFACE KIND		
RWY	BRG MAG	Tipo Type	RCD	RWY	SWY	CWY	STRIP	RWY	RWY	SWY	
a	b	c	d	e	f	g	h	i	j	k	
11	108	PA 2	4E	2280x45			2400 x 280	74/F/A/X/T	ASPH		
29	288	NPA	4E								
DISTÂNCIAS DECLARADAS, AUXÍLIOS VISUAIS E COORDENADAS DAS CABECEIRAS DECLARED DISTANCES, VISUAL AIDS AND THRESHOLD COORDINATES											
RWY	TORA(m)	TODA(m)	ASDA(m)	LDA(m)	AUXÍLIOS / AIDS	ALTURA GEOIDAL(m) GEOID HEIGHT(m)	COORDENADAS COORDINATES				
11	2280	2280	2280	2280	ALSF - 2 / PAPI	4,57	S29 59 40 W051 10 59				
29	2280	2280	2280	2280	PAPI	4,53	S29 59 41 W051 09 34				
SERVIÇO DE SALVAMENTO E CONTRAINCÊNDIO / RESCUE AND FIRE FIGHTING SERVICE: RFFS REQ - 9											
RWY 11/ 29											
<p><b>Sinalização horizontal / Marking Aids</b></p>  <p><b>Auxílios luminosos / Lighting Aids</b></p> 											
<p><b>RMK:</b></p> <ul style="list-style-type: none"> <li>1 - RWY 29 MEHT PAPI: 64'</li> <li>2 - RWY 11 MEHT PAPI: 63'</li> <li>3 - GROOVING : RWY 11/29</li> <li>4 - TWY LIMA CLSD BTN TWY KILO E TWY GOLF DEVIDO AREA DE PROTECAO DA ANTENA DO GLIDE SLOPE TWY LIMA CLSD BTN TWY KILO E TWY GOLF DUE GLIDE SLOPE ANTENNA PROTECTION AREA</li> </ul>											

CHANGES: DATIS, ILS, RFFS, RMK, TDZE