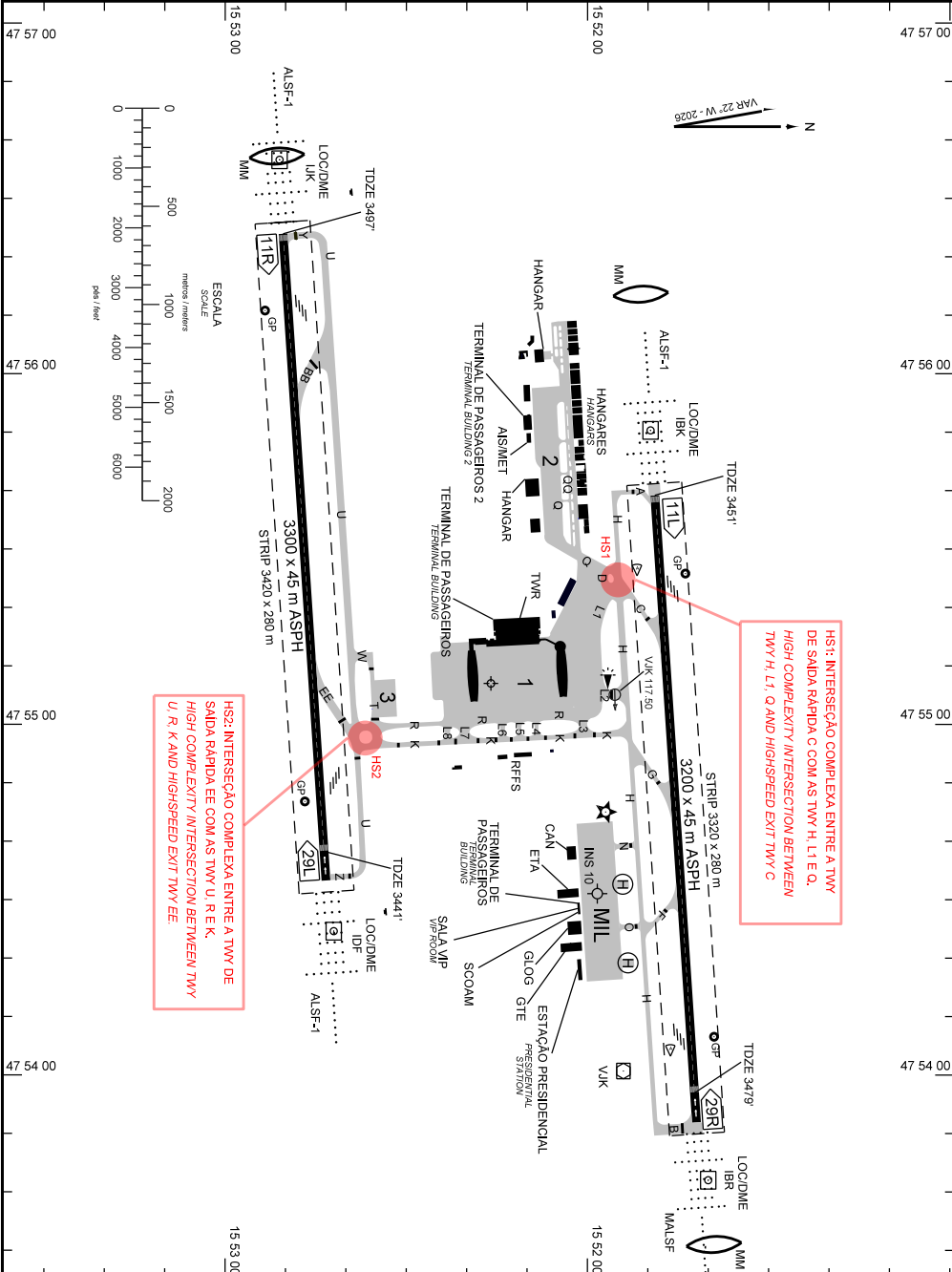


AD ELEV: 3498'

ARP S15 52 16 W047 55 07

D-ATIS 127.80	DCL 121.00	GNDC 121.80 121.95	TWR 118.10 118.45 118.75 121.50	APRON NIL
------------------	---------------	-----------------------	------------------------------------	--------------



HS2: INTERSEÇÃO COMPLEXA ENTRE A TWY DE SAÍDA RÁPIDA EE COM AS TWY U, R E K. HIGH COMPLEXITY INTERSECTION BETWEEN TWY U, R, K AND HIGH-SPEED EXIT TWY EE.

HS1: INTERSEÇÃO COMPLEXA ENTRE A TWY DE SAÍDA RÁPIDA C COM AS TWY H, L1 E O. HIGH COMPLEXITY INTERSECTION BETWEEN TWY H, L1, O AND HIGH-SPEED EXIT TWY C.

CHANGES: POR. THR. COORD.

ADC - SBBR: INFORMAÇÕES COMPLEMENTARES / COMPLEMENTARY INFORMATION

CARACTERÍSTICAS FÍSICAS / PHYSICAL CHARACTERISTICS											
PISTA RUNWAY				DIMENSÕES(m) DIMENSIONS(m)				PCR	TIPO DE SUPERFÍCIE SURFACE KIND		
RWY	BRG MAG	Tipo Type	RCD	RWY	SWY	CWY	STRIP	RWY	RWY	SWY	
a	b	c	d	e	f	g	h	i	j	k	
11L	108	PA-1	4E	3200X45			3320 x 280	770F/A/X/T	ASPH		
29R	288	PA-1	4E								
11R	108	PA-1	4E	3300X45			3420 x 280	770F/A/X/T	ASPH		
29L	288	PA-1	4E								

**DISTÂNCIAS DECLARADAS, AUXÍLIOS VISUAIS E COORDENADAS DAS CABECEIRAS
DECLARED DISTANCES, VISUAL AIDS AND THRESHOLD COORDINATES**

RWY	TORA(m)	TODA(m)	ASDA(m)	LDA(m)	AUXÍLIOS / AIDS		ALTURA GEODAL(m) GEOD HEIGHT(m)	COORDENADAS COORDINATES
11L	3050	3200	3050	3050	PAPI	ALSF-1	- 12.60m	S15 51 49 W047 55 39
29R	3200	3200	3200	3050	PAPI	MALSF	- 12.63m	S15 51 42 W047 53 57
11R	3150	3300	3150	3150	PAPI	ALSF-1	- 12.60m	S15 52 50 W047 56 24
29L	3300	3300	3300	3150	PAPI	ALSF-1	- 12.579m	S15 52 44 W047 54 38

SERVIÇO DE SALVAMENTO E CONTRAINCÊNDIO / RESCUE AND FIRE FIGHTING SERVICE: RFFS REQ - 9

RWY 11L / 29R

Sinalização horizontal / Marking Aids

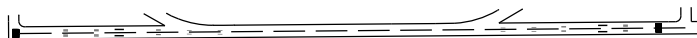


Auxílios luminosos / Lighting Aids

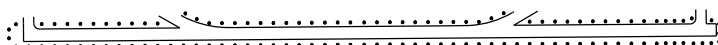


RWY 11R / 29L

Sinalização horizontal / Marking Aids



Auxílios luminosos / Lighting Aids



RMK: 1) MEHT: RWY 11L - 72FT
 RWY 29R - 69FT
 RWY 11R - 65FT
 RWY 29L - 55FT

CHANGES: PCR, THR COORD.