

DEPARTURE CHART  
INSTRUMENT (SID)

CRUZEIRO DO SUL / Cruzeiro do Sul, INTL (SBCZ)

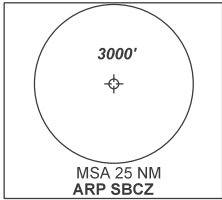
RWY 10 / 28

AD ELEV: 636'

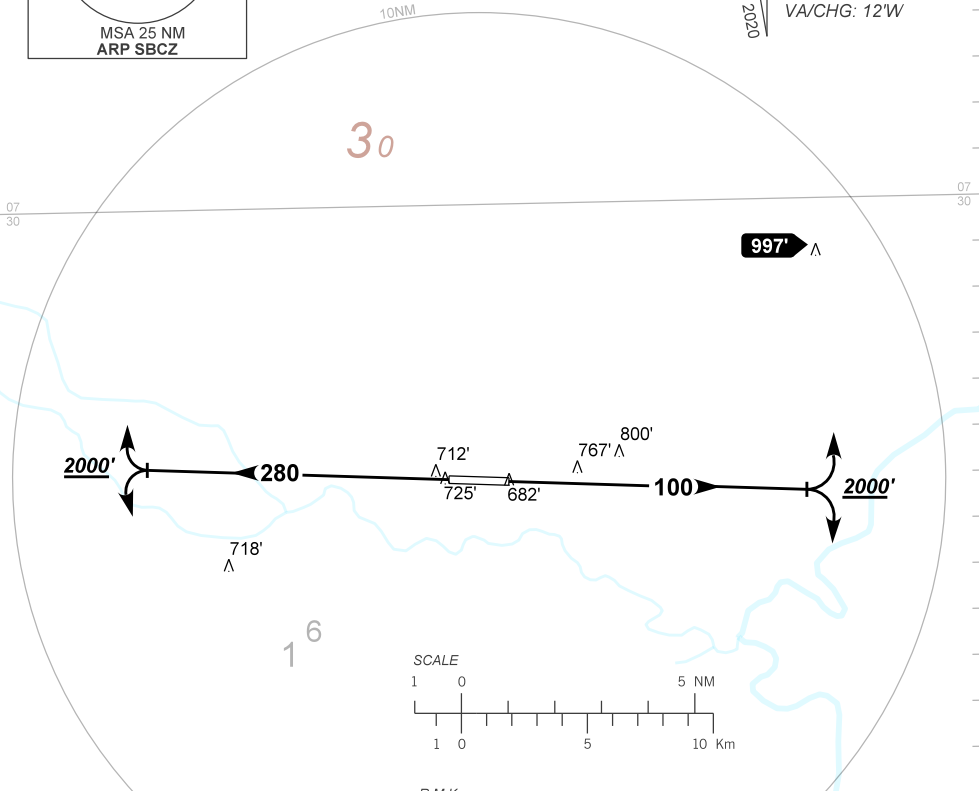
OMNI

TA 3000'	AFIS CRUZEIRO 125.70	APP NIL	ACC AMAZÔNICO 134.15 124.55
----------	-------------------------	------------	--------------------------------

DEPARTAMENTO DE CONTROLE DO ESPAÇO AÉREO



ALT, ELEV, HGT: FT  
DIST: NM  
BRG: MAG  
VA/CHG: 12'W



CHANGES: NEW CHART.

- RMK
- 1 - Obstáculos próximos não considerados para o cálculo do PDG:  
Close-in obstacles not considered for procedure gradient PDG:
- RWY 10: Terreno / Terrain, a partir de / from THR28, AZM 185, DIST 154m, ELEV 682'.  
Terreno / Terrain, a partir de / from THR28, AZM 189, DIST 151m, ELEV 659'.
- RWY 28: Terreno / Terrain, a partir de / from THR10, AZM 006, DIST 139m, ELEV 669'.  
Terreno / Terrain, a partir de / from THR10, AZM 229, DIST 228m, ELEV 725'.  
Terreno / Terrain, a partir de / from THR10, AZM 321, DIST 321m, ELEV 718'.  
Terreno / Terrain, a partir de / from THR10, AZM 241, DIST 341m, ELEV 718'.  
Terreno / Terrain, a partir de / from THR10, AZM 310, DIST 557m, ELEV 718'.  
Terreno / Terrain, a partir de / from THR10, AZM 294, DIST 579m, ELEV 718'.  
Terreno / Terrain, a partir de / from THR10, AZM 302, DIST 1063m, ELEV 735'.