

**INSTRUMENT APPROACH
CHART (IAC)**

PORTO ALEGRE / Salgado Filho, INTL (SBPA)

AD ELEV: 30'

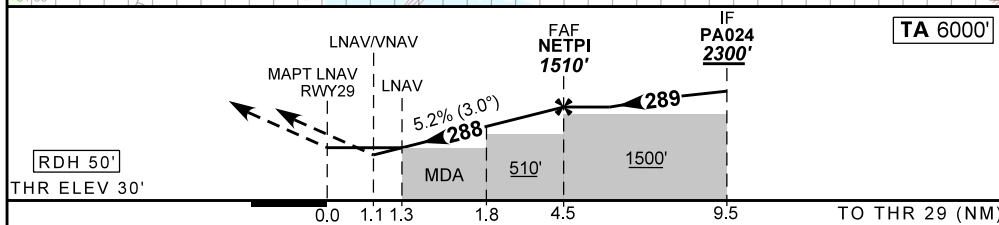
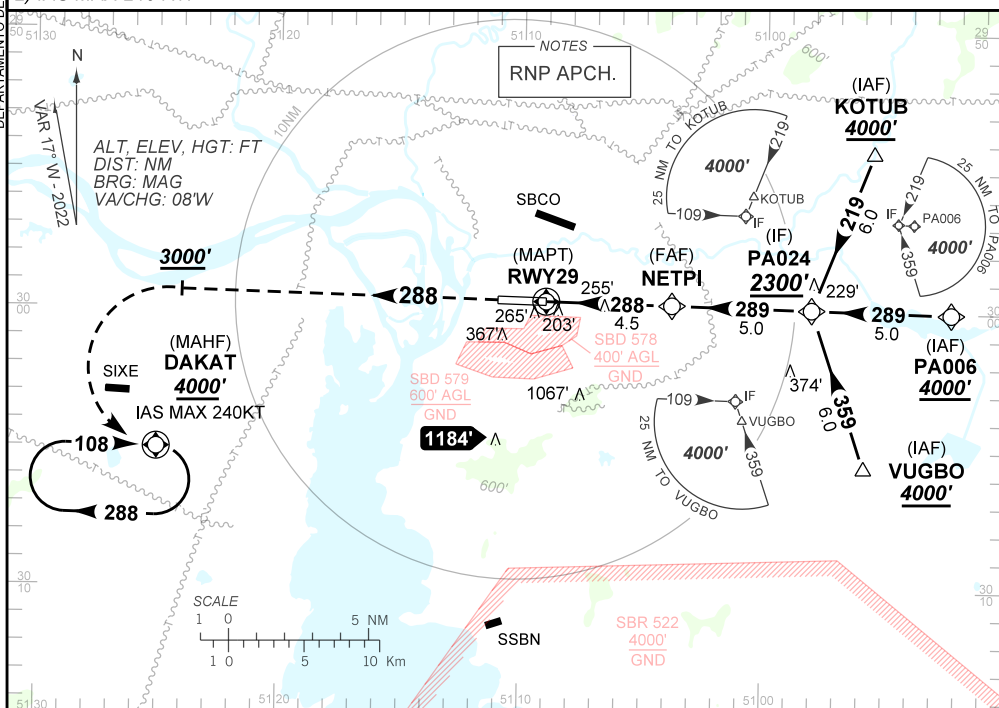
RNP Y RWY 29

D-ATIS 132.35	APP PALEGRE 119.00 120.10 120.55 128.90	TWR PALEGRE 118.10	GNDC PALEGRE 121.90
-------------------------	---	------------------------------	-------------------------------

TEMP LNAV/VNAV MIN -10°C / MAX 50°C	FINAL CRS 288°	FAF: 1510'	LNAV/VNAV DA / (OCH): 417' / (387')	LNAV MDA / (OCH): 500' / (470')
---	--------------------------	----------------------	---	---

APCH Perdida: 1) Subir para **4000'** no rumo **288**. Após **3000'**, curvar à ESQUERDA direto DAKAT para espera.
2) IAS MAX 240KT.

Missed APCH: 1) Climb to **4000'** on course **288**. After **3000'**, turn LEFT direct to DAKAT for holding.
2) IAS MAX 240 KT.



RWY29	1.3	1.8	2.0	3.0	4.0	NETPI	Ground Speed (KT)	090	110	130	150	170	190
ALT	500	653	717	1035	1354	1510	FPM	500	600	700	800	900	1000
(HGT)	470	623	687	1005	1324	1480	FAF-MAPT	NA					

STRAIGHT-IN	CAT	A	B	C	D	E
LNAV/VNAV	DA / (OCH)	417' / (387')				NA
	ALS/NO ALS/ RVR (m)	NIL / 1800 / 1700				
LNAV	MDA / (OCH)	500' / (470')				
	ALS/NO ALS/RVR (m)	NIL / 1800 / 1700		NIL / 2200 / 2000		
CIRCLING	MDA / OCH	NA				
	VIS (m)	NA				

AIRAC AMDT 2206A1 16 JUN 22

SBPA_IAC_01J 1/1
IAC RNP Y RWY 29

CHANGES: AD ELEV, PROC

DEPARTAMENTO DE CONTROLE DO ESPAÇO AÉREO