

INSTRUMENT APPROACH
CHART (IAC)

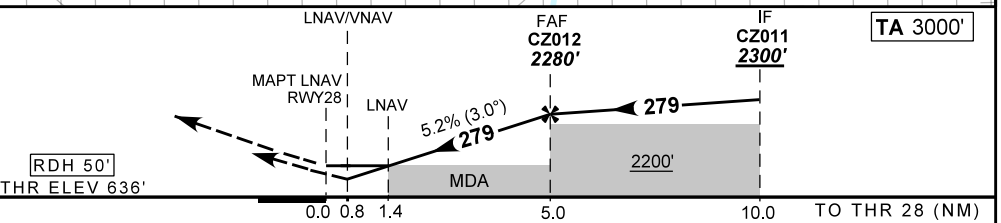
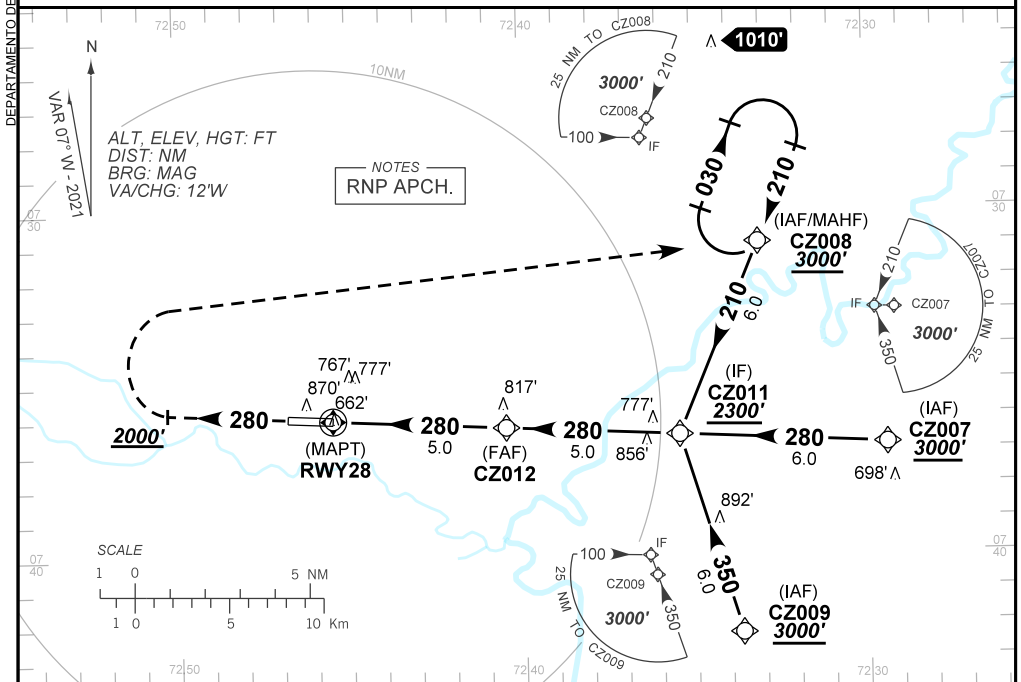
CRUZEIRO DO SUL / Cruzeiro do Sul, INTL (SBCZ)

AD ELEV: 636'

RNP X RWY 28

ATIS NIL	APP NIL	AFIS CRUZEIRO 125.70	GNDC NIL
TEMP LNAV/VNAV MIN 0°C / MAX 50°C	FINAL CRS 280°	FAF: 2280'	LNAV MDA / (OCH): 1120' / (490')
APCH Perdida: Subir para 3000'. Manter proa 280 até 2000'. Após, curvar à DIREITA direto CZ008 para espera.		LNAV/VNAV DA / (OCH): 954' / (318')	
Missed APCH: Climb to 3000'. Maintain heading 280 until 2000'. After, turn RIGHT direct to CZ008 for holding.			

RMK: NIL.



RWY28	0.8	1.4	2.0	3.0	4.0	CZ012	KT	090	110	130	150	170	190
ALT	954	1120	1323	1641	1960	2280	FPM	500	600	700	800	900	NA
(HGT)	318	490	687	1005	1324	1650	FAF-MAPT	NA					

STRAIGHT-IN	CAT	A	B	C	D	E	
	DA / (OCH)	954' / (318')					NA
LNAV/VNAV	ALS/NO ALS/ RVR ALS (m)	NIL / 1400 / NIL					
	MDA / (OCH)	1120' / (490')					
LNAV	ALS/NO ALS/ RVR ALS (m)	NIL / 1600 / NIL			NIL / 2300 / NIL		
	CIRCLING	MDA / (OCH)	NA				
VIS (m)							

CHANGES: BRG. TAA VAR.