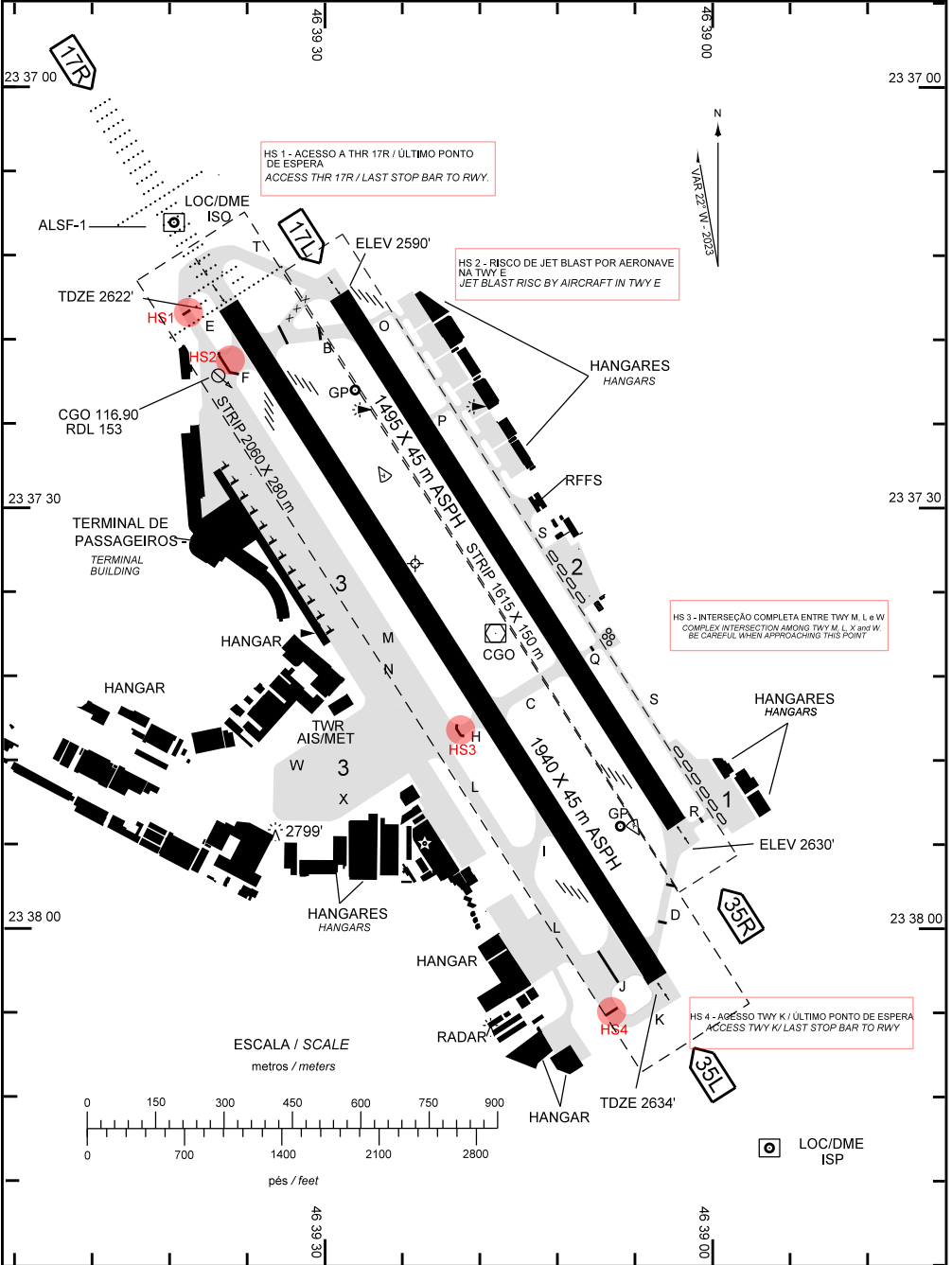


AD ELEV: 2631'

ARP S23 37 34 W046 39 23

D-ATIS 127.65	DCL 120.60	GNDC 121.90	TWR 118.05 127.15	APRON NIL
------------------	---------------	----------------	----------------------	--------------



CHANGES: COORD THR

ADC - SBSP: INFORMAÇÕES COMPLEMENTARES / COMPLEMENTARY INFORMATION

CARACTERÍSTICAS FÍSICAS / PHYSICAL CHARACTERISTICS											
PISTA RUNWAY				DIMENSÕES(m) DIMENSIONS(m)				PCN	TIPO DE SUPERFÍCIE SURFACE KIND		
RWY	BRG MAG	Tipo Type	RCD	RWY	SWY	CWY	STRIP	RWY	RWY	SWY	
a	b	c	d	e	f	g	h	i	j	k	
17R	169	PA-1	4C	1940X45			2060 X 280	50/F/B/X/T	ASPH		
35L	349	PA-1	4C								
17L	169	NPA	4C	1495X45			1615 X 150	38/F/B/X/U	ASPH		
35R	349	NPA	4C								

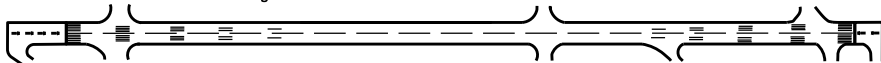
**DISTÂNCIAS DECLARADAS, AUXÍLIOS VISUAIS E COORDENADAS DAS CABECEIRAS
DECLARED DISTANCES, VISUAL AIDS AND THRESHOLD COORDINATES**

RWY	TORA(m)	TODA(m)	ASDA(m)	LDA(m)	AUXÍLIOS / AIDS		ALTURA GEOIDAL(m) GEOD HEIGHT(m)	COORDENADAS COORDINATES
17R	1790	1940	1790	1660	PAPI (2,87°)	ALSF-1	- 2.22	S23 37 15 W046 39 38
35L	1790	1940	1790	1660	PAPI		- 2.23	S23 38 03 W046 39 04
17L	1345	1345	1345	1195	PAPI		- 2.22	S23 37 15 W046 39 29
35R	1345	1345	1345	1195	PAPI		- 2.23	S23 37 52 W046 39 03

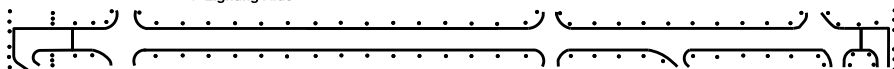
SERVIÇO DE SALVAMENTO E CONTRAINCÊNDIO / RESCUE AND FIRE FIGHTING SERVICE: RFFS REQ - 7

RWY 17R / 35L

Sinalização horizontal / Marking Aids

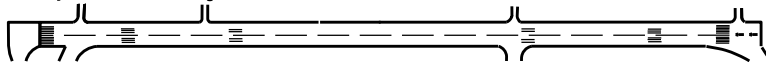


Auxílios luminosos / Lighting Aids

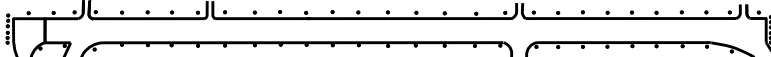


RWY 17L / 35R

Sinalização horizontal / Marking Aids



Auxílios luminosos / Lighting Aids



RMK: 1) MEHT: PAPI - RWY 17R - 66FT
RWY 35L - 61FT
RWY 17L - 45FT
RWY 35R - 47FT

2) PONTO DE TOQUE DO ILS/DME ISO E PAPI RWY 35L NÃO COINCIDENTES E AFASTADOS 83M.
TOUCHDOWN FOR ILS/DME ISO AND PAPI RWY 35L DO NOT COINCIDE AND ARE 83-M APART.

CHANGES: COORD THR