

**INSTRUMENT APPROACH
CHART (IAC)**

RIO DE JANEIRO / Campo Nero Moura, MIL (SBSC)

**USO EXCLUSIVO ACFT MILITARES
MILITARY ACFT ONLY**

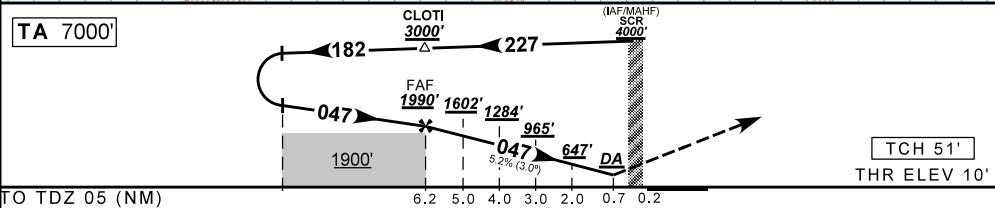
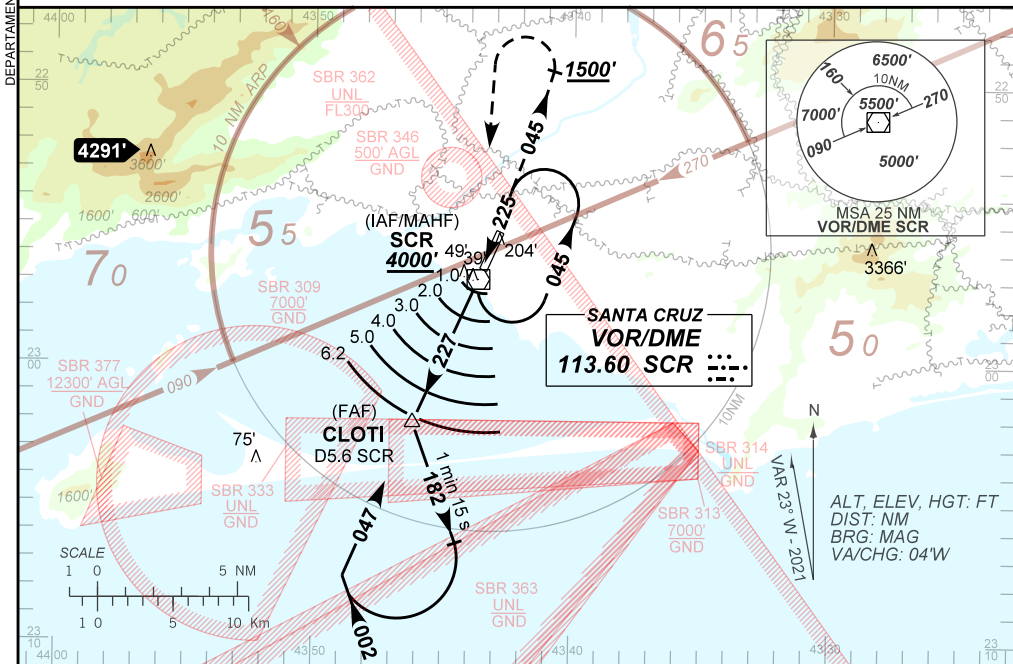
PAR X RWY 05

AD ELEV: 10'

ATIS NIL	133.70 132.50	APP RIO 134.40 121.25 119.00	PAR SANTA CRUZ 132.20	TWR SANTA CRUZ 118.80 122.90	GNDC SANTA CRUZ 121.80
VOR SCR 113.60 MHz	FINAL CRS 047°	FAF: 1990'	PAR DA / (OCH): 210' / (200')	N/A	

APCH Perdida: 1) Subir para **4000'**. Manter a proa **045** até passar **1500'**. Após, curvar à ESQUERDA direto VOR SCR para espera. 2) IAS MAX 240KT.

Missed APCH: 1) Climb to **4000'**. Maintain heading **045** until passing **1500'**. Then, turn LEFT direct SCR VOR for holding. 2) IAS MAX 240KT.



CLOTI	5.0	4.0	3.0	2.0	0.7	TDZ 05	Ground Speed (KT)	90	110	130	150	170	190
	1990	1602	1284	965	647	210	FPM	500	600	700	800	900	1000
	1980	1592	1274	955	637	200	FAF-MAPT	NA					

STRAIGHT-IN	CAT	A	B	C	D	E
	DA / (OCH)	210' / (200')				
PAR	ALS/NO ALS/ RVR ALS (m)	NIL / 1200 / NIL				
	MDA / (OCH)	NA				
CIRCLING	VIS (m)	NA				

AIRAC AMDT 2402A1 22 FEB 24

SBSC_IAC_01B 1/1

USO EXCLUSIVO ACFT MILITARES / MILITARY ACFT ONLY

IAC PAR X RWY 05

CHANGES: EAC. IDENT. LAYOUT.

DEPARTAMENTO DE CONTROLE DO ESPAÇO AEREO