

STANDARD DEPARTURE CHART
INSTRUMENT (SID)

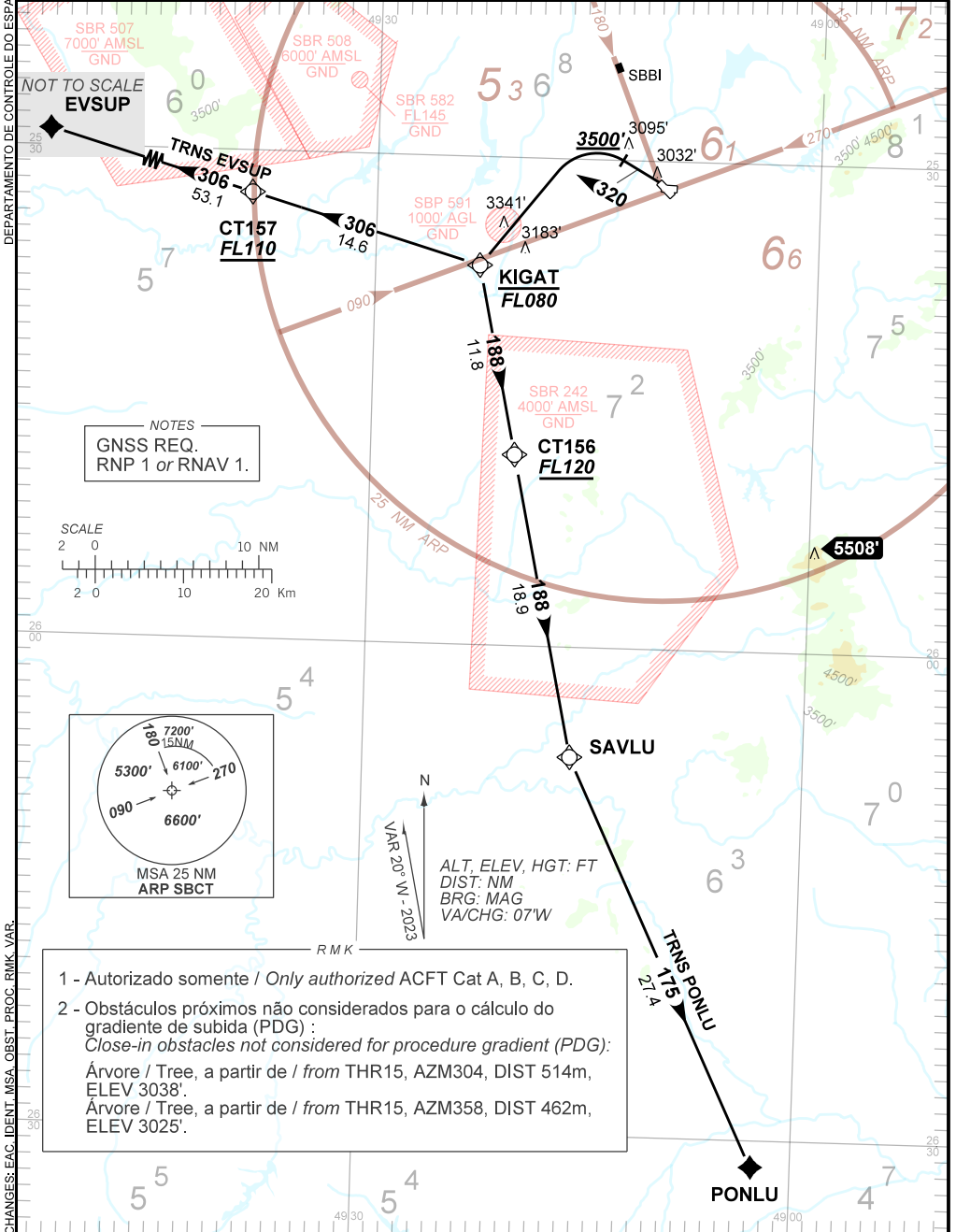
CURITIBA / Afonso Pena, INTL(SBCT)

RWY 33

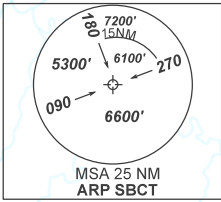
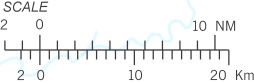
RNAV KIGAT 1B

AD ELEV: 2989'

TA 9000'	D-ATIS 127.80	TWR CURITIBA 118.15	APP CURITIBA 119.70 119.95 120.65 120.95 129.55 133.15	ACC CURITIBA 124.775 135.00 127.20 125.80
----------	------------------	------------------------	--	---



NOTES
GNSS REQ.
RNP 1 or RNAV 1.



N
VAR 20° W - 2023

ALT, ELEV, HGT: FT
DIST: NM
BRG: MAG
VA/CHG: 07W

- 1 - Autorizado somente / Only authorized ACFT Cat A, B, C, D.
- 2 - Obstáculos próximos não considerados para o cálculo do gradiente de subida (PDG) :
Close-in obstacles not considered for procedure gradient (PDG):
Árvore / Tree, a partir de / from THR15, AZM304, DIST 514m, ELEV 3038'.
Árvore / Tree, a partir de / from THR15, AZM358, DIST 462m, ELEV 3025'.

CHANGES: EAC, IDENT, MSA, OBST, PROC, RIMK, VAR.