

**INSTRUMENT APPROACH  
CHART (IAC)**

**CAMPINAS / Viracopos, INTL (SBKP)**

**AD ELEV: 2170'**

**RNP X RWY 15 (AR)**

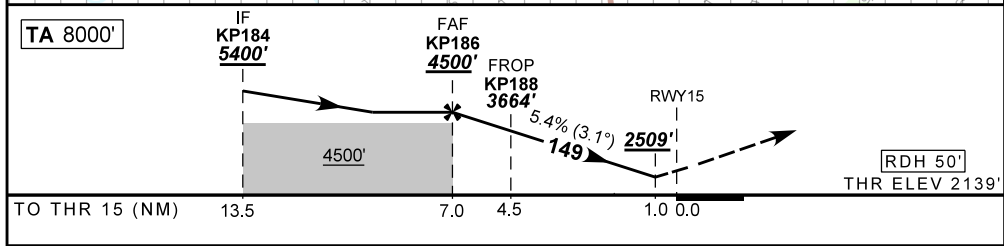
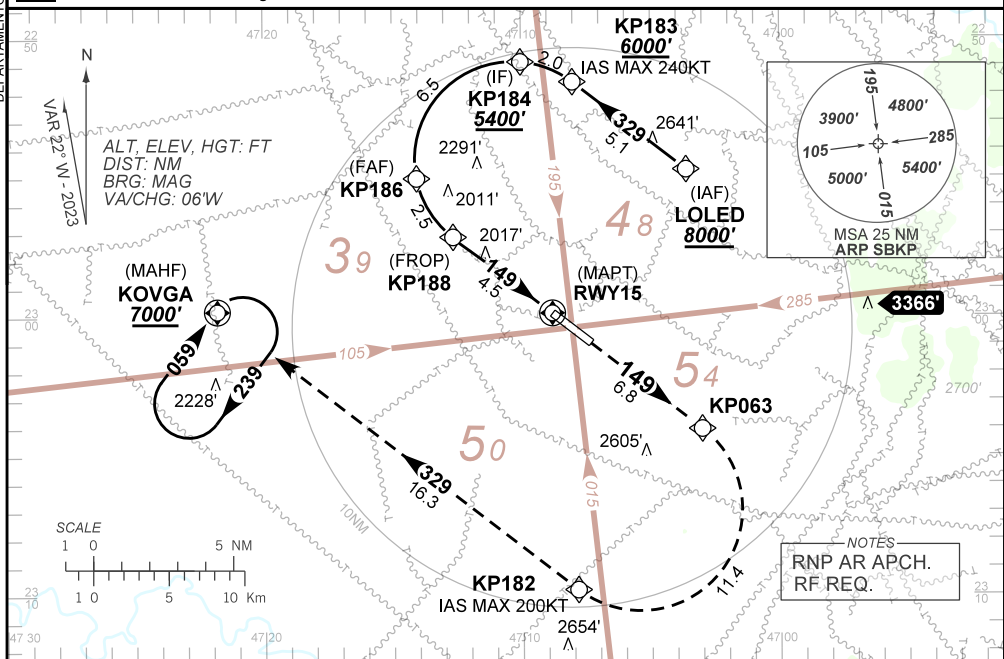
D-ATIS <b>127.825</b>	APP SÃO PAULO <b>119.05 119.15 119.25 119.60 119.80 120.05 120.25 120.45 120.85 121.40 122.75 123.25 124.15</b>	TWR CAMPINAS <b>118.25</b>	GNDC CAMPINAS <b>121.90</b>
--------------------------	--	-------------------------------	--------------------------------

TEMP LNAV/VNAV <b>MIN -10°C / MAX 45°C</b>	FINAL CRS <b>149°</b>	FAF: <b>4500'</b>	RNP 0.3 DA / (OCH): <b>2509' / (370')</b>	<b>N/A</b>
---	--------------------------	----------------------	--	------------

APCH Perdida: 1) Subir para **7000'**. Manter rumo **149** até KP063. Após, curvar à DIREITA até KP182. Após, rumo **329** até KOVGA para espera.

Missed APCH: 1) Climb to **7000'**. Maintain course **149** until KP063. After, turn RIGHT until KP182. After, course **329** until KOVGA for holding.

DEPARTAMENTO DE CONTROLE DO ESPAÇO AÉREO



KP186	5.0	KP188	3.0	2.0	1.0	RWY15	Ground Speed (KT)	090	110	130	150	170	190
4500	3835	3664	3176	2847	2509	ALT	FPM	500	600	700	800	900	NA
2361	1696	1525	1037	708	370	(HGT)	FAF-MAPT	NA					

STRAIGHT-IN	CAT	A	B	C	D	E	
	DA / (OCH)	2509' / (370')					NA
RNP 0.3	ALS/NO ALS/ RVR ALS (m)	1000 / 1700 / NIL					

**AUTORIZAÇÃO ESPECIAL PARA AERONAVE E TRIPULAÇÃO REQUERIDA  
SPECIAL AUTHORIZATION FOR AIRCRAFT AND CREW REQUIRED**

CHANGES: LAYOUT, PROC. VAR.